

BE

# POWER SMART

THINK ELECTRICAL

All Prices are VAT inclusive and are subject to availability. Valid from 1 April - 30 June 2025. While stocks last E&OE.

## BE SMART WITH LED LIGHTING



### MAGNETIC LED MODULE

**CP-FD-12/18/24W-CCT R139<sup>00</sup>**

Power Adjustable: 12/18/24W  
100lm/W | Ø170mm

**CP-FD-24/30/36W-CCT R199<sup>00</sup>**

Power Adjustable: 24/30/36W  
100lm/W | Ø223mm

\*Add Colour to Code: DL (Daylight), CW (Cool White), WW (Warm White)

### LED BULKHEADS

- Ideal for Coastal Regions

**LED-BLIA-C-10W-CCT**

**3 CCT ADJUSTABLE**

**R189<sup>00</sup>** 10W | 900lm  
Ø211 x 55mm

WW-3000K CW-4200K DL-6000K

**BL220-20W-WH-CCT**

**3 CCT ADJUSTABLE**

**R199<sup>00</sup>** 20W | 1800lm  
Ø220 x 80mm

WW-3000K CW-4000K DL-6000K

### WITH PIR MOTION SENSING

**BLO220-15W-PIR-BK-CCT**

**3 CCT ADJUSTABLE**

**R249<sup>00</sup>** 15W | 1350lm  
220 x 106 x 60mm

WW-3000K CW-4000K DL-6000K

**BL220-20W-PIR-BK-CCT**

**3 CCT ADJUSTABLE**

**R279<sup>00</sup>** 20W | 1800lm  
Ø220 x 80mm

WW-3000K CW-4000K DL-6000K

### RECESSED LED DOWNLIGHTS



**RW-RN120-6W-\***

**R49<sup>00</sup>**

6W | 390lm  
Ø118mm

**RW-RN150-9W-\***

**R59<sup>00</sup>**

9W | 630lm  
Ø145mm

**RW-RN170-12W-\***

**R69<sup>00</sup>**

12W | 900lm  
Ø175mm

**RW-RN200-18W-\***

**R89<sup>00</sup>**

18W | 1530lm  
Ø222mm

\*Add Colour to Code: DL (Daylight), CW (Cool White), WW (Warm White)

**LED-A60-5W-\*/2 R20<sup>00</sup>**

5W | 450lm | 270° Beam Angle

**LED-A60-7W-\*/2 R24<sup>00</sup>**

7W | 540lm | 270° Beam Angle

\*Add Colour to Code:

DL (Daylight), CW (Cool White), WW (Warm White)

\*Add Base to Code: E27 | B22



### LED GU10 LAMPS

**LED-GU10-6W-\*/5 5 PACK**

**R49<sup>00</sup>**

6W | 480lm | 5 Pack  
120° Beam Angle

\*Add Colour to Code:

DL (Daylight), CW (Cool White), WW (Warm White)



**R15<sup>00</sup>**

**GU10-3528-60-\***

3W | 380lm | 120°

\*Add Colour to Code: DL (Daylight), CW (Cool White), WW (Warm White)



### LED FLOODLIGHTS

**PR225TG-30W-CCT**

30W | 2400lm  
150 x 170 x 50mm

**R259<sup>00</sup>**

**3 CCT ADJUSTABLE**

WW-3000K CW-4000K DL-6000K

**R319<sup>00</sup>**

**PR225TG-50W-CCT**

50W | 4000lm | 185 x 190 x 50mm



### LED BACKLIT PANELS

**DFL-P0606-40W-CCT**

**R399<sup>00</sup>**

40W | 4400lm | 595 x 595 x 30mm

**DFL-P1203-40W-CCT**

**R439<sup>00</sup>**

40W | 4040lm | 1195 x 295 x 30mm

**DFL-P1206-64W-CCT**

**R829<sup>00</sup>**

64W | 7040lm | 1195 x 595 x 30mm



**5 YEAR warranty**

**3 CCT ADJUSTABLE**

WW-4200K CW-5000K DL-6500K

[acdc.co.za](http://acdc.co.za)

NATIONAL CALL CENTRE: Sales 010 202 3400 | Technical 010 202 3500 | Solar Hot Line 010 045 8002



HEAD OFFICE - LONGMEADOW:  
info@acdc.co.za | 010 202 3300  
26 Nguni Drive, Longmeadow  
Business Estate, Edenvale

OTHER BRANCHES:  
GERMISTON: 011 418 9600 PTN: 031 700 4215  
CPT: 021 492 2000 RVH: 031 492 4800



Visit our Website

BQ-RN-9W-\*    BQ-RN-18W-\*    BQ-RN-24W-\*    BQ-RN-36W-\*

**R25<sup>00</sup>**

9W | 800lm  
Ø90mm

**R35<sup>00</sup>**

18W | 1620lm  
Ø120mm

**R55<sup>00</sup>**

24W | 3240lm  
Ø170mm

**R89<sup>00</sup>**

36W | 3240lm  
Ø220mm

BQ-SQ-9W-\*    BQ-SQ-18W-\*    BQ-SQ-24W-\*    BQ-SQ-36W-\*

**R29<sup>00</sup>**

9W | 810lm  
90 x 90mm

**R39<sup>00</sup>**

18W | 1620lm  
120 x 120mm

**R59<sup>00</sup>**

24W | 2160lm  
170 x 170mm

**R99<sup>00</sup>**

36W | 3240lm  
220 x 220mm

**RECESSED LED DOWNLIGHTS**



\*Add Colour to Code: DL (Daylight), CW (Cool White), WW (Warm White)

**LED HIGH POWER LAMPS – E40 | Daylight**



OPTIC: 90° LENS

RW-RS1-L-65-DL

**R499<sup>00</sup>**

65W | 8450lm  
Ø200 x 238mm

RW-RS1-L-100-DL

**R629<sup>00</sup>**

100W | 13000lm  
Ø200 x 238mm

RW-RS1-L-150-DL

**R729<sup>00</sup>**

150W | 19500lm  
Ø200 x 238mm

**5 YEAR**  
warranty

130 LM/W

OPTIC: DIFFUSER



RW-RS1-D-65-DL

**R499<sup>00</sup>**

65W | 8450lm  
Ø200 x 275mm

RW-RS1-D-100-DL

**R629<sup>00</sup>**

100W | 13000lm  
Ø200 x 275mm

RW-RS1-D-150-DL

**R729<sup>00</sup>**

150W | 19500lm  
Ø200 x 275mm

**LED ECONOMICAL FLOODLIGHTS**

230VAC | Beam Angle: 120° | Cool White



**2 YEAR**  
warranty

FL-10W-CW

**R49<sup>00</sup>**

10W | 800lm

FL-20W-CW

**R79<sup>00</sup>**

20W | 1600lm

FL-30W-CW

**R109<sup>00</sup>**

30W | 2400lm

FL-50W-CW

**R149<sup>00</sup>**

50W | 4000lm

FL-100W-CW

**R259<sup>00</sup>**

100W | 8000lm

FL-150W-CW

**R429<sup>00</sup>**

150W | 12000lm

FL-200W-CW

**R529<sup>00</sup>**

200W | 16000lm

FL-400W-CW

**R1,299<sup>00</sup>**

400W | 32000lm

**UFO TYPE LED HIGHBAYS**



**IP65**

**3 YEAR**  
warranty

GY630-100-\*

**R699<sup>00</sup>**

100W | 15000lm  
Ø247 x 90mm

GY630-150-\*

**R899<sup>00</sup>**

150W | 22500lm  
Ø256 x 90mm

GY630-200-\*

**R1,169<sup>00</sup>**

200W | 30000lm  
Ø270 x 95mm

**LED FLOODLIGHTS**



**IP65**

Daylight  
Low Profile

BK02-10W-DL

**R75<sup>00</sup>**

10W | 1000lm  
107 x 84 x 16mm

BK02-20W-DL

**R125<sup>00</sup>**

20W | 2000lm  
101 x 141 x 18mm

\*Add Colour to Code: DL (Daylight), CW (Cool White)

**T8 LED WEATHERPROOF FITTINGS IP65**

C/W  
FUSE  
LINKS



LED-YZ-T8-2X18W-NT

**R299<sup>00</sup>**

2 x 18W | 4FT  
1278 x 129 x 90mm

LED-YZ-T8-2X22W-NT

**R389<sup>00</sup>**

2 x 22W | 5FT  
1578 x 129 x 90mm



BW-ECO-18

**R186<sup>00</sup>**

18W | 1500lm  
590 x 86 x 66mm

BW-ECO-36

**R369<sup>00</sup>**

36W | 3000lm  
1180 x 86 x 66mm

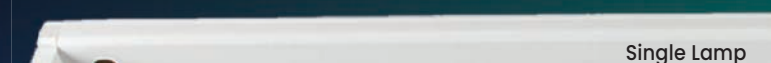
BW-ECO-48

**R429<sup>00</sup>**

48W | 4000lm  
1480 x 86 x 66mm

**BE ILLUMINATED WITH LED FITTINGS & TUBES**

PREWIRED FOR LED



Single Lamp

OS-LED-006

**R35<sup>00</sup>**

9W (2FT)  
610 x 33 x 15mm

OS-LED-012

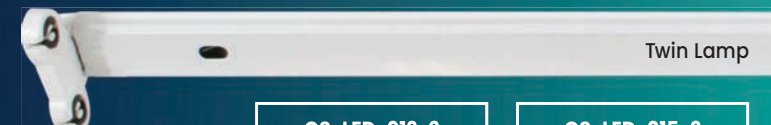
**R49<sup>00</sup>**

18W (4FT)  
1210 x 33 x 15mm

OS-LED-015

**R59<sup>00</sup>**

22W (5FT)  
1546 x 33 x 15mm



Twin Lamp

OS-LED-012-2

**R59<sup>00</sup>**

18W (4FT)  
1210 x 33 x 15mm

OS-LED-015-2

**R69<sup>00</sup>**

22W (5FT)  
1546 x 33 x 15mm

Ø26.3MM



FROSTED

LEDT8-A2FR-\*

**R23<sup>00</sup>**

9W | 2FT | T8  
Ø26.3mm

LEDT8-A4FR-\*

**R29<sup>00</sup>**

18W | 4FT | T8  
Ø26.3mm

LEDT8-A5FR-\*

**R39<sup>00</sup>**

22W | 5FT | T8  
Ø26.3mm

\*Add Colour to Code:  
DL (Daylight),  
CW (Cool White)



Due to our policy of continuous improvement we reserve the right of modifying specifications and appearance. All Prices are VAT inclusive and are subject to availability. Valid from 1 April - 30 June 2025 - while stocks last | E&OE. Images may vary from actual products. All electrical products should be installed by a qualified technician.

# DECORATE WITH LED DESK LAMPS

USB RECHARGEABLE

DL-YD007-BK Black **R279<sup>00</sup>**

DL-YD007-GLD Gold **R299<sup>00</sup>**

2 CCT ADJUSTABLE

WW - 1800K DL - 5000K



RECHARGEABLE

MYT10392-1-**R429<sup>00</sup>**

3 CCT ADJUSTABLE

WW - 3000K CW - 4000K DL - 5000K

\*Add Colour to Code:  
WH (White), BK (Black), GLD (Gold)



T5 LED LIGHTS **IP20**

USB RECHARGEABLE

Magnetic Mounting Kit Incl.

JCL-T5-901-4W 4W LED | 400lm | 320 x 40 x 23mm **R89<sup>00</sup>**

JCL-T5-901-6W 6W LED | 600lm | 540 x 40 x 23mm **R129<sup>00</sup>**

LED LANTERN/TORCH

USB RECHARGEABLE

3W | 300lm | 400mAh Battery  
8-10hrs Run Time  
Colour Temp: 6000K

CS2008GR

**R159<sup>00</sup>**



LED LANTERN

DIMMABLE

USB RECHARGEABLE

3 CCT ADJUSTABLE

WW-3000K CW-4000K DL-5000K

RW-DL-2

**R339<sup>00</sup>**



# ALWAYS SHINE WITH EMERGENCY LIGHTING

<p><b>30 LED</b></p> <p><b>IP40</b></p> <p>RWELEDJ-2</p> <p><b>R199<sup>00</sup></b></p> <p>40/80lm Low 6hrs / High 3hrs</p>	<p><b>30 LED</b></p> <p><b>IP40</b></p> <p>NS350LX</p> <p><b>R99<sup>00</sup></b></p> <p>350lm   4hrs</p>	<p><b>60 LED</b></p> <p><b>IP40</b></p> <p>NS650LX</p> <p><b>R199<sup>00</sup></b></p> <p>270lm   4hrs</p>	<p><b>66 LED</b></p> <p><b>IP40</b></p> <p>AL-2166</p> <p><b>R169<sup>00</sup></b></p> <p>360lm Max power 1.5hrs / Low power 10hrs</p>	<p><b>60 LED</b></p> <p><b>IP20</b></p> <p>AL-3600</p> <p><b>R199<sup>00</sup></b></p> <p>360lm Low 4hrs / High 2hrs</p>	<p><b>60 LED</b></p> <p><b>IP40</b></p> <p>AL-2060</p> <p><b>R239<sup>00</sup></b></p> <p>400/200lm Low 8hrs / High 4hrs</p>	<p><b>60 LED</b></p> <p><b>IP40</b></p> <p>LED008</p> <p><b>R199<sup>00</sup></b></p> <p>98+220lm   8hrs Single LED / 4hrs Multiple LED</p>
----------------------------------------------------------------------------------------------------------------------------------	-----------------------------------------------------------------------------------------------------------	------------------------------------------------------------------------------------------------------------	------------------------------------------------------------------------------------------------------------------------------------------------	------------------------------------------------------------------------------------------------------------------------------	----------------------------------------------------------------------------------------------------------------------------------	-----------------------------------------------------------------------------------------------------------------------------------------------------

**DC WORK LIGHT**

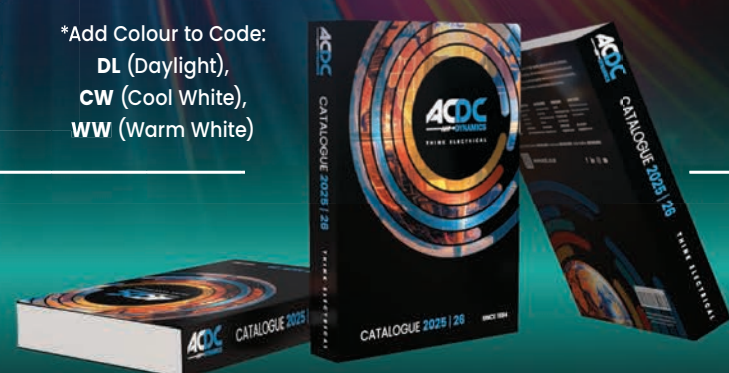
WL10621-30

**R1,929<sup>00</sup>**

30W | 105lm/W  
18.5V 4400mAh | Li-ion Battery  
Ø670 x 1126mm (open)  
6500K Daylight

<p><b>DIMMABLE</b></p> <p><b>LED EMERGENCY A60 LAMPS</b></p> <p>EMG-DIM-A60-7W-* <b>R69<sup>00</sup></b> 7W   650lm Ø60 x 120mm</p> <p>EMG-DIM-A60-9W-* <b>R79<sup>00</sup></b> 9W   880lm Ø65 x 133mm</p> <p>EMG-DIM-A60-11W-* <b>R89<sup>00</sup></b> 11W   1100lm Ø70 x 145mm</p> <p>3-STEP DIMMING to extend battery life in emergency mode</p> <p>300lm: ± 2 Hrs   120lm: ± 4 Hrs   50lm: ± 7 Hrs Approximate working time if fully charged</p> <p>*Add Colour to Code: DL (Daylight), CW (Cool White)</p>	<p><b>DIMMABLE</b></p> <p><b>LED EMERGENCY GU10 LAMPS</b></p> <p>EMG-DIM-GU10-7W-* <b>R75<sup>00</sup></b> 7W   Normal: 450lm</p> <p>EMG-GU10-3W-* <b>R35<sup>00</sup></b> 3W   Normal: 190lm   Emg: 85lm</p> <p>EMG-GU10-5W-* <b>R69<sup>00</sup></b> 5W   Normal: 350lm   Emg: 120lm</p> <p>3-STEP DIMMING to extend battery life in emergency mode</p> <p>135lm: ± 2.5 Hrs   60lm: ± 5 Hrs   24lm: ± 7 Hrs Approximate working time if fully charged</p> <p>*Add Colour to Code: DL (Daylight), CW (Cool White)</p>
<p><b>NON-DIMMABLE</b></p> <p>EMG-A60-5W-* <b>R55<sup>00</sup></b> 5W   375/250lm 60 x 108mm</p> <p>EMG-A60-9W-* <b>R69<sup>00</sup></b> 9W   675/300lm 60 x 108mm</p> <p>EMG-A60-12W-* <b>R99<sup>00</sup></b> 12W   900/350lm 80 x 170mm</p> <p>*Add Colour to Code: DL (Daylight), CW (Cool White)</p>	<p><b>NON-DIMMABLE</b></p> <p>EMG-GU10-3W-* <b>R35<sup>00</sup></b> 3W   Normal: 190lm   Emg: 85lm</p> <p>EMG-GU10-5W-* <b>R69<sup>00</sup></b> 5W   Normal: 350lm   Emg: 120lm</p> <p>*Add Colour to Code: DL (Daylight), CW (Cool White), WW (Warm White)</p>

THE WAIT IS OVER... **DISCOVER THE HEART OF INNOVATION**



# STAY LIT WITH SOLAR LIGHTING

**GARDEN SPIKE**  
**IP44**  
TS-G0206-CW  
**R189<sup>00</sup>**  
Ni-Mh 1.2V 1200mAh  
2W | 180lm

**PILLAR LIGHT**  
**IP65**  
TS-S5306-CCT  
**R299<sup>00</sup>**  
Lithium 3.7V 2000mAh  
2W/30lm  
CCT Adjustable  
WW ↔ CW ↔ DL

**UNDERWATER LIGHT**  
TS-S4203-RGB  
**R529<sup>00</sup>**  
Lithium 3.7V 2000mAh | 3 x 1W  
RGB Colour Changing  
PV Panel **IP44** LED Lights **IP68**

**SOLAR WALL LIGHTS - PIR MOTION SENSING**  
SWL-JX001-60  
**R359<sup>00</sup>**  
Lithium 3.7V / 3000mAh  
6-8Hrs (Fully charged)  
4.5W / 420lm  
2.5W Polycrystalline  
**IP44**  
SWL-JX002-40  
**R269<sup>00</sup>**  
Lithium 3.7V / 1800mAh  
6-8Hrs (Fully charged)  
3.5W / 330lm  
1W Polycrystalline

**IP54 SOLAR CEILING LIGHT**  
RW-SCL-220  
**R399<sup>00</sup>**  
6W | 750lm | 6Ah 3.7V  
Kit Includes:  
Ceiling Light: Ø220mm  
Energy Box: 96x96x31mm  
Solar Panel: 6W,6V

**IP54 SOLAR CEILING LIGHTS**  
RW-SCL-300  
**R529<sup>00</sup>**  
9W | 1100 lm | 9Ah 3.7V  
Kit Includes:  
Ceiling Light: Ø300mm  
Energy Box: 120x120x31mm  
Solar Panel: 12W,6V

**IP54 SOLAR CEILING LIGHTS**  
RW-SCL-220/2  
**R669<sup>00</sup>**  
6W x 2 | 750 lm x 2  
12Ah 3.7V  
Kit Includes:  
Ceiling Lights: Ø220mm x 2  
Energy Box: 120x120x31mm  
Solar Panel: 15W,6V

**IP54 SOLAR STRIP LIGHTS**  
RW-SSL-5M  
**R339<sup>00</sup>**  
3W | 150 lm/5m | 2Ah 3.7V  
Kit Includes:  
Strip Light: 5m  
Energy Box: 78x78x28mm  
Solar Panel: 3W,6V

**SOLAR LINEAR LIGHTS** **IP54**  
RW-STL-0.6M/2  
**R759<sup>00</sup>**  
6W x 2 | 550lm x 2 | 12Ah 3.7V  
Kit Includes:  
Linear Light: Ø590mm x 2  
Energy Box: 120x120x31mm  
Solar Panel: 15W,6V

**SOLAR LED BULB LIGHTS** **IP54**  
RW-STRING-5M  
**R339<sup>00</sup>**  
3W | 10lm x 10 | 2Ah 3.7V  
Kit Includes:  
String Light: 5m (10 LED bulbs)  
Energy Box: 78x78x28mm  
Solar Panel: 3W,6V

**ECO FLOOD LIGHTS WITH REMOTE CONTROL** **IP65**

TK-03-20W <b>R479<sup>00</sup></b> 3.2V/5Ah Battery 20W / 400lm 6W PV Panel	TK-03-60W <b>R699<sup>00</sup></b> 3.2V/10Ah Battery 60W / 800lm 10W PV Panel	TK-03-100W <b>R949<sup>00</sup></b> 3.2V/15Ah Battery 100W / 1200lm 15W PV Panel	TK-03-200W <b>R1,289<sup>00</sup></b> 3.2V/20Ah Battery 200W / 1800lm 20W PV Panel	TK-03-300W <b>R1,999<sup>00</sup></b> 3.2V/40Ah Battery 300W / 3200lm 40W PV Panel
-----------------------------------------------------------------------------------------	-------------------------------------------------------------------------------------------	----------------------------------------------------------------------------------------------	------------------------------------------------------------------------------------------------	------------------------------------------------------------------------------------------------

**SOLAR STREET LIGHTING**  
Pole not included **IP65**

ST-S20 <b>R469<sup>00</sup></b> 20W   360lm 7W PV Panel 3.2V / 5Ah Battery	ST-S40 <b>R599<sup>00</sup></b> 40W   750lm 8W PV Panel 3.2V / 5Ah Battery	ST-S60 <b>R699<sup>00</sup></b> 60W   1350lm 12W PV Panel 3.2V / 12Ah Battery	ST-S90 <b>R769<sup>00</sup></b> 90W   1850lm 18W PV Panel 3.2V / 18Ah Battery	ST-S120 <b>R1,079<sup>00</sup></b> 120W   2400lm 18W PV Panel 3.2V / 22Ah Battery
----------------------------------------------------------------------------------------	----------------------------------------------------------------------------------------	-------------------------------------------------------------------------------------------	-------------------------------------------------------------------------------------------	-----------------------------------------------------------------------------------------------

**SOLAR LED FLOOD LIGHTS - PIR MOTION SENSING**

SFL203 <b>R399<sup>00</sup></b> 16W / 1600lm Lithium 3.7V / 3000mAh Charging: Up to 10hrs	SFL-S3W <b>R529<sup>00</sup></b> 25W / 2500lm Up to 10Hrs (Fully charged) Replaceable Battery	LD-SSL-8W <b>R549<sup>00</sup></b> 8W / 950lm Multiple Mounting Options 2 Working Modes
-------------------------------------------------------------------------------------------------------	-----------------------------------------------------------------------------------------------------------	-----------------------------------------------------------------------------------------------------

**SOLAR CAMPING LIGHT**  
RW-SCL-20  
**R299<sup>00</sup>**  
High 2hrs / Low 6hrs  
1W/80lm | 3W/210lm  
USB-A to USB-C cable (300mm)



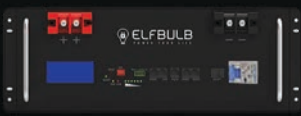
Due to our policy of continuous improvement we reserve the right of modifying specifications and appearance. All Prices are VAT inclusive and are subject to availability. Valid from 1 April - 30 June 2025 - while stocks last | E&OE. Images may vary from actual products. All electrical products should be installed by a qualified technician.

## LITHIUM BATTERIES



Up to 8000 cycles @ 80% DoD (0,5C)

10 YEAR warranty



1C Rack Mount

ELF52V-100-5.12K-RM

**R21,999<sup>00</sup>**

51.2V | 5120Wh | 100Ah  
Max. Discharge: 100A



1C Wall Mount

ELF52V-100-5.12K-WM

**R21,999<sup>00</sup>**

51.2V | 5120kWh | 100Ah  
Max. Discharge: 100A



1C Wall Mount

ELF52V-200-10K-WM

**R43,769<sup>00</sup>**

51.2V | 10240Wh | 200Ah  
Max. Discharge: 200A



Up to 6000 cycles @ 80% DoD (0,5C)

5 YEAR warranty



1C Rack Mount

RESI-51100RM-5.1KWH

**R21,219<sup>00</sup>**

51.2V | 5120Wh | 100Ah  
Max. Discharge: 100A



1C Wall Mount

RESI-51100WM-5.1KWH

**R22,369<sup>00</sup>**

51.2V | 5120Wh | 100Ah  
Max. Discharge: 100A



Up to 6200 cycles @ 80% DoD (0,5C)

5 YEAR warranty



Rack Mount

LFP26V-100-2.5K-RM

**R10,449<sup>00</sup>**

25.6V | 2560Wh | 100Ah  
Max. Discharge: 100A



Wall Mount

LFP26V-100-2.5K-WM

**R10,449<sup>00</sup>**

25.6V | 2560Wh | 100Ah  
Max. Discharge: 100A



Up to 6200 cycles @ 80% DoD (0,5C)

5 YEAR warranty



Rack Mount

LFP52V-100-5.2K-RM

**R17,639<sup>00</sup>**

51.2V | 5120Wh | 100Ah  
Max. Discharge: 100A



Wall Mount

LFP52V-100-5.2K-WM

**R17,489<sup>00</sup>**

51.2V | 5120Wh | 100Ah  
Max. Discharge: 100A



Wall Mount

LFP52V-200-10K-FS

**R34,999<sup>00</sup>**

51.2V | 10240Wh | 200Ah  
Max. Discharge: 150A

## LIFEPO4 BATTERIES

10 YEAR warranty

1C



DEYE-SE52V-G5.3KWH

**R20,299<sup>00</sup>**

51.2V | 104Ah / 5.32KWh  
Max. Charge/Discharge: 100A  
Cycle: >6000 (0.3C/90%DOD)  
c/w Rack/Wall/Stacking Brackets

RACK OR WALL MOUNTING



DEYE-RW52V-M5.3K-WM

**R21,259<sup>00</sup>**

51.2V | 104Ah / 5.32KWh  
Max. Charge/Discharge: 100A  
Cycle: >6000 (0.5/1C / 90%DOD)

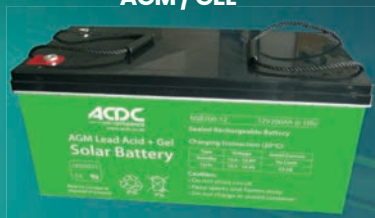
DEYE-RW52V-F10.6-WM

**R40,329<sup>00</sup>**

51.2V | 208Ah / 10.64KWh  
Max. Charge/Discharge: 250A  
Cycle: >6000 (0.5/1C / 90%DOD)

## LEAD-ACID BATTERIES

AGM / GEL



NSB065-12 **R2,399<sup>00</sup>**

12V | 65Ah | 350 x 167 x 183mm

NSB100-12 **R3,199<sup>00</sup>**

12V | 100Ah | 328 x 172 x 220mm

DEEP CYCLE / AGM

SY120102 **R2,819<sup>00</sup>**

12V | 102Ah | 331 x 173 x 218mm



SY120200 **R5,649<sup>00</sup>**

12V | 200Ah | 522 x 240 x 240mm



SEALED LEAD ACID

SY1270 **R219<sup>00</sup>**

12V | 7.2Ah | 150 x 65 x 102mm



Note: Lead-Acid Batteries are not well-suited for applications that require frequent cycling or deep discharge. Due to the current load shedding situation, there is no warranty on Lead-Acid Batteries.

## LIFEPO4 BATTERIES



SPF12-7.5

**R759<sup>00</sup>**

12.8V | 7.5Ah / 96Wh  
Max. Discharge: 20A



SPF12-8-HD

**R829<sup>00</sup>**

12.8V | 8Ah / 102.4Wh  
Max. Discharge: 24A



SPF12-100

**R5,499<sup>00</sup>**

12.8V | 100Ah / 1280Wh  
Max. Discharge: 100A

SPF12-200

**R12,799<sup>00</sup>**

12.8V | 200Ah / 2560Wh  
Max. Discharge: 200A

Heavy Duty for Gate Motors



High Performance, Ultra Safe LiFePO4 Technology

SPF26V-50

**R5,159<sup>00</sup>**

25.6V | 50Ah / 1280Wh  
Max. Discharge: 50A

SPF26V-200

**R23,799<sup>00</sup>**

25.6V | 200Ah / 5120Wh  
Max. Discharge: 150A

3 YEAR warranty

THE WAIT IS OVER... **DISCOVER THE HEART OF INNOVATION**



CATALOGUE 25 / 26



## HYBRID GRID-TIED INVERTERS

Parallel Capable | c/w Full Remote Monitoring & Control

10  
YEAR  
warranty

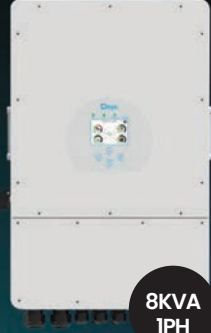


5KVA  
1PH

DEYE-H-5K 48VDC

**R17,799<sup>00</sup>**

5kVA | 48VDC | 1PH  
PV Input: 6500W Max  
2 x MPPT



8KVA  
1PH

DEYE-H-8K 48VDC

**R31,249<sup>00</sup>**

8kVA | 48VDC | 1PH  
PV Input: 10400W Max  
2 x MPPT



12KVA  
1PH

DEYE-H-12K 48VDC

**R43,599<sup>00</sup>**

12kVA | 48VDC | 1PH  
PV Input: 15600W Max  
3 x MPPT

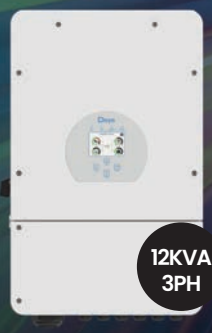


16KVA  
1PH

DEYE-H-16K 48VDC

**R56,549<sup>00</sup>**

16kVA | 48VDC | 1PH  
PV Input: 20800W Max  
3 x MPPT



12KVA  
3PH

DEYE-H-12K-3P 48VDC

**R45,689<sup>00</sup>**

12kVA | 48VDC | 3PH  
PV Input: 15600W Max  
2 x MPPT

## OFF-GRID INVERTERS

Pure Sine Wave | Combines the functions of Inverter, MPPT Solar Charger, AC Battery Charger, UPS



1  
YEAR  
warranty

Wall Mount

EM-5.5K 48VDC

**R5,599<sup>00</sup>**

5500W | 230VAC  
Lithium/Lead Acid Battery 48VDC  
BMS Communication (incl.)  
PV Input: 500VDC | Max. 5500W



Wall Mount

HP-5K 48VDC

**R8,399<sup>00</sup>**

5000W | 230VAC  
Lithium/Lead Acid Battery 48VDC  
BMS Communication (incl.)  
PV Input: 500VDC | Max. 5000W  
Parallel Capable



Rack Mount

RM-5.5K 48VDC

**R10,799<sup>00</sup>**

5500W | 230VAC  
Lithium/Lead Acid Battery 48VDC  
BMS Communication (incl.)  
PV Input: 500VDC | Max. 5500W  
Parallel Capable

1  
YEAR  
warranty

PV18-1K 12VDC

**R3,299<sup>00</sup>**

1KVA/1KW | 230VAC  
PV Input:  
625W/75V Max



Add PV18-WIFI for  
Remote Monitoring

+

3  
YEAR  
warranty



PV18-3K 24VDC

**R4,359<sup>00</sup>**

3KVA/3KW | 230VAC  
PV Input:  
1500W/145V Max



+

5  
YEAR  
warranty

PV18-5K 48VDC

**R8,229<sup>00</sup>**

5KVA/5KW | 230VAC  
PV Input:  
4000W/145V Max



+

SPF12-100

**R5,499<sup>00</sup>**

12.8V | 100Ah | 1280Wh  
Max. Discharge: 100A

LFP26V-100-2.5K-WM

**R10,449<sup>00</sup>**

25.6V | 2560Wh | 100Ah  
Max. Discharge: 100A

LFP52V-100-5.2K-WM

**R17,489<sup>00</sup>**

51.2V | 5120Wh | 100Ah  
Max. Discharge: 100A

**TOTAL = R8,798<sup>00</sup>**

**R14,808<sup>00</sup>**

**R25,718<sup>00</sup>**

## ISITEPOWER-M HYBRID SOLUTION



HUAWEI

10  
YEAR  
warranty



ISP-M-5K-5KWH

**R44,999<sup>00</sup>**

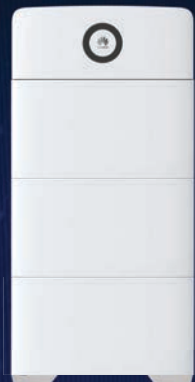
5kW 1PH Power Module &  
1x5kWh Battery Module  
Maximum Output Power  
in Backup Mode: 2500W



ISP-M-5K-10KWH

**R75,899<sup>00</sup>**

5kW 1PH Power  
Module & 2x5kWh  
Battery Modules



ISP-M-5K-15KWH

**R99,999<sup>00</sup>**

5kW 1PH Power  
Module & 3x5kWh  
Battery Modules

## ALL-IN-ONE INVERTER & BATTERIES

AIO-2KW-LITHIUM

**R20,799<sup>00</sup>**

Wall Mount

2000W | 230VAC  
2048Wh LiFePO4 Battery  
≥2000 cycles

5  
YEAR  
warranty

AIO-3KW-LITHIUM

**R23,999<sup>00</sup>**

3000W | 230VAC  
3072Wh LiFePO4 Battery  
≥2000 cycles



## ALL-IN-ONE BACKUP SOLUTION

LS-AIO-5K-5KWH

**R30,499<sup>00</sup>**

5000W | 230VAC  
5.12kWh @ 100Ah Lithium Battery  
PV Input: 3500W/450V Max  
BMS Communication (incl.)  
CAN/RS485/WIFI



INVERTER

3  
YEAR  
warranty

BATTERY

5  
YEAR  
warranty

## OFF-GRID



2  
YEAR  
warranty

XANADU-10K 48VDC

**R20,299<sup>00</sup>**

10kW | 230VAC | Dual AC Output  
Lithium or Lead Acid Battery | 48VDC  
BMS Communication (incl.)  
PV Input: 500VDC | Max. 12000W  
2 MPPT Trackers

## OFF-GRID & HYBRID INVERTERS HYBRID

- Lithium-ion/ Lead-Acid Battery 48VDC
- BMS Communication (incl.)
- c/w Full Remote Monitoring & Control



SE-H-6K 48VDC

**R21,419<sup>00</sup>**

6000W | 230VAC | 1PH  
PV Input: 550VDC | Max. 9000W



SE-H-10K 48VDC

**R35,999<sup>00</sup>**

10 000W | 230VAC | 1PH  
PV Input: 600VDC | Max. 15000W



Due to our policy of continuous improvement we reserve the right of modifying specifications and appearance. All Prices are VAT inclusive and are subject to availability. Valid from 1 April - 30 June 2025 - while stocks last | E&OE. Images may vary from actual products. All electrical products should be installed by a qualified technician.

## MOBILE BACK-UP UNITS WITH UPS FUNCTION



**NEW**

**PBU-300W-UPS**

**R3,699<sup>00</sup>**

300W | 230VAC  
280Wh Lithium Battery  
AC, USB & 12VDC Outlets  
Solar Input: 12-30V | 10A (110W)



**NEW**

**PBU-600W-UPS**

**R6,349<sup>00</sup>**

600W | 230VAC  
560Wh Lithium Battery  
AC, USB & 12VDC Outlets  
Solar Input: 12-30V | 5A (200W)



**PBU-1000W-UPS**

**R10,729<sup>00</sup>**

1000W | 230VAC | 999Wh  
Lithium Battery | AC, USB &  
12VDC Outlets | Built-in LED Light  
Solar Input: 12-30V | 400W Max

**NEW**



**PBU-1500W-UPS**

**R16,079<sup>00</sup>**

1500W | 230VAC  
1440Wh Lithium Battery

AC, USB & 12VDC Outlets  
Solar Input: 10-50V | 12A (400W)

**PBU-2000W-UPS**

**R18,979<sup>00</sup>**

2000W | 230VAC  
2160Wh Lithium Battery

**BLUETTI**



Built-in LED & Remote  
Monitoring App

**BP-EB3A**

**R4,399<sup>00</sup>**

600W | 230VAC  
268Wh Lithium Battery  
AC, USB & 12VDC Outlets  
Solar Input: 12-28V | 200W Max

**NEW**



**RS-500W-UPS**

**R6,799<sup>00</sup>**

500W | 230VAC  
384Wh LiFePO4 Battery  
AC, USB & 12VDC Outlets

## PORTABLE POWER STATIONS



**DP1000iL**

**R21,999<sup>00</sup>**

1000W | 230VAC  
12VDC | 2048Wh  
530 x 320 x 460mm  
2x 3-pin SA

## INVERTER TROLLEYS

**BTR-1K 12VDC**

**R5,999<sup>00</sup>**

1000VA | 600W | 230VAC  
12VDC (Excl Batteries)

**BTR-2K 24VDC**

**R6,899<sup>00</sup>**

2000VA | 1200W | 230VAC  
24VDC (Excl Batteries)

3-Pin SA socket



Can accommodate 12V/100Ah or 24V/50Ah  
Lithium/Lead-acid Battery | No PV Input

**WITH UPS FUNCTION**



**HYTR-1K-100AHL**

**R14,399<sup>00</sup>**

12VDC (Lithium Battery Included)  
100Ah | 1280Wh | 1000W | 230VAC  
PV Input: 30-160VDC  
Built-in Charger

## MOBILE POWER BACKUP UNITS



**ESS-1.5KW-1.28KWH**

**R17,729<sup>00</sup>**

1500W | 230VAC  
1280Wh | ≥ 2500 cycles

**ESS-3KW-2.56KWH**

**R21,249<sup>00</sup>**

3000W | 230VAC  
2560Wh | ≥ 2500 cycles

**ESS-3KW-5.12KWH**

**R32,369<sup>00</sup>**

3000W | 230VAC  
5120Wh | ≥ 2500 cycles

**ESS-1.5KW-LITHIUM**

**R18,999<sup>00</sup>**

1500W | 230VAC  
1536Wh Lithium Battery  
1000W Max

**ESS-2KW-LITHIUM**

**R21,139<sup>00</sup>**

2000W | 230VAC  
2048Wh Lithium Battery  
1500W Max

**ESS-1KW-LITHIUM**

**R14,999<sup>00</sup>**

1000W | 230VAC  
1024Wh Lithium Battery  
1000W Max

**ESS-3KW-LITHIUM**

**R27,799<sup>00</sup>**

3000W | 230VAC  
3072Wh Lithium Battery  
1500W Max



**2  
YEAR  
warranty**

Complete with:  
12VDC Barrel Output USB-A | USB-C  
Built-in Fast Charger | PV Input

## RECHARGEABLE MOBILE BACK-UP UNITS



**DQ1208A500-1**

**R4,799<sup>00</sup>**

500W | 230VAC  
450Wh Battery

**DQ1208B1000-1**

**R6,699<sup>00</sup>**

1000W | 230VAC  
690Wh Battery

Pure  
Sine  
Wave

c/w 2 x LED Lamps | AC, USB & 12VDC Outlets Onboard LED Light



c/w 2 LED Lamps &  
Onboard LED Light

**ZY3-300WY**

**R3,699<sup>00</sup>**

300W, 230VAC  
256Wh Lithium Battery



**ZY3-1000WH**

**R8,599<sup>00</sup>**

1000W, 230VAC  
768Wh Lithium Battery

**1  
YEAR  
warranty**

**1  
YEAR  
warranty**

AC, USB & 12VDC Outlets | Note: AC output cannot be used while charging



**PBU-MS-150**

**R2,899<sup>00</sup>**

150W | 230VAC  
162Wh Lithium Battery  
Solar Input: 13-22V/30W Max



**PBU-PS-500**

**R7,999<sup>00</sup>**

505W | 230VAC  
500Wh Lithium Battery  
Solar Input: 11-26V/120W Max



**PBU-PS-1300**

**R19,999<sup>00</sup>**

1300W | 230VAC  
1254Wh LiFePO4 Battery  
Solar Input: 12-26V/250W Max

AC, USB & 12VDC Outlets | Note: AC output cannot be used while charging

THE WAIT IS OVER... **DISCOVER THE  
HEART OF INNOVATION**



CATALOGUE 25 / 26

## DOMESTIC SOCKETS & SWITCHES

<b>B7001</b> <b>R19<sup>00</sup></b> 1 Lever 1 Way Switch   2x4	<b>B7002</b> <b>R25<sup>00</sup></b> 2 Lever 1 Way Switch   2x4	<b>B7003</b> <b>R32<sup>00</sup></b> 3 Lever 1 Way Switch   2x4	<b>B7004</b> <b>R39<sup>00</sup></b> 4 Lever 1 Way Switch   2x4

<b>B7011</b> <b>R24<sup>00</sup></b> 1 Lever 2 Way Switch   2x4	<b>B7012</b> <b>R32<sup>00</sup></b> 2 Lever 2 Way Switch   2x4	<b>B7400</b> <b>R49<sup>00</sup></b> 1 x 16A Switched Socket   2x4

<b>B7401</b> <b>R49<sup>00</sup></b> 1 x 16A Switched Socket   4x4	<b>B7402</b> <b>R59<sup>00</sup></b> 2 x 16A Switched Socket   4x4	<b>B7403</b> <b>R69<sup>00</sup></b> 1 x 16A + 1 x Euro Switched Socket   4x4

<b>B7404</b> <b>R119<sup>00</sup></b> 1 x N-Type + 1 x 16A + 1 USB 5V, 500mA Outputs   4x4	<b>B7406</b> <b>R55<sup>00</sup></b> 1 x N-Type & 1 x 16A Switched Socket   4x2	<b>B7407</b> <b>R79<sup>00</sup></b> 3 x N-Type & 1 x 16A Switched Socket   4x4

## WALL BOXES WEATHERPROOF IP54 c/w socket/switch

<b>A311S</b> <b>R99<sup>00</sup></b> 16A Single Socket PVC	<b>A311D</b> <b>R199<sup>00</sup></b> 16A Double Socket Fibre (DMC)

## OUTDOOR UTILITY BOX with sliding lid, socket excl.

<b>ASO-1</b> <b>R49<sup>00</sup></b> Single Socket Outlet PVC enclosure	<b>ASO-2</b> <b>R59<sup>00</sup></b> Double Socket Outlet PVC enclosure

## S.A. EXTENDERS

**C/W 400MM CORD**

<b>MS1-3SA</b> <b>R89<sup>00</sup></b> 3 x SA 16A c/w Master On/Off Switch	<b>MS1-5SA</b> <b>R99<sup>00</sup></b> 5 x SA 16A c/w Master On/Off Switch	<b>MS1-3SA-3N</b> <b>R119<sup>00</sup></b> 3 x SA 16A + 3 x N-Type c/w Master On/Off Switch	<b>MS1-4SA-4N-SHK</b> <b>R149<sup>00</sup></b> 4xSA 16A+4xN-Type+Schuko c/w Master On/Off Switch
<b>MS2-331</b> <b>R99<sup>00</sup></b> 3 x SA + 3 x 2-Pin Euro + 1 x Schuko c/w Master On/Off Switch	<b>MS2-551</b> <b>R129<sup>00</sup></b> 5 x SA + 5 x 2-Pin Euro + 1 x Schuko c/w Master On/Off Switch	<b>MS2-331-SP</b> <b>R189<sup>00</sup></b> 3 x SA + 3 x 2-Pin Euro + 1 x Schuko c/w Master On/Off Switch c/w Surge Protection	<b>MS2-551-SP</b> <b>R229<sup>00</sup></b> 3 x SA + 3 x 2-Pin Euro + 1 x Schuko Individually Switched c/w Surge Protection

## PLUG TOPS & ADAPTORS

<b>A-005</b> <b>R119<sup>00</sup></b> 3 x N-Type 16A   5V / 2.1A Adaptor c/w 3 x USB	<b>4036</b> <b>R10<sup>00</sup></b> 16A Plug Top Hollow Pins	<b>RA300BK</b> <b>R15<sup>00</sup></b> Rubber 16A Plug Top	<b>RA310BK</b> <b>R25<sup>00</sup></b> Janus Coupler Rubber Black 16A	<b>YJ-N12-1</b> <b>R45<sup>00</sup></b> 1 x SA, 1 x Euro & 1 x Schuko

## PLASTIC EXTENTION REELS

		<ul style="list-style-type: none"> <li>• 16A SA Socket + N-Type + Schuko Socket</li> <li>• Size Of Cable: 10A/1.0mm<sup>2</sup> 16A/1.5mm<sup>2</sup></li> <li>• Medium Duty</li> </ul>
<b>ERS-1020</b> <b>R659<sup>00</sup></b> 10A   20m Length	<b>ERS-1620</b> <b>R789<sup>00</sup></b> 16A   20m Length	
<b>ERS-1625</b> <b>R899<sup>00</sup></b> 16A   25m Length	<b>ERS-1630</b> <b>R999<sup>00</sup></b> 16A   30m Length	

## HEAVY DUTY EXTENSION CORD

1.5mm<sup>2</sup> x 3 | 16A  
H07RN-F Black Rubber Cable & Rubber Janus Coupler

<b>TT-F01-3M</b> <b>R129<sup>00</sup></b> 3m	<b>TT-F01-5M</b> <b>R189<sup>00</sup></b> 5m	<b>TT-F01-10M</b> <b>R349<sup>00</sup></b> 10m
<b>TT-F01-15M</b> <b>R499<sup>00</sup></b> 15m	<b>TT-F01-20M</b> <b>R649<sup>00</sup></b> 20m	





**CLOU SINGLE PHASE METER**

CP-C018

**R109<sup>00</sup>**

230VAC | 80A | 1 Phase



**HEXING SPLIT WIRED DIN RAIL METER**

CP-H0010

**R639<sup>00</sup>**

230VAC | 80A | 1 Phase  
UIU to be ordered separately



**HEXING CIU WIRED KEYPAD**

CP-H015

**R229<sup>00</sup>**

for CP-H0010



**HEXING ULTRASONIC WATER METER**

CP-H012

**R3,099<sup>00</sup>**

c/w RF UIU  
No moving Parts-Long Life

**ZZ CLAMPS**



ZZCLAMP-150

**R155<sup>00</sup>**

Ø150mm

ZZCLAMP-250

**R165<sup>00</sup>**

Ø250mm

ZZCLAMP-280

**R169<sup>00</sup>**

Ø280mm



ZZSOCKET-1/2

**R229<sup>00</sup>**

Drive Socket 1/2"



ZZGEARLOCK-TOOL

**R169<sup>00</sup>**

Gear Lock Tool

**WAGO SPLICING CONNECTORS**

**COMPACT** Solid Wire: 0.2-4mm<sup>2</sup> | Flexi Wire: 0.14-4mm<sup>2</sup>



221-415/8

**R199<sup>00</sup>**

PACK OF 8  
5 Way | 32A



221-413/12

**R179<sup>00</sup>**

PACK OF 12  
3 Way | 32A



221-412/16

**R169<sup>00</sup>**

PACK OF 16  
2 Way | 32A

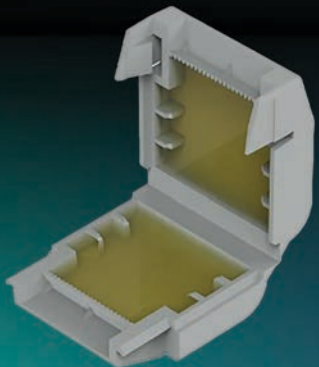
**INLINE** Solid Wire: 0.2-4mm<sup>2</sup>  
Flexi Wire: 0.2-4mm<sup>2</sup>



221-2411/12

**R179<sup>00</sup>**

PACK OF 12  
1 Way | 32A



**WAGO GEL BOX - 221 SERIES**

207-1331

Can Accommodate  
1 x 221-412 or 1 x 221-413

**R189<sup>00</sup>**

207-1332

Can Accommodate  
2 x 221-412 or 1 x 221-415

**R229<sup>00</sup>**

207-1333

Can Accommodate  
2 x 221-412 or 2 x 221-413

**R279<sup>00</sup>**

207-1431

Can Accommodate  
1 x 221-612 or 1 x 221-613

**R269<sup>00</sup>**

207-1432

Can Accommodate  
2 x 221-612 or 1 x 221-615

**R319<sup>00</sup>**

207-1433

Can Accommodate  
3 x 221-612 or 2 x 221-613

**R359<sup>00</sup>**

**WAGO THROUGH TERMINAL BLOCKS**

WITH LEVER & PUSH-IN CAGE CLAMPS | 2 Conductors | 800V



Grey

2102-1201

**R39<sup>00</sup>**



Blue

2102-1204

**R39<sup>00</sup>**



Green

2102-1207

**R119<sup>00</sup>**

Wire Size: 2.5mm<sup>2</sup> | 24A | 5.2mm | Qty: 50

2104-1201

**R55<sup>00</sup>**

2104-1204

**R59<sup>00</sup>**

2104-1207

**R149<sup>00</sup>**

Wire Size: 4mm<sup>2</sup> | 32A | 6.2mm | Qty: 50

2106-1201

**R75<sup>00</sup>**

2106-1204

**R79<sup>00</sup>**

2106-1207

**R179<sup>00</sup>**

Wire Size: 6mm<sup>2</sup> | 41A | 7.5mm | Qty: 25

207-1372

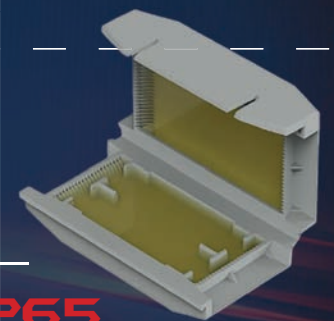
Can Accommodate  
2 x 221-2411

**R279<sup>00</sup>**

207-1373

Can Accommodate  
3 x 221-2411

**R299<sup>00</sup>**



**MB STEEL ENCLOSURES WALL MOUNTING**

**IP65**



MB-2520D140-\*

250 x 200 x 140mm

**R499<sup>00</sup>**

MB-3025D200-\*

300 x 250 x 200mm

**R639<sup>00</sup>**

MB-4030D200-\*

400 x 300 x 200mm

**R819<sup>00</sup>**

MB-5040D200-\*

500 x 400 x 200mm

**R1,299<sup>00</sup>**

MB-6040D260-\*

600 x 400 x 260mm

**R1,629<sup>00</sup>**

MB-7050D260-\*

700 x 500 x 260mm

**R2,299<sup>00</sup>**

\* Add colour to code: G - (Grey (RAL-7032)), O - Orange (Electric Orange (RAL2004))



## CIRCUIT BREAKERS

4.5KA C-CURVE DIN MCB - IEC 60947-2 / VC8036



### 1 POLE

GYM8-1-6C	6A
GYM8-1-10C	10A
GYM8-1-16C	16A
GYM8-1-20C	20A
GYM8-1-25C	25A
GYM8-1-32C	32A
GYM8-1-40C	40A

**R3100**  
EACH

GYM8-1-50C	50A
GYM8-1-63C	63A

**R3500**  
EACH



### 2 POLE

GYM8-2-6C	6A
GYM8-2-10C	10A
GYM8-2-16C	16A
GYM8-2-20C	20A
GYM8-2-25C	25A
GYM8-2-32C	32A
GYM8-2-40C	40A

**R7900**  
EACH

GYM8-2-50C	50A
GYM8-2-63C	63A

**R8900**  
EACH

EARTH LEAKAGE RELAYS - 30mA VC8035



GYL8-2-25	25A	GYL8-2-63	63A
GYL8-2-32	32A	GYL8-2-40	40A

### 2 POLE

**R18500**  
EACH

## INLINE POLYURETHANE CABLE JOINT KITS



E610037-ECONO

P0-S | 6-20mm Cable OD  
1.5-4mm<sup>2</sup>

**R8900**

E610038-ECONO

P1-S | 9-30mm Cable OD  
4-10mm<sup>2</sup>

**R12900**

E610039-ECONO

P2-S | 17-34mm Cable OD  
10-16mm<sup>2</sup>

**R16900**

E610040-ECONO

P2.5-S | 22-42mm Cable OD  
16-35mm<sup>2</sup>

**R22900**

E610041-ECONO

P3-S | 28-52mm Cable OD  
35-50mm<sup>2</sup>

**R46900**

E610042-ECONO

P3.5-S | 32-56mm Cable OD  
50-95mm<sup>2</sup>

**R79900**

E610043-ECONO

P4-S | 38-65mm Cable OD  
95-150mm<sup>2</sup>

**R1,08900**

E610044-ECONO

P5-S | 38-80mm Cable OD  
150-240mm<sup>2</sup>

**R2,01900**

## HEAT SHRINK CABLE JOINTS

4 Core Heat Cable Joint up to 3.3kV



ASA 1.5/4

**R7900**

1.5-4mm<sup>2</sup>

ASA416

**R13900**

4-16mm<sup>2</sup>

ASA2550

**R26900**

25-50mm<sup>2</sup>

ASA70150

**R56900**

70-150mm<sup>2</sup>

ASA185300

**R1,07900**

185-300mm<sup>2</sup>

## DOL STARTERS WITH OVERLOAD - 3 PHASE IP65



**R50900**  
EACH

LEI-D123\*307

1.6 - 2.5A  
0.75 - 1.1kW

LEI-D123\*310

4 - 6A  
2.2kW

LEI-D123\*314

7 - 10A  
4kW

LEI-D123\*308

2.5 - 4A  
1.5kW

LEI-D123\*312

5.5 - 8A  
3kW

LEI-D123\*316

9 - 13A  
5.5kW

LEI-D183\*321

12 - 18A | 7.5kW

**R71900**  
EACH

Add:  
\* U for 240V Coil  
\* N for 415V Coil

## 3P CONTACTORS



400V | 9A

TC1-D0910 \*

1N/O Aux

TC1-D0901 \*

1N/C Aux

**R17900**  
EACH

400V | 12A

TC1-D1210 \*

1N/O Aux

TC1-D1201 \*

1N/C Aux

**R17900**  
EACH

400V | 18A

TC1-D1810 \*

1N/O Aux

TC1-D1801 \*

1N/C Aux

**R23900**  
EACH

400V | 22A

TC1-D2210 \*

1N/O Aux

TC1-D2201 \*

1N/C Aux

**R27900**  
EACH

Add: \* U for 240V Coil | \* N for 415V Coil



400V | 40A

TC1-D40 \*

1N/O | 1N/C

**R74900**  
EACH

400V | 50A

TC1-D50 \*

1N/O | 1N/C

**R86900**  
EACH

400V | 65A

TC1-D65 \*

1N/O | 1N/C

**R99900**  
EACH

400V | 80A

TC1-D80 \*

1N/O | 1N/C

**R1,44900**  
EACH

400V | 95A

TC1-D95 \*

1N/O | 1N/C

**R1,69900**  
EACH

Add: \* U for 240V Coil | \* N for 415V Coil



400V | 25A

TC1-D2510 \*

1N/O Aux

TC1-D2501 \*

1N/C Aux

**R34900**  
EACH

400V | 32A

TC1-D3210 \*

1N/O Aux

TC1-D3201 \*

1N/C Aux

**R47900**  
EACH

400V | 38A

TC1-D3810 \*

1N/O Aux

TC1-D3801 \*

1N/C Aux

**R55900**  
EACH

TC1-D3801 \*

1N/C Aux

TC1-D3801 \*

1N/C Aux

**R55900**  
EACH

Add: \* U for 240V Coil | \* N for 415V Coil



### CORDLESS POWER TOOLS



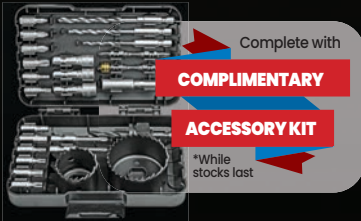
Brushless Hammer Drill

KUC30.1

R3,199<sup>00</sup>

NEW

20V | 13mm metal-chuck  
60Nm | c/w 2 x 2.0Ah Battery, Charger & Stack Case



Complete with  
**COMPLIMENTARY ACCESSORY KIT**  
\*While stocks last

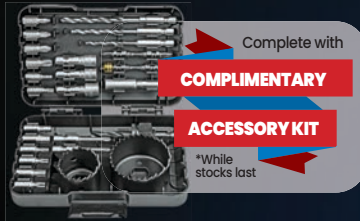
NEW

12V Hammer Drill & Impact Driver Combo  
c/w 2 x 12V 2.0Ah, 1.5A Charger & Stacking Case



KUG02

R4,599<sup>00</sup>



Complete with  
**COMPLIMENTARY ACCESSORY KIT**  
\*While stocks last

Hammer Drill  
No Load: 0-1800rpm  
Chuck Size: 10mm  
Impact: 0-27000bpm  
Max Torque: 40Nm

Impact Driver  
No Load: 0-3300rpm  
Chuck Size: 1/4" Hex  
Impact: 0-4000bpm  
Max Torque: 140Nm



Wet-Dry Vacuum Cleaner

R3,499<sup>00</sup>

High 1.3m<sup>3</sup>/min,  
Low 0.7m<sup>3</sup>/min  
2 Speed | 3.6m  
Built in hose  
Battery & Charger excluded

KH035.9

Portable Fan - Ø242mm

KU066.9

R1,799<sup>00</sup>



0-2500rpm | 2 Speed | 9m<sup>3</sup>/12.8m<sup>3</sup>/min  
AC Adaptor | Battery & Charger excl

### CORDED POWER TOOLS



KUS04P

R999<sup>00</sup>

Angle Grinder  
830W | 115mm | Soft Start & Anti-Restart Function



KUS35P

R2,999<sup>00</sup>

Angle Grinder | 2200W | 230mm  
Soft Start & Anti-Restart Function



Rotary Hammer

KUX12P

R2,999<sup>00</sup>

850W motor | SDS Plus Powerful 3J of impact energy drilling, hammer drilling & chiselling



Cordless Driver & Stacking Case

KUB61.91

R3,499<sup>00</sup>

- Compact & durable with long motor life  
- Incl. 1x screw driver bit & 1x belt hook, 1x bit clip

Corded Drill  
500W Robust motor  
10mm | Keyless Chuck

KU110K

R799<sup>00</sup>



KU120

R999<sup>00</sup>

Corded Drill  
650W Robust motor  
13mm | Keyed Chuck



### HAND TOOLS



Cable Cutter

LK-60A

R159<sup>00</sup>

For cutting copper & aluminium cables up to 60mm<sup>2</sup>



Nutdriver Kit

SB154115

R159<sup>00</sup>

7pcs | Sizes: 5, 6, 8, 10, 11, 12, 13mm

Electronic Side Cutter

HT10-3069

R55<sup>00</sup>

130mm

Shifting Spanners

HT12-1063

R199<sup>00</sup>

(254mm) 10"



Folding Tool

FLH-0057

R65<sup>00</sup>

8pc Aluminium Frame



### 1000V VDE TOOLS

VDE TOOL BAG

V10-012

R1,399<sup>00</sup>

1000V 12 Pc Electrician Tool Set+ Carry Bag

VDE TOOL KIT

V10-010

R929<sup>00</sup>

1000V 10 Pc Electrician Tool Set + Carry Bag (VDE)



VDE SCREWDRIVER KIT

VFL-2234

R379<sup>00</sup>

1000V 8 Pc Electrician Tool Set

SIDE CUTTER

V10-2110

R229<sup>00</sup>

(150mm) 6"



VOLT TESTERS

NCV

C-LOGIC-25

R149<sup>00</sup>

90-1000VAC Non Contact



NCV

H

NCV

Apo

Apo

MAX

AUTO



DIGITAL METERS

C-LOGIC-3200

R879<sup>00</sup>

600VAC/DC  
200mA AC/DC  
20MΩ Resistance



NCV

Apo

NCV

Apo

Apo

C-LOGIC-35

R449<sup>00</sup>

20-1000VAC Non Contact



CLAMP METER

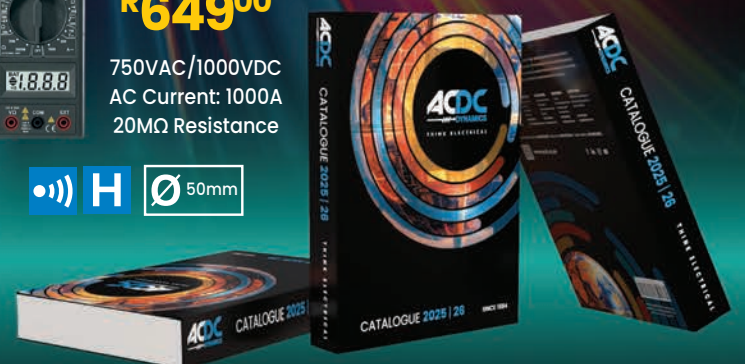
C-LOGIC-80

R649<sup>00</sup>

750VAC/1000VDC  
AC Current: 1000A  
20MΩ Resistance

NCV H Ø 50mm

THE WAIT IS OVER... DISCOVER THE HEART OF INNOVATION



CATALOGUE 25 / 26

## TOOL BOXES



MJ-3083

**R599<sup>00</sup>**

Aluminium | 520L x 210H x 230Wmm

MJ-3085

**R649<sup>00</sup>**

Aluminium | 594L x 210H x 230Wmm



MJ-10555A

**R159<sup>00</sup>**

Plastic Tool Case  
395 x 235 x 175mm

MJ-10237

**R229<sup>00</sup>**

2 Door Storage Organiser  
Adjustable Partitions  
22 Compartments

## CORDLESS POWER TOOLS

- All supplied c/w 1 x Battery & Fast Charger



LCD777-1S

**R1,429<sup>00</sup>**

20V Cordless Drill  
0-400 / 0-1400RPM | 35Nm  
13mm Chuck



LCD777-1SC

**R1,599<sup>00</sup>**

20V Cordless Hammer Drill  
0-400 / 0-1400RPM | 50Nm  
13mm Chuck



LCH777-1

**R1,859<sup>00</sup>**

20V Cordless Rotary Hammer  
0-900RPM | 0-5000BPM  
Impact Force: 1.1J | SDS Plus Chuck



LCW777-1B

**R1,689<sup>00</sup>**

20V Cordless Impact Wrench  
0-2800RPM | 250Nm  
1/2" Square Drive



LCD666-1S

**R899<sup>00</sup>**

12V Cordless Drill  
0-350/0-1300rpm | 25Nm  
10mm Chuck



LCG777-1

**R2,339<sup>00</sup>**

20V Cordless Angle Grinder  
10000RPM | 115/125mm Disc  
Spindle Lock

## CABLE MEASUREMENT SYSTEM

RM35

**R8,299<sup>00</sup>**

0.5 - 99999.99m  
Ø 2 - 32mm | 1m/s

### Features:

- Durable Lithium Ion battery
- 1.5" LCD Display (with backlighting)
- Calibration capable
- Totalling function



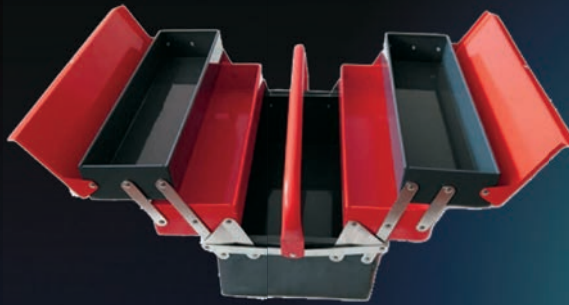
**NEW**



### Kit Includes:

- 1 x RM35, 1 x belt with clip system 1200 mm, 1 x anchor pad,
- 1 x mounting plate system case,
- 2 x guide jaws grey (Ø 12 mm / 18 mm),
- 2 x guide jaws red (Ø 6 mm / 24 mm),
- 1 x USB-C charging cable, 1 x RUNPOTEC system case, 1 x mains plug

## STEEL CANTILEVER TOOL BOX



SB210206

**R549<sup>00</sup>**

404L x 195H x 200Wmm

MJ-20565

**R639<sup>00</sup>**

565L x 215H x 220Wmm

## DOLLY SET



HL5039

**R79<sup>00</sup>**

Set of 2 | Max load 100kg/set

## MULTIPURPOSE FOLDING TROLLEY

ZYD-01

**R1,249<sup>00</sup>**

Maximum load 240kg  
560 x 380 x 100(H)mm



## CABLE MANAGEMENT ROLLERS

XB300+MM

**R4,299<sup>00</sup>**

Profi-Cable Roller c/w  
Multi-Function Mandrel  
Max Drum Weight: 300kg



XB500

**R5,169<sup>00</sup>**

Profi-Cable Roller  
Max Drum Weight: 800kg

RP-MM

**R1,219<sup>00</sup>**

Multi-Function Mandrel  
Attachment

VE13801

**R2,499<sup>00</sup>**

Kabelrolator Cable Decoiler  
Max Drum Weight: 1000Kg

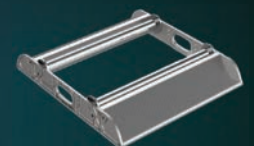


QUICK ROLL BASIC

VE14601

**R3,799<sup>00</sup>**

Max Drum Width: 458mm  
Ø150-600mm  
Max Load: 120kg



QUICK ROLL ORIGINAL + XL

VE12801

**R6,149<sup>00</sup>**

Max Drum Width: 515mm  
Ø200-700mm  
Max Load: 200kg

VE12802

**R7,599<sup>00</sup>**

Max Drum Width: 660mm  
Ø200-700mm  
Max Load: 250kg

[acdc.co.za](http://acdc.co.za)

NATIONAL CALL CENTRE: Sales 010 202 3400 | Technical 010 202 3500 | Solar Hot Line 010 045 8002



### HEAD OFFICE - LONGMEADOW:

info@acdc.co.za | 010 202 3300  
26 Nguni Drive, Longmeadow  
Business Estate, Edenvale

### OTHER BRANCHES:

GERMISTON: 011 418 9600 PTN: 031 700 4215  
CPT: 021 492 2000 RVH: 031 492 4800



Visit our Website