



FLAMEPROOF HAZARDOUS AREAS & MINING

Navigate the complexities of hazardous environments with our specialized products for Hazardous Areas & Mining. Our robust and reliable solutions are designed to withstand extreme conditions, ensuring safety and operational efficiency.



THINK ELECTRICAL

AMPCO SWITCHED SOCKETS



25A/40A



63A



25A

40A



63A

Splashproof Switched Dual Interlocked Socket - Aluminium

Code	Poles	Amperage	Rated Voltage	Size (HxWxD) mm
A1207	3P + E	25A	400/500V	290 x 180 x 155
A1210	3P + N + E	25A	400/500V	290 x 180 x 155
A1213	3P + E	40A	400/500V	290 x 180 x 155
A1216	3P + N + E	40A	400/500V	290 x 180 x 155
A1219	3P + E	63A	400/500V	330 x 200 x 190
A1224	3P + N + E	63A	400/500V	330 x 200 x 190

Splashproof Dual Interlocked Socket - Aluminium with Intergrated Circuit Breaker

Code	Poles	Amperage	Rated Voltage	Size (HxWxD) mm
A1221	3P + E	63A	400/500V	321 x 205 x 140

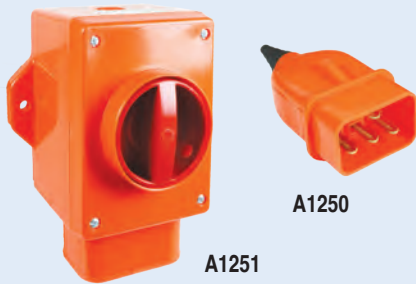
Plugs Din Flat Oval Splashproof - Aluminium

Code	Poles	Amperage	Rated Voltage	Size (HxWxD) mm
A1206	3P + E	25A	400/500V	125 x 90 x 40
A1209	3P + N + E	25A	400/500V	125 x 90 x 40
A1212	3P + E	40A	400/500V	190 x 110 x 45
A1215	3P + N + E	40A	400/500V	190 x 110 x 45
A1218	3P + E	63A	400/500V	230 x 130 x 55
A1223	3P + N + E	63A	400/500V	230 x 130 x 55

Plugs Din Flat Oval Splashproof - Plastic

Code	Description	Amperage	Rated Voltage	Size (HxWxD) mm
A1230	3P + E	25A	400/500V	115 x 90 x 48
A1231	3P + E	40A	400/500V	183 x 112 x 53

3 PHASE SOCKET OUTLET IP44



A1251

A1250

Switched Industrial Socket Outlet - 380-415VAC

Code	Description	Size (mm)
A1251	16A 3PH+E 6H Neesoc Socket Splash Proof	145 x 107 x 118mm
A1253	25A 3PH+E 6H Neesoc Socket Splash Proof	126 x 120 x 162mm
A1250	16A 3PH+E 6H Plug Top	45 x 60 x 97mm
A1252	25A 3PH+E 6H Plug Top	45 x 60 x 97mm

Material: ABS (Flame Retardant and UV Resistant)

Gland Entry: 2 x M20 (Top and Bottom)

EXPLOSION PROOF PLUGS & SOCKETS IP66

Material: GRP (Glass Fibre Reinforced Polyester Resin)
 Suitable for use in: Zone1, 2 ; Zone 21, 22
 Explosion Protection: 112 GD EX de IIC T6G6 / EX ED
 A21 T80°C IP66



Plug & Socket

Rated Current (A)	Rated Voltage (V)	Poles	Plug	Socket	Coupling Set
16A	200 - 250	2P+E	BCZ8060-16/250/3P/T	BCZ8060-16/250/3P/Z	BCZ8060-16/250/3P/L
	380 - 415	3P+N+E	BCZ8060-16/415/5P/T	BCZ8060-16/415/5P/Z	BCZ8060-16/415/5P/L
	480 - 500	3P+E	BCZ8060-16/500/4P/T	BCZ8060-16/500/4P/Z	BCZ8060-16/500/4P/L
32A	380 - 415	3P+N+E	BCZ8060-32/415/5P/T	BCZ8060-32/415/5P/Z	BCZ8060-32/415/5P/L
	480 - 500	3P+E	BCZ8060-32/500/4P/T	BCZ8060-32/500/4P/Z	BCZ8060-32/500/4P/L
63A	380 - 415	3P+N+E	BCZ8060-63/415/5P/T	BCZ8060-63/415/5P/Z	-
	480 - 500	3P+E	BCZ8060-63/500/4P/T	BCZ8060-63/500/4P/Z	-

ALUPRES SERIES - DIECAST INTERLOCKED SOCKET OUTLETS

Switched Sockets - In Aluminium Alloy for heavy duty use, with mechanical interlock **IP67**

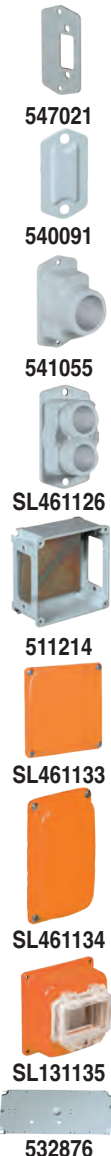
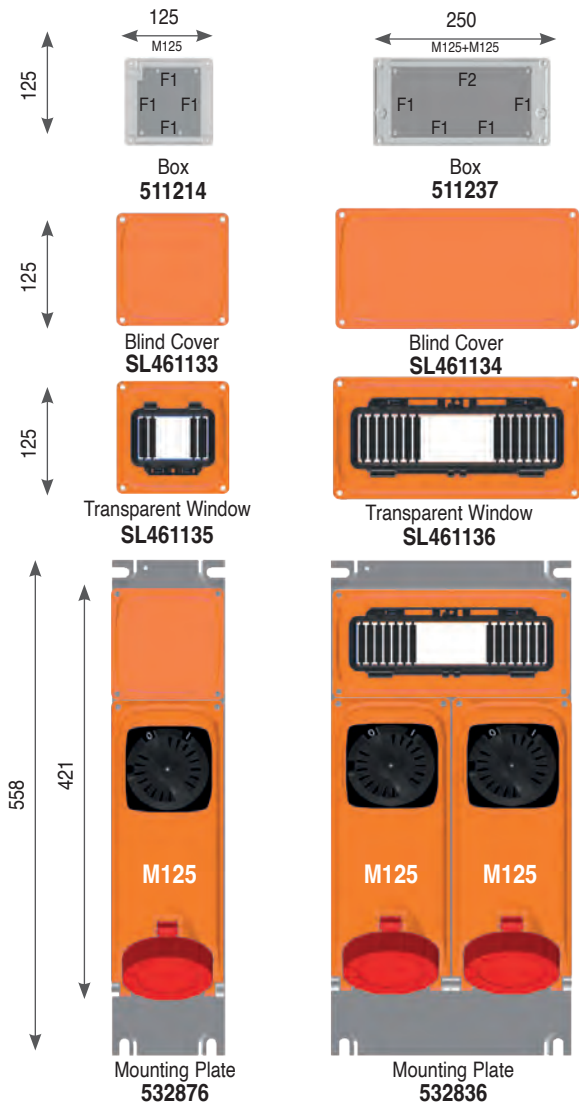
The system contains versions from 16A up to 125A, with or without fuses, with MCB or with an EN 50022 rail that can be fitted with modular devices. All the sockets can be combined in compositions thanks to the dedicated boxes with blind covers or transparent windows. The casing is treated with eco-friendly anticorrosion passivation using fluoro-zirconium and coated with hot polymerized scratch-resistant non-toxic polyester paint. The interlock system is made of steel and the isolator switch is certified with the AC3-AC23A category at rated current. See Shortform for table of chemical resistance.

Sockets supplied with bottom blind flange. Top flange to be ordered separately.



Rated Current (A)	Rated Voltage (V)	Poles	h. ref.	AC23A @400V	Terminal Capacity	Flange Type	Mod. 125	Mod. 185
16A	230	2P + \perp	6	7.5kW	1-10mm ²	F1	SF29641	-
	400	3P + \perp	6	7.5kW	1-10mm ²	F1	SF29642	-
		3P + N + \perp	6	7.5kW	1-10mm ²	F1	SF29643	-
32A	500	3P + \perp	7	7.5kW	1-10mm ²	F1	SF29649	-
	230	2P + \perp	6	15kW	1-10mm ²	F1	SF29644	-
	400	3P + \perp	6	15kW	1-10mm ²	F1	SF29645	-
63A		3P + N + \perp	6	15kW	1-10mm ²	F1	SF29646	-
	500	3P + \perp	7	15kW	1-10mm ²	F1	SF29650	-
	400	3P + \perp	6	34kW	6-35mm ²	F1	SF29647	-
125A		3P + N + \perp	6	34kW	6-35mm ²	F1	SF29648	-
	500	3P + \perp	7	34kW	6-35mm ²	F1	SF29651	-
	400	3P + \perp	6	52kW	6-70mm ²	F3	-	SF29652
		3P + N + \perp	6	52kW	6-70mm ²	F3	-	SF29653
	500	3P + \perp	7	52kW	6-70mm ²	F3	-	SF29654

Possible Configurations of Alupres Sockets & Accessories



Flanges - To be ordered separately

Code	Flange Type
547021	Reduction flange F2 to F1
547031	Reduction flange F3 to F1
547151	Reduction flange F5 to F1
547053	Reduction flange F5 to F3
540091	Blind closing flange F1
540033	Blind closing flange F3
541055	Flat flange F1 / M25
540180	Raised flange F1 / M32
540185	Raised flange F2 / M32
540186	Raised flange F2 / M40
540190	Raised flange F3 / M40
540195	Raised flange F5 / M50
SL461126	2 Entry Threaded Flange F1 / 2x M25
SL461137	2 Entry Threaded Flange F3 / 2x M32
SL461127	2 Entry Threaded Flange F3 / 2x M40

Junction Boxes

Code	Socket Type	Flange Type	Size (mm)
511214	Mod. 125	F1 x 4	125 x 125 x 63
511237	Mod. 125	F1 x 4 + F2 x 1	252 x 125 x 63
511312	Mod. 185	F3 x 4	185 x 185 x 95

Blind Covers for Junction Boxes

Code	Socket Type	DIN Mod QTY	Size (mm)
SL461133	Mod. 125	-	125 x 125 x 10
SL461134	Mod. 125	-	252 x 125 x 50
SL461131	Mod. 185	-	185 x 185 x 50

Transparent Cover

Code	Socket Type	QTY	Size (mm)
SL461135	Mod. 125	4	125 x 125 x 50
SL461136	Mod. 125	9	252 x 125 x 50
SL461132	Mod. 185	7.5	185 x 185 x 50

Mounting Plates

Code	Socket Type	Sockets QTY	Size (mm)
532876	Mod. 125	1	558 x 125
532836	Mod. 125	2	558 x 250

XCEE SERIES - HIGH PERFORMANCE SOCKETS

- Rated Insulation Voltage: 690V
- IP Rating: **IP66/67/69**
- Frequency: 50/60Hz
- Safe disconnection of connections in the field
- Easy to use - Ergonomic Design
- Robust - IK10 Impact Rating
- Heavy Duty Terminals with Cage Clamps

Fully Assembled Rotor Interlocked Sockets



Rated Current (A)	Rated Voltage (V)	h. ref	Poles	Rotoswitch Couplers	Straight Rotoswitch Sockets	20° Angled Rotoswitch Sockets
16A (AC23)	230	6	2P + $\overline{\text{N}}$	410126	412126	413126
	400	6	3P + $\overline{\text{N}}$	410136	412136	413136
		6	3P + $\overline{\text{N}}$ + N	410146	412146	413146
	480-525	7	3P + $\overline{\text{N}}$	410137	-	-
		7	3P + $\overline{\text{N}}$ + N	410147	-	-
32A (AC23)	230	6	2P + $\overline{\text{N}}$	410226	412226	413226
	400	6	3P + $\overline{\text{N}}$	410236	412236	413236
		6	3P + $\overline{\text{N}}$ + N	410246	412246	413246
	380-440	3	3P + $\overline{\text{N}}$	410233	-	-
		480-525	7	3P + $\overline{\text{N}}$	410237	-
	7		3P + $\overline{\text{N}}$ + N	410247	-	-
63A NEW (AC23)	400	6	3P + $\overline{\text{N}}$	410336	412336	413336
		6	3P + $\overline{\text{N}}$ + N	410346	412346	413346
	480-525	7	3P + $\overline{\text{N}}$	410337	-	-
		7	3P + $\overline{\text{N}}$ + N	410347	-	-
125A NEW (AC23)	400	6	3P + $\overline{\text{N}}$	410436	412436	413436
		6	3P + $\overline{\text{N}}$ + N	410446	412446	413446
	480-525	7	3P + $\overline{\text{N}}$	410437	-	-
		7	3P + $\overline{\text{N}}$ + N	410447	-	-

Fully Assembled XCEE Plugs & Sockets

NEW



Rated Current (A)	Rated Voltage (V)	Clock Position	Poles	Plugs	Couplers	65° Angled Wall Mounted Inlets	65° Angled Wall Mounted Sockets
16A	230	6	2P + $\overline{\text{N}}$	760126	770126	766126	776126
	400	6	3P + $\overline{\text{N}}$	760136	770136	766136	776136
		6	3P + $\overline{\text{N}}$ + N	760146	770146	766146	776146
	480-525	7	3P + $\overline{\text{N}}$	760137	770137	-	-
		7	3P + $\overline{\text{N}}$ + N	760147	770147	-	-
32A	230	6	2P + $\overline{\text{N}}$	760226	770226	766226	776226
	400	6	3P + $\overline{\text{N}}$	760236	770236	766236	776236
		6	3P + $\overline{\text{N}}$ + N	760246	770246	766246	776246
	380-440	3	3P + $\overline{\text{N}}$	760233	770233	-	776233
		480-525	7	3P + $\overline{\text{N}}$	760237	770237	-
	7		3P + $\overline{\text{N}}$ + N	760247	770247	-	-
63A	400	6	3P + $\overline{\text{N}}$	760336	770336	766336	776336
		6	3P + $\overline{\text{N}}$ + N	760346	770346	766346	776346
	480-525	7	3P + $\overline{\text{N}}$	760337	770337	-	-
		7	3P + $\overline{\text{N}}$ + N	760347	770347	-	-
125A	400	6	3P + $\overline{\text{N}}$	760436	770436	766436	776436
		6	3P + $\overline{\text{N}}$ + N	760446	770446	766446	776446
	480-525	7	3P + $\overline{\text{N}}$	760437	770437	-	-
		7	3P + $\overline{\text{N}}$ + N	760447	770447	-	-

* Other Combinations available on request

XCEE & ROTOR SERIES - COMPONENTS

- Rated Insulation Voltage: 690V
- IP Rating: **IP66/67/68/69**
- Frequency: 50/60 Hz
- Safe disconnection of connections in the field
- Easy to use – Ergonomic Design
- Robust – IK10 Impact Rating
- Heavy Duty Terminals with Cage Clamps
- Rotorswitch Socket - AC23

Plug or Socket Modules



Rated Current (A)	Rated Voltage (V)	Clock Position	Poles	Plug Module	Rotoswitch Socket Module	Unswitched Socket Module
16A	230	6	2P + $\overline{\text{N}}$	769126	419126	779126
	400	6	3P + $\overline{\text{N}}$	769136	419136	779136
		6	3P + $\overline{\text{N}}$ + N	769146	419146	779146
	480-525	7	3P + $\overline{\text{N}}$	769137	419137	779137
7		3P + $\overline{\text{N}}$ + N	769147	419147	779147	
32A	230	6	2P + $\overline{\text{N}}$	769226	419226	779226
	400	6	3P + $\overline{\text{N}}$	769236	419236	779236
		6	3P + $\overline{\text{N}}$ + N	769246	419246	779246
	380-440	3	3P + $\overline{\text{N}}$	769233	419233	779233
		480-525	7	3P + $\overline{\text{N}}$	769237	419237
7			3P + $\overline{\text{N}}$ + N	769247	419247	779247
63A	400	6	3P + $\overline{\text{N}}$	769336	419336	779336
		6	3P + $\overline{\text{N}}$ + N	769346	419346	779346
	480-525	7	3P + $\overline{\text{N}}$	769337	419337	779337
		7	3P + $\overline{\text{N}}$ + N	769347	419347	779347
125A	400	6	3P + $\overline{\text{N}}$	769436	419436	779436
		6	3P + $\overline{\text{N}}$ + N	769446	419446	779446
	480-525	7	3P + $\overline{\text{N}}$	769437	419437	779437
		7	3P + $\overline{\text{N}}$ + N	769447	419447	779447

Handles - For plug or Coupler



Straight Panel Mounted Flanges



20° Angled Panel Mounted Flanges



Code	Rated Current	Poles	Entry Cable Ø (mm)	Code	Rated Current	Poles	Flange Sizes (mm)	Code	Rated Current	Poles	Flange Sizes (mm)
419001	16A	2P + $\overline{\text{N}}$	6,3 - 18	419021	16A	2P + $\overline{\text{N}}$	65x83	419031	16A	2P + $\overline{\text{N}}$	65x83
419002	16A	3P + $\overline{\text{N}}$	6,3 - 18	419022	16A	3P + $\overline{\text{N}}$	65x83	419032	16A	3P + $\overline{\text{N}}$	65x83
419003	16A	3P + N + $\overline{\text{N}}$	9 - 23	419023	16A	3P + N + $\overline{\text{N}}$	65x83	419033	16A	3P + N + $\overline{\text{N}}$	65x83
	32A	2P/3P + $\overline{\text{N}}$	9 - 23		32A	2P/3P + $\overline{\text{N}}$	65x83		32A	2P/3P + $\overline{\text{N}}$	65x83
419004	32A	3P + N + $\overline{\text{N}}$	13 - 27	419024	32A	3P + N + $\overline{\text{N}}$	100x108	419034	32A	3P + N + $\overline{\text{N}}$	100x108
419005	63A	2/3P + $\overline{\text{N}}$ / 3P + N + $\overline{\text{N}}$	14 - 36	419025	63A	2/3P + $\overline{\text{N}}$ / 3P + N + $\overline{\text{N}}$	100x108	419035	63A	2/3P + $\overline{\text{N}}$ / 3P + N + $\overline{\text{N}}$	100x108
419006	125A	2/3P + $\overline{\text{N}}$ / 3P + N + $\overline{\text{N}}$	16 - 50	419026	125A	2/3P + $\overline{\text{N}}$ / 3P + N + $\overline{\text{N}}$	114x114	419036	125A	2/3P + $\overline{\text{N}}$ / 3P + N + $\overline{\text{N}}$	114x114

TAIS Enclosers - Suitable for XCEE - Wall Mounted Boxes & Frames

Adapter Frames



Blind Flanges



65° Angled Boxes



Single Gang Boxes



Double Gang Boxes



Code	Flange Dimension (mm)	Adapter Frame Dimension (mm)	Code	Flange Dimension (mm)	Code	Flange Dimension (mm)	Box Dimension (mm)	Code	Flange Dimension (mm)	Box Dimension (mm)	Code	Flange Dimension (mm)	Box Dimension (mm)
532841	65x83	100x108	532843	65x83	532131	65x83	92x125	532101	65x83	92x125	532121	2x(65x83)	92x255
-	-	-	532842	100x108	532132	100x108	92x125	532102	100x108	92x125	532122	2x(100x108)	125x352
-	-	-	-	-	532133	114x114	125x185	532103	114x114	125x185	-	-	-

TAIS SERIES



M125



M250 Direct Power



M250 DIN Guide

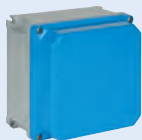
M125 Interlocked socket-outlets

Amps	Rated Voltage	Poles	h. ref.	Code	AC23A @ 400V	Terminal Capacity	Size (mm) H x W x D	Entry
16A	230V	2P + \equiv	6	467126	8.9kW	1-10mm ²	350 x 125 x 160	M25
	400V	3P + \equiv	6	467136	8.9kW	1-10mm ²	350 x 125 x 160	M25
		3P + N + \equiv	6	467146	8.9kW	1-10mm ²	350 x 125 x 160	M25
32A	230V	2P + \equiv	6	470226	17.7kW	1-10mm ²	350 x 125 x 185	M32
	400V	3P + \equiv	6	470236	17.7kW	1-10mm ²	350 x 125 x 185	M32
		3P + N + \equiv	6	470246	17.7kW	1-10mm ²	350 x 125 x 185	M32
	380/500V	3P + \equiv Container	3	470233	17.7kW	1-10mm ²	350 x 125 x 185	M32
63A	230V	2P + \equiv	6	470326	34.9kW	6-35mm ²	385 x 125 x 203	M32
	400V	3P + \equiv	6	470336	34.9kW	6-35mm ²	385 x 125 x 203	M32
		3P + N + \equiv	6	470346	34.9kW	6-35mm ²	385 x 125 x 203	M32

M250 Interlocked socket-outlets

Amps	Rated Voltage	Poles	h. ref.	Direct Power	DIN Guide	AC23A @ 400V	Terminal Capacity	Size (mm) H x W x D	Entry
125A	400V	3P + \equiv	6	480436	483436	55KW	10-70 mm ²	594 x 250 x 252	Up to M63 (by the installer)
		3P + N + \equiv	6	480446	483446	55KW	10-70 mm ²	595 x 250 x 252	
	480-525V	3P + \equiv	7	480437	-	55KW	10-70 mm ²	596 x 250 x 252	
		3P + N + \equiv	7	480447	-	55KW	10-70 mm ²	597 x 250 x 252	

Boxes for Socket Outlet Combinations

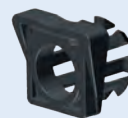


Blind Cover



Transparent Window

Code	Max no. of M125	Max no. of M250	No. of DIN Mod	Size (mm) L x W x H
Complete Box with Blind Cover				
532200	1	-	-	125x185x125
532202	2	1	-	250x185x125
532204	3	-	-	380x185x125
Complete Box with Transparent Window				
532300	1	-	5	125x185x150
532302	2	1	12	250x185x150
532304	3	-	19	380x185x150



538432

Fitting - for rapid coupling of boxes to sockets

Code	Hole Type	Mounting hole mm	Max Ø for cable passage
538425	M25	25.5	16mm
538432	M32	32.5	20mm



538800

Mounting Plates for M125

Code	Max no. of installable sockets Mod. 125	Size (mm) W x H
538800	1	125 x 630
538802	2	250 x 630
538804	3	380 x 630

Padlockable Spare Knobs

- For TAIS & ALUPRES Modules



Code	Amps	Socket Type
538225	32/63A	M125



Auxiliary Contacts

Code	Switch Type	Rated Current	Contact Type
270326	16-125A	10A	NC (Late Break)
270327			NC (Early Break)
270330			NC
270331			NO
270332			NO + NC

TAIS MIGNON SERIES - SMALL DEVICES



202271
202276
202282



202275

261435



261432



101031

Rocker Switches - in thermosetting (GRP), technopolymer cable gland - IP67

Code	202271	202276	202275	202282
Poles	1P (1 Lever)	1CO (1 Lever)	2 x 1P (2 Lever)	2P (1 Lever)
Entry Type	1 x M20 (Top)			
Box Dimensions (mm)	62 x 80 x 48			
Rated Current/Voltage	16A/250VAC, 10A/400VAC			

Push Buttons - in thermosetting (GRP), technopolymer cable gland - IP67

Code	261435	261445
Contact Configuration	1NO	1NC
Entry Type	1 x M20 (Top)	
Box Dimensions (mm)	62 x 80 x 51	
Rated Current/Voltage	10A/400VAC	

Start-Stop Push-Button Station - In thermosetting (GRP), technopolymer cable gland - IP67

Code	261432
Entry Type	1 x M20 (Top)
Box Dimensions (mm)	62 x 80 x 51
Rated Current/Voltage	10A/400VAC

Junction Boxes - In thermosetting (GRP), technopolymer cable gland - IP65

Code	Entry Type	Entry Position	External Size mm
101021	2 x M20	Top / Bottom	62 x 80 x 38
101031	3 x M20	Top / Bottom / Side	62 x 80 x 38
101041	4 x M20	Top / Bottom / Left / Right	62 x 80 x 38
101061	6 x M20	Top / Bottom / 2 x Left / 2 x Right	62 x 80 x 38
101151	6 x M20	Top / Bottom / 2 x Left / 2 x Right	77 x 102 x 48
101161	6 x M25	Top / Bottom / 2 x Left / 2 x Right	77 x 102 x 48



Made of Thermosetting (GRP) to resist high temperatures and chemicals.



IP67 - Resistant to liquids and humidity



Easily assembled and are able to create small combinations



Compact dimensions and can be either flush mounted or wall mounted. (Flush mounted units only available ex-indent)

CAM SERIES - ENCLOSED ROTARY ISOLATORS IP67



25-63A
292201

100-600A
292503



538130

Isolator Switches - In Thermosetting (GRP) - IP67

Code	Poles	Amps	AC23A@400V	Entry Type	Terminal	Size (mm)
292201	2	25A	12kW	2 x M25	1-10mm ²	92 x 125 x 122
292202	3	25A	13.9kW	2 x M25	1-10mm ²	92 x 125 x 122
292203	4	25A	13.9kW	2 x M25	1-10mm ²	92 x 125 x 122
292302	3	40A	17.7kW	2 x M32	4-10mm ²	125 x 185 x 165
292303	4	40A	17.7kW	2 x M32	4-10mm ²	125 x 185 x 165
292412	3	63A	27.7kW	2 x M32	10-35mm ²	125 x 185 x 165
292413	4	63A	27.7kW	2 x M32	10-35mm ²	125 x 185 x 165
292503*	4	100A	27.7kW	2 x a	10-25mm ²	185 x 250 x 261
292623*	4	200A	110kW	2 x b	16-70mm ²	250 x 370 x 261
292703*	4	400A	-	Blind	-	370 x 500 x 261
292733*	4	600A	-	Blind	-	370 x 500 x 261

25-63A Supplied without glands. *100-600A supplied without blind flanges - to be ordered separately.

Blind Flanges - To be ordered separately

Code	Type	Size (mm)	Flange Height
538130	a	110 x 60	45
538230	b	175 x 60	45
538330	c	295 x 60	45

ALUMINIUM HEAVY DUTY PLUGS & SOCKETS IP66



Switched Sockets - For use from 400V to 1000V. In steel with electrically interlocked circuit breaker **IP65**

ALUMAX series low voltage switched sockets with electrical interlock are a range of products in 15/10 steel sheet, finished with hot polymerized scratch-resistant non-toxic polyester painting, equipped with an aluminium alloy socket for heavy duty uses, from 250A up to 400A. Each connection is equipped with a double pilot contact. The sockets (electrically interlocked) are equipped with an earth leakage MCCB with 36kA breaking capacity. The operator can be padlocked both at 0 and 1 position. See Shortform for table of chemical resistance.

Code	Rated Voltage	Amps	Poles	Pilot Contacts		Size (mm) H x W x D
				N° of Loads	Size (mm ²)	
480530	400V	250A	3P + \neq	2	10	650 x 400 x 252
480550	400V	250A	3P + N + \neq	2	6	650 x 400 x 252
480531	500V	250A	3P + \neq	2	10	650 x 400 x 252
480551	500V	250A	3P + N + \neq	2	6	650 x 400 x 252
480650	400V	320A	3P + N + \neq	2	6	660 x 500 x 252
480651	500V	320A	3P + N + \neq	2	6	660 x 500 x 252
480750	400V	400A	3P + N + \neq	2	6	660 x 500 x 252
480751	500V	400A	3P + N + \neq	2	6	660 x 500 x 252



Plugs



Connectors



Panel Inlet



Panel Socket

Plugs - Female - In aluminium alloy with anti-corrosion treatment **IP67**

Code	Rated Voltage	Amps	Poles	Pilot Contacts	
				N° of Loads	Size (mm ²)
750530	1000VAC	250A	3P + \neq	2	10
750550	1000VAC	250A	3P + N + \neq	2	6
750650	1000VAC	320A	3P + N + \neq	2	6
750750	1000VAC	400A	3P + N + \neq	2	6

Connectors - Male - In aluminium alloy with anticorrosion treatment **IP67**

760530	1000VAC	250A	3P + \neq	2	10
760550	1000VAC	250A	3P + N + \neq	2	6

Panel Inlet - Female - In aluminium alloy with anticorrosion treatment **IP67**

751530	1000VAC	250A	3P + \neq	2	10
751550	1000VAC	250A	3P + N + \neq	2	6

Panel Socket - Male - In aluminium alloy with anticorrosion treatment **IP67**

761530	1000VAC	250A	3P + \neq	2	10
761550	1000VAC	250A	3P + N + \neq	2	6

ALUMINIUM HEAVY DUTY PLUGS & SOCKETS IP66



Socket



Plug



Watertight Plugs & Interlocked Switched Sockets

Plug Code	Socket Code	Poles	Current Rating	Voltage	Entries	Socket Dimensions (mm)
-----------	-------------	-------	----------------	---------	---------	------------------------

Square Type - 15/30A

PD230PAMN	PD230SAM	2P + \neq	15A	230-400VAC	2 x M25	178H x 87L x 94D
PD160/4BPAM	PD998BSAM	3P + \neq	15A	230-400VAC	2 x M25	178H x 87L x 94D
PD30/4PAMN	PD30/4SAM	3P + \neq	30A	230-400VAC	2 x M25	181H x 98L x 98D

Round Type - 10A

PD84/3PAM	PD84/3SAM	2P + \neq	5A	230-400VAC	2 x M20	95L x 78D
PD84/4PAM	PD84/4SAM	3P + \neq	5A	230-400VAC	2 x M20	95L x 78D

Round Type - 15A

PD230PAMN	PD160/3SAM	2P + \neq	15A	230-400VAC	2 x M25	95L x 70D
PD160/4BPAM	PD160/4BSAM	3P + \neq	15A	230-400VAC	2 x M25	95L x 70D
PD160/5PAMN	PD160/5SAM	4P + \neq	15A	230-400VAC	2 x M25	95L x 70D

Round Type - 30A

PD30/4PAMN	PD930/4SAM	3P + \neq	30A	230-400VAC	2 x M25	95L x 78D
------------	------------	-------------	-----	------------	---------	-----------



Socket



Plug



Watertight Metal Clad Switches with Round Body

Code	No. of Ways	Poles	Current Rating	Voltage	Entries	Dimensions (mm)
PD145AM	1 Way	1P	10A	230-400VAC	2 x M25	98H x 85L x 70D
PD145/2AM	2 Way	2P	10A	230-400VAC	2 x M25	98H x 85L x 70D
PD219AM	1 Way	1P	20A	230-400VAC	2 x M25	98H x 85L x 70D
PD219/2AM	2 Way	2P	20A	230-400VAC	2 x M25	98H x 85L x 70D



PD145AM



NEW

TAIS-EX SERIES- INTERLOCKED SOCKET-OUTLET

Zone: 2,21,22

See item datasheet for model specific EX Ratings



467126EX

Female Switched Sockets - In Thermosetting (GRP) with mechanical interlock, for wall mounting IP66

Amps (AC23A)	Rated Voltage	Poles	h. ref.	Code	Terminal Capacity	Entry
16A	230V	2P + \equiv	6	467126EX	1-10mm ²	M25
	400V	3P + \equiv	6	467136EX	1-10mm ²	M25
		3P + N + \equiv	6	467146EX	1-10mm ²	M25
32A	500V	3P + \equiv	7	467137EX	1-10mm ²	M25
	230V	2P + \equiv	6	470226EX	1-10mm ²	M32
		400V	3P + \equiv	6	470236EX	1-10mm ²
3P + N + \equiv	6		470246EX	1-10mm ²	M32	
63A	500V	3P + \equiv	7	467237EX	1-10mm ²	M32
	400V	3P + \equiv	6	470336EX	6-16mm ²	M40
		3P + N + \equiv	6	470346EX	6-16mm ²	M40
	500V	3P + \equiv	7	467337EX	6-16mm ²	M40

NEW

XCEE-EX SERIES - PLUGS

Zone: 2, 21, 22

See item datasheet for specific EX Ratings

The XCEE-EX casing, made of carbon-fibre-reinforced technopolymer, prevents the build-up of electrostatic charges, thus preventing the ignition of explosive gas, vapour or dust atmospheres.



760137EX

Male Plugs - with cable gland IP66

Amps	Rated Voltage	Poles	h. ref.	Code	Terminal Capacity
16A	230V	2P + \equiv	6	760126EX	1-10mm ²
	400V	3P + \equiv	6	760136EX	1-10mm ²
		3P + N + \equiv	6	760146EX	1-10mm ²
32A	500V	3P + \equiv	7	760137EX	1-10mm ²
	230V	2P + \equiv	6	760226EX	1-10mm ²
		400V	3P + \equiv	6	760236EX
3P + N + \equiv	6		760246EX	1-10mm ²	
63A	500V	3P + \equiv	7	760237EX	1-10mm ²
	400V	3P + \equiv	6	760336EX	16-25mm ²
		3P + N + \equiv	6	760346EX	16-25mm ²
	500V	3P + \equiv	7	760337EX	16-25mm ²

WHILE STOCKS LAST

CEE-EX SERIES - PLUGS

Zone: 2, 21, 22

See item datasheet for specific EX Ratings



16A
32A

63A

Male Plugs - with cable gland IP66

Amps	Rated Voltage	Poles	h. ref.	Code	Terminal Capacity
16A	230V	2P + \equiv	6	477303EX	1-4mm ²
	400V	3P + \equiv	6	477413EX	1-4mm ²
		3P + N + \equiv	6	477423EX	1-4mm ²
32A	500V	3P + \equiv	7	477513EX	1-4mm ²
	230V	2P + \equiv	6	477306EX	2.5-10mm ²
		400V	3P + \equiv	6	477416EX
3P + N + \equiv	6		477426EX	2.5-10mm ²	
63A	500V	3P + \equiv	7	477516EX	2.5-10mm ²
	400V	3P + \equiv	6	477417EX	4-16mm ²
		3P + N + \equiv	6	477427EX	4-16mm ²
	500V	3P + \equiv	7	477517EX	4-16mm ²

HAZARDOUS AREAS & MINING

TAIS MIGNON-EX SERIES - SMALL DEVICES

Ex nR IIC T6 Gc
Ex tc IIIC T70°C Dc
Zone: 2, 21, 22



202271EX
202282EX
202276EX



202275EX



261435EX



261432EX



261433EX

Switches - in thermosetting (GRP), for wall mounting, c/w cable glands/blanking plugs **IP66**

Code	202271EX	202282EX	202275EX	202276EX
Electrical Scheme	1P (1 Lever)	2P (1 Lever)	2 x 1P (2 Lever)	1CO (1 Lever)
Entry Type	1 x M20 (Top)	2 x M20 (Top, Bottom)	1 x M20 (Top)	1 x M20 (Top)
Rated Current/Voltage	16A/250VAC, 10A/400VAC			

Pushbuttons - in thermosetting (GRP), for wall mounting, c/w cable glands/blanking plugs **IP66**

Code	261435EX	261445EX
Contact Configuration	1NO	1NC
Entry Type	1 x M20 (Top)	
Rated Voltage	10A/400VAC	

Pushbutton Panel - in thermosetting (GRP), for wall mounting, c/w cable glands/blanking plugs **IP66**

Code	261432EX	261433EX
Function	Start/Stop	On/Off
Entry Type	1 x M20 (Top)	
Rated Voltage	10A/400VAC	

CAM-EX SERIES - ENCLOSED ROTARY SWITCHES

Ex nR IIC T6 Gc
Ex tb IIIC T70°C Db
Zone: 2, 21, 22



Isolator
Switch



Selector
Switch

* Protection Rating: **IP65**

Isolator Switches - In aluminium alloy for wall mounting, c/w cable glands **IP66/67**

Code	No. of Poles	Rated Current	AC23A @400V	Entry Type	Terminal Capacity	Size (mm) W x H x D
272241EX	2	25A	12kW	2 x M25 (Top/Bottom)	1 - 10m ²	92 x 138 x 102
272242EX	3	25A	12kW	2 x M25 (Top/Bottom)	1 - 10m ²	92 x 138 x 102
272243EX	4	25A	12kW	2 x M25 (Top/Bottom)	1 - 10m ²	92 x 138 x 102
272244EX	6	25A	12kW	2 x M25 / 2 x M25 (Top/Bottom)	1 - 10m ²	125 x 185 x 148
272302EX	3	40A	19kW	2 x M32 (Top/Bottom)	4 - 10m ²	125 x 232 x 137
272303EX	4	40A	19kW	2 x M32 (Top/Bottom)	4 - 10m ²	125 x 232 x 137
272304EX	6	40A	19kW	2 x M32 / 2 x M32 (Top/Bottom)	4 - 10m ²	125 x 292 x 148
282402EX	3	63A - Zone 21-22 50A - Zone 2	34kW	2 x M32 (Top/Bottom)	6 - 16m ²	125 x 292 x 148
282403EX	4		34kW	2 x M32 (Top/Bottom)	6 - 16m ²	125 x 292 x 148
282404EX	6		34kW	2 x M32 / 2 x M32 (Top/Bottom)	6 - 16m ²	125 x 292 x 168

Selector Switches - In aluminium alloy for wall mounting, c/w cable glands **IP66/67**

Code	No. of Poles	Rated Current	AC23A @400V	Entry Type	Terminal Capacity	Size (mm) W x H x D
272246EX	3	25A	12kW	1 x M25 / 2 x M25 (Top/Bottom)	1 - 10m ²	125 x 232 x 148
272247EX	4	25A	12kW	1 x M25 / 2 x M25 (Top/Bottom)	1 - 10m ²	125 x 232 x 148
282406EX	3	50A	34kW	1 x M32 / 2 x M32 (Top/Bottom)	6 - 16m ²	125 x 292 x 168
282407EX*	4	50A	34kW	1 x M32 / 2 x M32 (Top/Bottom)	6 - 16m ²	185 x 359 x 190

UNI-EX SERIES ADAPTORS

Ex d IIC
Ex e IIC
Ex tb IIIC
Zone: 1, 2,
21, 22



580361EX

Adaptors - in Galvanised Steel for Conduit/Box Coupling **IP67**

Code	Male Thread	Female Thread
Gas/Metric		
580360EX	3/8" Gas	M16 x 1.5
580361EX	1/2" Gas	M20 x 1.5
580364EX	3/4" Gas	M25 x 1.5
580365EX	1" Gas	M32 x 1.5
PG/Metric		
580394EX	PG21	M25 x 1.5
580395EX	PG29	M32 x 1.5
580396EX	PG36	M40 x 1.5

ALARM-EX SERIES - SIRENS & BELLS



900473EX

Siren - In aluminium alloy, with vibrating membrane c/w cable gland **IP66**

Code	Sound Level	Starting Power	Running Power
900473EX	105dB	60VA	25VA

Accessories

Code	Description
900449EX	Directional Horn - Ø112 x 238mm

Ex nA IIC T3 Gc
Ex tb IIIC T65°C Db
Zone: 2, 21, 22



900449EX



900273EX

Bell - In aluminium alloy, with steel drum c/w cable gland **IP55**

Code	Sound Level	Starting Power	Running Power
900273EX	101dB	13VA	11VA

Ex nA IIC T3 Gc
Ex tc IIIB T65°C Dc
Zone: 2, 22

ALUPRES-EX SERIES - INTERLOCKED SOCKET OUTLET

Zone: 2, 21, 22

Female Switched Sockets c/w Fuses - in aluminium alloy with mechanical interlock, for wall mounting IP66

See item datasheet for specific EX Ratings



465137EX



466126EX

Amps (AC23A)	Rated Voltage	Poles	h. ref.	Code	Terminal Capacity	Entry	Fuses
16A	500V	3P + \perp	7	465137EX	1-10m ²	M25 (Top)	10.3 x 38
32A		3P + \perp	7	472546EX	1-10m ²	M32 (Top)	14 x 51
63A		3P + \perp	7	472547EX	6-16m ²	M32 (Top)	22 x 58

Female Switched Sockets - in aluminium alloy with mechanical interlock, for wall mounting IP66

Amps	Rated Voltage	Poles	h. ref.	Code	Terminal Capacity	Entry	Fuses
16A	230V	2P + \perp	6	466126EX	1-10m ²	M25 (Top)	-
	400V	3P + \perp	6	466136EX	1-10m ²	M25 (Top)	-
		3P + N + \perp	6	466146EX	1-10m ²	M25 (Top)	-
32A	230V	2P + \perp	6	460226EX	1-10m ²	M32 (Top)	-
	400V	3P + \perp	6	460236EX	1-10m ²	M32 (Top)	-
		3P + N + \perp	6	460246EX	1-10m ²	M32 (Top)	-
63A	400V	3P + \perp	6	460336EX	6-16m ²	M32 (Top)	-
		3P + N + \perp	6	460346EX	6-16m ²	M32 (Top)	-

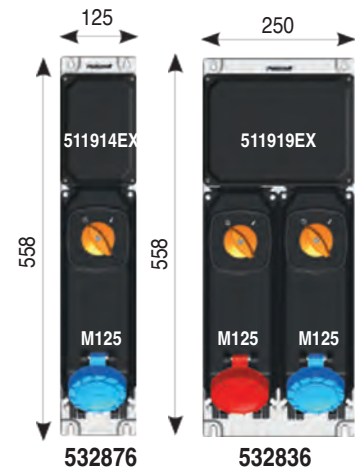
Boxes - Aluminium alloy with blind cover for composition of socket boards IP66

Config of Alupres Sockets & Acc.



511914EX

Code	Max. Power Dissipation allowed (W)		Window Type	External Size mm
	Gas	Dust		
511914EX	13	20	2 x F1 (Top / Bottom)	125 x 125
511919EX	25	40	F2 (Top), 2 x F1 (Bottom)	252 x 125



Mounting Plates - Painted Steel



532876

Code	Installable Devices	External Size mm
532876	1	125 x 558
532836	2	250 x 558

ALUPRES-EX SERIES - JUNCTION BOXES

Ex eb IIC Gb
Ex tb IIIC Db
Zone: 2, 21, 22



511914EX



511912EX



541055EX

Junction Boxes - in aluminium alloy with blind walls and back plate IP66

Code	Max power dissipation allowed (W)	Ext. Size (mm)
511913EX	20	125 x 125 x 113
511920EX	40	185 x 185 x 145
511921EX	42	252 x 185 x 145

Junction Boxes - in aluminium alloy with windowed walls and back plate IP66

Code	Max power dissipation allowed (W)	Window Type	Ext. Size (mm)
511911EX	12	2 x F0 (Top/Bottom)	125 x 92 x 77
511912EX	23	2 x F0 (Top/Bottom)	185 x 92 x 77
511917EX	40	2 x F1 (Top/Bottom)	252 x 125 x 113
511922EX	45	4 x F3	220 x 220 x 108
511923EX	65	2 x F5 (Top/Bottom)	252 x 252 x 197

Flange - in aluminium alloy with metric threading for windowed boxes IP67

Code	For Windows	Threading Type	Projection
541050EX	F0	M25 x 1.5	18mm
541055EX	F1	M25 x 1.5	18mm
540180EX	F1	M32 x 1.5	51mm
540185EX	F2	M32 x 1.5	51mm
540186EX	F2	M40 x 1.5	51mm
540190EX	F3	M40 x 1.5	51mm
540195EX	F5	M50 x 1.5	51mm

RINO-EX SERIES - HEAVY DUTY FITTINGS

Watertight lighting fixtures in stainless steel AISI 304 suitable for applications in areas at risk of explosive atmospheres as defined in ATEX Directive 2014/34/UE. The diffuser is in tempered glass. The fixing hooks are in stainless steel AISI 304. The sealing is guaranteed by a reinforced gasket in non-ageing elastomer. Complete with corrosion resistant non-loosening terminals and non-sparking lampholder. Complete with internal and external earth connection. See Shortform for table of chemical resistance.

RinoLED-EX Series - Zone: 1, 2, 21, 22

Standard On/Off
Stainless Steel-Glass
Wide Beam **IP65/66**
Colour Temp: 4000K
Ex tb IIIC T85°C Db
Ex eb mb IIC T5 Gb

NEW



821172EX

Code	Wattage	Lumens	Switch Gear	Size (mm)
821172EX	24W	3400lm	Electronic	690 x 200 x 110
821572EX	46W	6831lm	Electronic	1300 x 200 x 110

RinoLED-EX Series - Zone: 2, 21, 22

Standard On/Off
Stainless Steel-Glass
Wide Beam **IP65/66**
Colour Temp: 4000K
Ex tb IIIC T85°C Db
Ex eb mc IIC T5 Gc

NEW

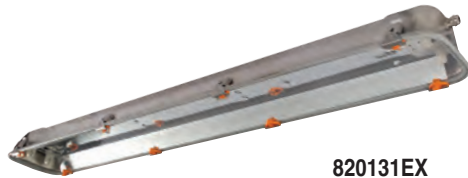


821192EX

Code	Wattage	Lumens	Switch Gear	Size (mm)
821192EX	26W	3562lm	Electronic	690 x 200 x 110
821392EX	52W	7072lm	Electronic	1300 x 200 x 110

Lighting Fixtures for Fluorescent Lamps - Zone: 2, 21, 22

Stainless Steel/Glass -
with symmetrical
reflector **IP66**
Ex nA IIC T4 Gc
Ex tb IIIC T85°C Db



820131EX

Code	Wattage	Switch Gear	Size (mm)
820131EX	1 x 18W	Electronic	690 x 200 x 110
820231EX	1 x 36W	Electronic	1300 x 200 x 110
820331EX	1 x 58W	Electronic	1600 x 200 x 110
820132EX	2 x 18W	Electronic	690 x 200 x 110
820232EX	2 x 36W	Electronic	1300 x 200 x 110
820332EX	2 x 58W	Electronic	1600 x 200 x 110
820111EX	2 x 18W	*Emg. (1 Hour)	690 x 200 x 110
820211EX	2 x 36W	*Emg. (1 Hour)	1300 x 200 x 110
820311EX	2 x 58W	*Emg. (1 Hour)	1600 x 200 x 110

Lighting Fixtures for Fluorescent Lamps - Zone: 1, 2, 21, 22

Stainless Steel/Glass -
with symmetrical
reflector **IP66**
Ex e mb IIC T4 Gb
Ex tb IIIC T70°C Db



822281EX

Code	Wattage	Switch Gear	Size (mm)
822181EX	1 x 18W	Electronic	690 x 200 x 110
822281EX	1 x 36W	Electronic	1300 x 200 x 110
822182EX	2 x 18W	Electronic	690 x 200 x 110
822282EX	2 x 36W	Electronic	1300 x 200 x 110

LED Rino EX Series - Zone 2, 22

Stainless Steel/Glass -
Extra Wide Beam **IP66**
Colour Temp: 4000K
Ex nR IIC T6 Gc
Ex tc IIIC T 70°C Dc



822142EX

Code	Wattage	Lumens	Switch Gear	Size (mm)
822142EX	24W	3300lm	Electronic	690 x 200 x 110
822242EX	38W	5600lm	Electronic	1300 x 200 x 110
822342EX	44W	6500lm	Electronic	1600 x 200 x 110
822140EX	19W	2750lm	*Emg. (1 Hour)	690 x 200 x 110

* 1 Lamp Emergency Only

Accessories



Code	Description
820001	Stainless Steel Hooks
820000	Stainless Steel Swiveling Supports
820006	Stainless Steel Pipe Mounting Collars (Ø60mm max.)

RINO-EX SERIES - BULKHEAD FITTINGS

Oval Bulkhead Lamps

In aluminium alloy with steel protective cage
c/w cable gland **IP65**

Code	Lamp Power	Lamp Type	Dimensions (mm)
831172EX	28W max.	E27	226(L) x 130(W)

Ex nA IIC T 145/160/190 °C (T3) Gc
Ex tb IIIC T 75/85/90 °C Db
Zone: 2, 21, 22



831172EX

Round Bulkhead Lamps

In aluminium alloy with steel protective cage
c/w cable gland **IP65**

Code	Lamp Power	Lamp Type	Dimensions (mm)
830072EX	28W max.	E27	200(L) x Ø182

Ex nA IIC T 145/160/190 °C (T3) Gc
Ex tb IIIC T75/85/90 °C Db
Zone: 22



830072EX

RINO SERIES - LIGHTING FIXTURES

Heavy Duty Fixtures for Fluorescent Lamps

Stainless Steel/Glass - c/w White Reflector IP66



822331

Code	Lamp Wattage	Switchgear	Size (mm)
822131	1 x 18W	Electronic	690 x 200 x 110
822231	1 x 36W	Electronic	1300 x 200 x 110
822331	1 x 58W	Electronic	1600 x 200 x 110
822132	2 x 18W	Electronic	690 x 200 x 110
822232	2 x 36W	Electronic	1300 x 200 x 110
822332	2 x 58W	Electronic	1600 x 200 x 110
822211	2 x 36W	*Emg. (1 Hour)	1300 x 200 x 110

* 1 Lamp Emergency Only

Heavy Duty Fixtures for Fluorescent Lamps

Stainless Steel/Polycarbonate - c/w Aluminium Symmetrical Reflector IP66



825332

Code	Lamp Wattage	Switchgear	Size (mm)
825132	2 x 18W	Electronic	690 x 200 x 110
825232	2 x 36W	Electronic	1300 x 200 x 110
825332	2 x 58W	Electronic	1600 x 200 x 110
825111	2 x 18W	*Emg. (1 Hour)	690 x 200 x 110
825211	2 x 36W	*Emg. (1 Hour)	1300 x 200 x 110
825311	2 x 58W	*Emg. (1 Hour)	1600 x 200 x 110

* 1 Lamp Emergency Only

RINO SERIES - MARINE FLUORESCENT FITTINGS



Lighting Fixtures - Painted Stainless Steel with Opaline Polycarbonate Diffuser IP66

Code	Switch Gear	Lamp Wattage
878132	Electronic	2 x 18W
878232	Electronic	2 x 36W
878111	Emergency	(1 + 1) x 18W
878211	Emergency	(1 + 1) x 36W

Equipment Included

- 2 x Terminal Blocks
- 2 x M20 Nickel Plated Brass Cable Glands
- Kit for Ceiling Fixing

NAVE SERIES - MARINE PRODUCTS IP66

Bell UNAV 1384 - In Painted Brass with UNAV 1948 Cable Gland



Code	Rated Voltage	Bell Ø (mm)	1m Sound Level	Power
900375	230VAC	105	101dB	13VA Starting 11VA Running

Duty Cycle: 4 Hours On, 1 Hour Off

Switches UNAV 2162 - In Painted Brass with UNAV 1948 Cable Glands



Code	Rated Current	Poles	Cable Glands
------	---------------	-------	--------------

One-Way Switches

232626	10A	1	2 (Top)
232627	10A	2	2 (Top)

Two-Way Switches

232628	10A	2	2 (Top)
--------	-----	---	---------

Sirens UNAV 1382 - In Painted Brass with UNAV 1948 Cable Gland



Code	Rated Voltage	1m Sound Level	Power
900573	230VAC	107/105dB	13VA Starting 11VA Running

Accessories

Code	Description
900548	Directional Horn Ø112 x 238mm

Bulkhead UNAV 2135 - In Painted Brass with Glass Diffuser & UNAV 1948 Cable Gland



831289

Code	Max Power	Lamp Type	Size (mm)
831289	100W	E27	295x170x127

Accessories

Code	Description
831727	Protective Cage in Stainless Steel



831727

TIGUA LED RANGE IP66

TIGUA LED, the new area lighting solution by Palazzoli, is the best solution for lighting facades, signs, commercial spaces, sport centers, industrial sites and green areas. The body is made of EN44300 die-cast aluminum alloy with a low content of copper and with an anti-corrosion treatment for maximum corrosion resistance even in harsh environments. Application specific optics available on request.



817016

Professional LED Floodlights - Symmetrical Light Distribution, Extra Wide Beam | Rated Voltage: 220-240VAC

Code	Power	Lumens	Colour Temp	Size (mm)
817008	67W	9250lm	4000K	440 x 288 x 65
817012	99W	13875lm	4000K	440 x 288 x 65
817016	132W	18500lm	4000K	440 x 288 x 65
817020	164W	23125lm	4000K	440 x 288 x 65
817024	196W	27750lm	4000K	440 x 288 x 65



837011

Professional LED Floodlights - With Standard on-off control system and Symmetrical wide comfort 81° optics Rated Voltage: 220-240VAC

Code	Power	Lumens	Colour Temp	Size (mm)
837011	48W	5835lm	4000K	288 x 583 x 65
837012	95W	11670lm	4000K	288 x 583 x 65
837013	130W	16141lm	4000K	288 x 583 x 65
837025	188W	22900lm	4000K	288 x 583 x 65

Features

- Including bracket for wall mounting
- Impact Resistance: IK08
- Flicker Free
- Electrical Supply easily connected via rapid connector
- c/w Built-in Surge Protection
- Corrosion Resistant



817024EX

Tigua-EX Floodlights ATEX Zones 1,2,21,22 - With DALI control system/Dimming and Symmetrical wide comfort 81° optics | Rated Voltage: 110-277VAC/110-250VDC

Code	Power	Lumens	Colour Temp	Size (mm)
817021EX	47W	5808lm	4000K	288 x 583 x 65
817022EX	73W	8280lm	4000K	288 x 583 x 65
817023EX	89W	11615lm	4000K	288 x 583 x 65
817024EX	141W	16560lm	4000K	288 x 583 x 65

Features

- Including bracket for wall mounting
- Impact Resistance: IK08
- Flicker Free
- c/w Built-in Surge Protection
- Corrosion Resistant
- Supplied with Terminal Block & M20 Cable Gland



811916

811919

811908

811912

C054345

Mounting Brackets - Galvanised Steel

Code	Description
811919	Support Bracket for 0 - 90°C Adjustable Double Chain Suspension
811916	Support Bracket for Ceiling Mounting
811908	Universal Spigot Adaptor for Pole-Head Fixing for Ø60mm and Ø76mm, Powder Coated
811912	Kit Composed of Collar and Plate for Fixing on Ø60mm to Ø80mm Pole
C054345	Anti-Vibration Bracket



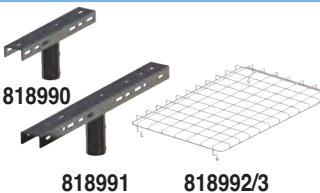
NEW

X-Tigua Professional LED Floodlights - With DALI control system/Dimming and Symmetrical wide comfort 81° optics | Rated Voltage: 220-240VAC/DC

Code	Power	Lumens	Colour Temp	Size (mm)
838036DA	236W	31388lm	4000K	497 x 475 x 78 (Size M)
838048DA	309W	41097lm	4000K	497 x 475 x 78 (Size M)
838060DA	368W	48944lm	4000K	814 x 452 x 48 (Size L)
838072DA	442W	59228lm	4000K	814 x 452 x 48 (Size L)

Features

- Including bracket for wall mounting
- Impact Resistance: IK08
- Flicker Free
- c/w Built-in Surge Protection
- Corrosion Resistant
- CRI≥70



818990

818991

818992/3

Accessories - Galvanised Steel

Code	Description	Light Fixture Size
818990	Cross beam for pole top mounting 1 or 2 X-Tigua Floodlights	M, L
818991	Cross beam for pole top mounting 2 or 4 X-Tigua Floodlights	M, L
818992	Protection grid for X-Tigua Floodlights	M
818993	Protection grid for X-Tigua Floodlights	L

* Other Optics available on request

MITO LED RANGE IP66/67

Palazzoli

MITO LED guarantees the lighting performance of installations in industry, food preparation, sport centres and external areas. The die cast aluminium body is treated to prevent corrosion and the 4mm extra clear tempered glass diffuser ensures maximum resistance to chemical substances. Application specific optics available on request.

Ex to IIIC T100°C Dc
Zone: 22

High Bay LED Lighting Fixtures ATEX Zone 22 - Dimmable

With glass diffuser and symmetrical light distribution extra wide beam (110°)



Code	Power	Lumens	Colour Temp	Dimming Voltage	Supply Voltage	Size (mm)
810090EX	99W	13230lm	4000K	1-10V	200-240VAC	Ø476 x 225
810020EX	133W	17640lm	4000K	1-10V	200-240VAC	Ø476 x 225
810050EX	168W	22050lm	4000K	1-10V	200-240VAC	Ø476 x 225
810080EX	199W	26460lm	4000K	1-10V	200-240VAC	Ø476 x 225

Features

- IK08 Resistance to Impacts
- Electrical Supply easily connected via rapid connector
- c/w Built-in Surge Protection
- 4mm Tempered Glass
- Die cast Aluminium Body treated to prevent corrosion
- Pendant Suspension support incl.

High Bay LED Lighting Fixtures - Dimmable

With glass diffuser and symmetrical light distribution extra wide beam (110°)



Code	Power	Lumens	Colour Temp	Dimming Voltage	Supply Voltage	Size (mm)
810090	99W	13230lm	4000K	1-10V	200-240VAC	Ø476 x 225
810020	133W	17640lm	4000K	1-10V	200-240VAC	Ø476 x 225
810050	168W	22050lm	4000K	1-10V	200-240VAC	Ø476 x 225
810080	199W	26460lm	4000K	1-10V	200-240VAC	Ø476 x 225

Features

- IK08 Resistance to Impacts
- Electrical Supply easily connected via rapid connector
- c/w Built-in Surge Protection
- Flicker Free
- Die cast Aluminium Body treated to prevent corrosion.
- Pendant Suspension support incl.

Mounting Brackets - Galvanised Steel



Code	Description
810997	Support brackets for double chain suspension and cable tray suspension
810996	Support bracket for 0-90° adjustable double chain suspension & for cable tray suspension
810998	Support bracket for ceiling mounting
810994	Support for mounting on catenary wire 0 - 90° adjustable

NEW

UNDERGROUND STRIP LIGHTS IP65

Heavy Duty LED Strip Light - For Industrial Applications. Uses the latest patented technology. Each segment works individually, ensuring lower working temperature, higher reliability.



Code	Voltage	Lumens	Wattage	Min Cutting Length	Power	
					One End	Both Ends
YGH3-A-24V	24VDC	>1500Lm	13.6W/m	62.5mm	20M	40M
YGH3-A-48V	48VDC	>1500Lm	13.6W/m	125mm	30M	60M
YGH3-A-110V	110VAC	>1500Lm	15.6W/m	125mm	50M	-
YGH3-A-230V	230VAC	>1500Lm	15.6W/m	166mm	100M	-
YGH3-U-230V	230VAC	>1800Lm	18.6W/m	166mm	100M	-

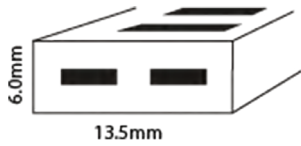
Price per meter | Colour Temperature: 6000K



Industrial Strip Lighting Accessories - Individual Components

Code	YG01-MC	YG01-EC	YG01-FC	YG01-FCC	YG01-MCC	YG01-TCC	SP112F
Description	Middle Connector	End Cap	Front Connector	Female Supply Connector Cable	Male Strip Connector Cable	T Connector Cable	Glue
						Clips Pack of 10	

UNDERGROUND LIGHTING SOLUTIONS **IP68**



Code 36V	Code 24V	Lumen per meter	LED's per meter	Power per meter	Range fed from both sides	Min. Cutting Length (mm)
HALO-UL-60	HALO-UL-60-24V	1000lm	60	9W	35m	183 (11LED's)
Applications		Its versatility provides daylight conditions underground, ideal for haulages, refuge bays, conveyors and tipping areas				
HALO-UL-36	-	600lm	36	5.5W	55m	306 (11LED's)
Applications		Ideal where high bright conditions are required, commonly used at machine stations of conveyors				
HALO-UL-30	-	500lm	30	4.4W	65m	367 (11LED's)
Applications		Medium to high bright option, ideal for haulages and general tunnel lighting				

Accessories

Code	Description
HALO-UL-CC	Connector Kit: L-connector, T-connector, 5x anti-skid clips, 5x PC cover, 5x heat shrink tube
HALO-UL-RK	Repair Kit: front connector, 3m lead & end cap
HALO-UL-IP68	IP68 Male/Female Connector kit for 24VDC System

Power Supplies - Input 85-265VAC

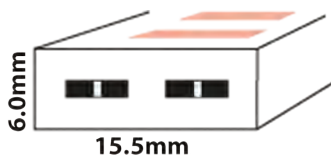


Code 36V	Code 24V	Description
HLG-60H-36A	HLG-60H-24A	60W Power Supply, Aluminium IP67
HLG-100H-36A	-	100W Power Supply, Aluminium IP67
HLG-200H-36A	-	200W Power Supply, Aluminium IP67
HLG-240H-36A	-	240W Power Supply, Aluminium IP67
HLG-320H-36A	-	320W Power Supply, Aluminium IP67

Enclosure

Code	Description
HALO-MC	Lockable vented metal enclosure for power controllers, complete with pre-drilled holes for cable entries

Halo Series Evacuation Pulse System **IP68**



Red Code	Green Code	Lumen per meter	LED's per meter	Power per meter	Range fed from both sides 24VDC
HALO-PS	HALO-PG	80lm	14	1W	100m

Applications

- Operating on high sight impact and not sound
- Perfect for machine operators with excellent visibility in smoke filled or low light conditions
- The Halo Series Evacuation Pulse System will:
 - Prevent your work force from entering dangerous environments
 - Bring order
 - Suppress panic and provide comfort in a stressed and dangerous environment.

Accessories

Code	Description
HALO-PS-CR	Pulsating controller & remote
HALO-PS-CC	Front Connector Kit for Pulsating Controller
HLG-60H-24A	24VDC, 60W Power Supply, Aluminium, IP67

NEW

CONSTRUCTION JOB SITE LIGHTING IP65

LED Work Light Strings - Colour Temp. 5000K

Code	Description	String Wattage	String Lumens	String Length	Max in Series
STL-R3-5-D*	5 Lamps - 3048mm Spacing	65W	8000LM	15m	6 Strings
STL-R3-10-D*	10 Lamps - 3048mm Spacing	130W	16000LM	30m	3 Strings
STL-F1-5-D*	5 Lamps - 3048mm Spacing	100W	12500LM	15m	6 Strings
STL-F1-10-D*	10 Lamps - 3048mm Spacing	200W	25000LM	30m	3 Strings

* Add Voltage to Code: **110VAC, 230VAC**

Features

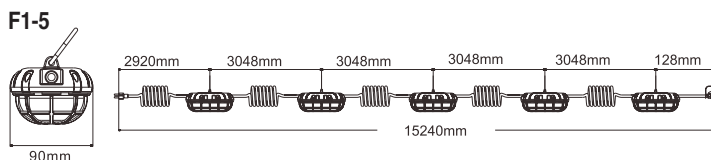
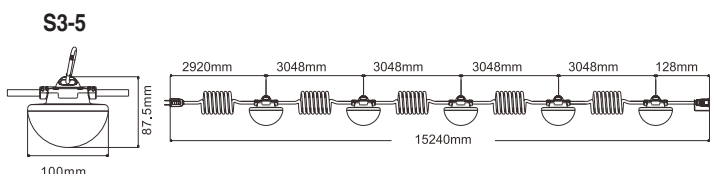
- LED temporary jobsite lights allow you to illuminate large areas such as tunnels, construction sites, parking areas, garages, docks, and other work areas.
- Aluminum and polycarbonate construction
- Yellow power cord for increased visibility and safety
- Aluminum carabiner on each lamp for quick mounting
- Operating temperature of -20°– 45°C



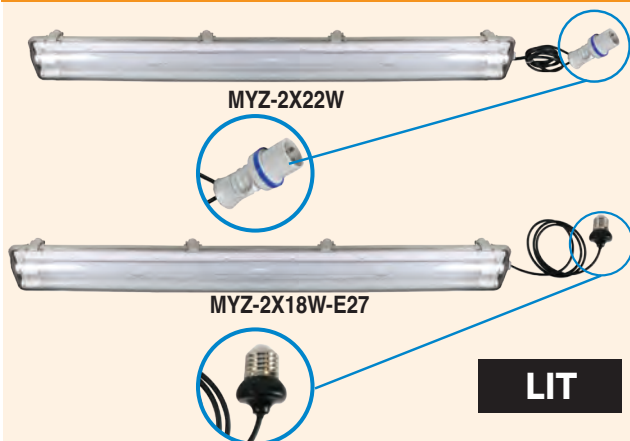
S3



F1



LED T8 WEATHERPROOF FITTING IP65 - MINING



Input Voltage: 85 - 265VAC | c/w LED Tubes 6000K (Daylight) | c/w 2 x Stainless Steel Clips & 2 x Hooks



2 Year Warranty

Codes c/w LED Tube	Wattage	Supplied with	Size (mm)
MYZ-2X22W	2 x 22W	1.5m Cable & 2P + E 16A Industrial Plug 2 x Daylight LED Tubes	1578 x 129 x 90
MYZ-2X18W-E27	2 x 18W	1.5m Cable & E27 Lamp Holder	1278 x 129 x 90

- For LED tubes see page ??
- For Emergency, Replace One Tube with Emergency type on page ??

NEW

ENERGIZER ATEX TORCHES IP67

- CE0539(EX Symbol) | M1 II 1G Ex ia op is I/II C T4
- Ribbed casing for a secure grip
- Antistatic push-button switch
- Shatterproof lens



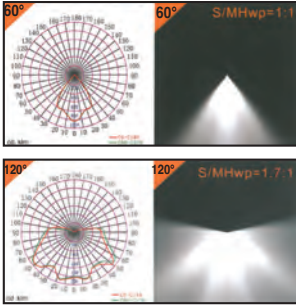
Code	EL-ATEX-2AA	EL-ATEX-2D	EL-ATEX-HL-3AAA
Lumens	150lm	150lm	130lm
Working Time	Up to 12h	Up to 65h	Up to 6h
Effective Distance	175m	175m	45m
Batteries	2x AA (not incl.)	2x D (not incl.)	3x AAA (not incl.)

Note: FLP Discounts Apply

EXPLOSION PROOF LIGHTING IP67



Ex d IIB T5/T6 Gb
Ex d IIIC T95°C T80°C Db



Mid-Power LED Light IP66

- Osram LED & high efficiency drivers
- Suitable for harsh and corrosive environments -40 to 55°C
- Robust Aluminium enclosure and tempered glass
- Group IIB Zone 1

Code	Supply	Power	Colour Temp.	Lumen	Beam	Weight (kg)	Size (mm)
EX-KF120H4V4CH	180-277VAC	120W	6000-7100K	11500lm	60°	13.5	426x410x187
EX-KF120H6V6CH	180-277VAC	120W	6000-7100K	11500lm	120°	13.5	426x410x187
EX-KF150H4V4CH	180-277VAC	150W	6000-7100K	14400lm	60°	13.5	426x410x187
EX-KF150H6V6CH	180-277VAC	150W	6000-7100K	14400lm	120°	13.5	426x410x187

Accessories



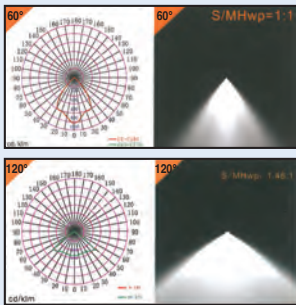
Code	Description	Weight (kg)
KHJ-03	Mounting Bracket	0.4
KHJ-12	Stanchion Bracket	2.26
SB209333/M12	Pendant Mount Eye Bolt M12	0.26
KHJ-11	Wire Guard	0.38

EXPLOSION PROOF LIGHTING

Ex nR II T4 Gc + Ex tc IIIC T4 Dc IP66



200W 80W



LED High Power Multi Purpose Light IP66

- Energy saving in strong Aluminium housing
- Powerful, accurate, anti glare, shock and vibration resistant
- Osram LED's and high efficiency drivers
- Used for area lighting in warehouses and petrochem sites -40 to 55°C
- Group II zone 2, Zone 22

Code	Supply	Power	Colour Temp.	Lumen	Beam	Weight (kg)	Size (mm)
EX-KPLB200H4CH	100-240VAC	200W	6000-7100K	20700	60°	16	400x400x161
EX-KPLB240H4CH	100-240VAC	240W	6000-7100K	24800	60°	21	500x400x161
EX-KPLB80H6CH	100-240VAC	80W	6000-7100K	8700	120°	9	210x400x161
EX-KPLB240H6CH	100-240VAC	240W	6000-7100K	24800	120°	21	500x400x161

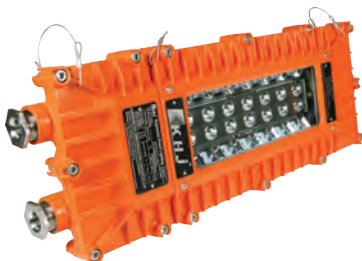
Accessories

Code	Description	Weight (kg)
KHJ-01	Pipe Clamp	0.4
KHJ-02-*	Stanchion Bracket	2.26
SB209333/M10	Pendant Mount Eye Bolt M10	0.26



* Add Bracket size to code: 80 (80-160W), 200 (200W), 250 (240W)

Ex d IIB T6 Gb



Robust Low Bay LED Lights IP66

- Osram LED's and high efficiency drivers
- High impact resistant enclosure, ideal for marine and corrosive environments -40 to 55°C
- For extremely corrosive, wet, dusty, hot and cold conditions
- Group II Zone 1, 2

Rectangular

Code	Supply	Power	Colour Temp.	Lumen	Beam	Weight (kg)	Size (mm)
EX-KAF30CH	100-240VAC	30W	6000-7100K	3000	120°	4.7	480x180x62

Accessories

Code	Description	Weight (kg)
KHJ-09	Mounting Bracket	0.4
KHJ-04	Pipe Clamp	0.27
KHJ-05	Wire Guard	0.1
SB209333/M10	Pendant Mount Eye Bolt M10	0.1





EXPLOSION PROOF LIGHTING

Ex de II BT3

WHILE STOCKS LAST



Flood Light 230V IP66 - Lamps excluded

Watts	Code High Pressure Sodium Lamp	Code Metal Halide Lamp	Code Empty Fitting	Lamp Holder
70W	BAT53-HSE70G	-	-	E27
100W	BAT53-HSE100G	-	-	E27
250W	BAT53-HSE250G	BAT53-HIE250G	-	E40
400W	-	BAT53-HIE400G	BAT53-EMPTY	E40

Description

ATEX: Group II category 2G
 Ideal for IIA, IIB locations
 Suitable for Zone 1, 2 and 21, 22 locations
 Aluminium reflector **IP66**
 Temperature Range: -25°C to +55°C

Material:
 Die cast aluminium alloy outer shell
 High pressure anti static plastic sprayed
 Silicon rubber seal, high grade anodic

Ex d II CT4

WHILE STOCKS LAST



BAD-A200X

BAD61

Bulkhead IP65 - Supply Voltage: 230VAC - Lamps excluded

Code	Watts	Lamp Type	Lamp Holder
BAD-A200X (empty fitting for use with a variety of lamps)	200W	Incandescent or	E27
	160W	Mercury Blended or	
	20W	Energy Saving CFL	
BAD61-HSE70X	70W	High Pressure Sodium. c/w ballast & ignitor	E27
BAD61-HSE100X	100W	High Pressure Sodium. c/w ballast & ignitor	E27

Description

ATEX: Group II 2G
 Ideal for IIA, IIB, IIC areas
 Suitable for Zone 1 and Zone 2 locations. (Certificate No. PTB 03 ATEX 1077)

Ex d II CT4

WHILE STOCKS LAST



BAD81-42X

BAD81-68X

Energy Saving Lighting IP65 - Supply Voltage: 230VAC. Lamps included. Suitable for ceiling mounting.

Code	Watts	Lamp Type	Lamp Holder
BAD81-42X	42W	Energy Saving CFL	E27
BAD81-68X	68W	Energy Saving CFL	E27

Description

Atex: Group II Category 2G
 Ideal for IIA, IIB, IIC areas
 Suitable for zone 1, 2 and 21, 22

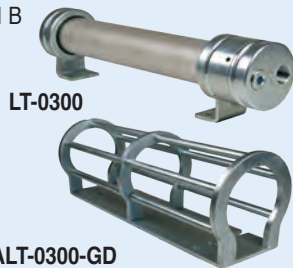


Accessories

Code	Description
81004	42W Spare lamp
81005	68W Spare lamp

Ex II2G Ex d I/II B

WHILE STOCKS LAST



LT-0300

ALT-0300-GD

LED Area Lights with Protection Brackets - c/w LED (Size is Body of Lamp)

Code Light	Code Guard	Description	Size (mm) Ø x L	Watts 110/220V	Watts 12/24V
LT-0300*	ALT-0300-GD	Area Light 300mm	141.5 x 300	28W	48W
LT-0600*	ALT-0600-GD	Area Light 600mm	141.5 x 600	56W	96W
LT-1200*	ALT-1200-GD	Area Light 1200mm	141.5 x 1200	112W	192W

* Add Voltage to Code: **12** (12/24VDC), **110** (110VAC), **220** (220VAC)

• Order light & guard separately

Ex d I/II B T6 Mb



Fluorescent

LED

Compact LED / Fluorescent Fitting - for Underground/Surface Areas

Code	Description	Watts	Lumens	Size (mm) Ø x L
LED				
EZE-0600*	22W Compact LED Fitting	22W	2700lm	113 x 435
Fluorescent				
EZEF-1500*	54W Fluorescent Fitting (5ft)	54W	5200lm	113 x 1971

* Add Voltage to Code: **12** (12VDC), **24** (24VAC/DC), **32** (32VAC), **110** (110VAC), **220** (220VAC)

EXPLOSION PROOF LIGHTING

Ex d IIC T6/T5 Gb
Ex t IIIC T80°C/T95°C Db IP66

HRD95 Series Explosion-Proof LED Light Fittings IP66 - 100-277VAC / 6000K



HRD95-160

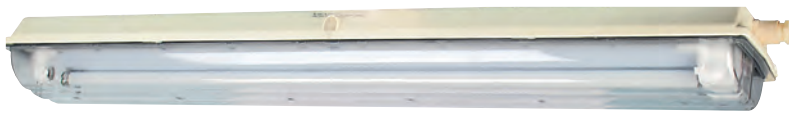
Code	Power	Size (mm)	Mounting	Lumen	Entries
HRD95-90-60X	60W	335 x 278Ø	Ceiling	6730lm	4 x (M25 x 1,5)
HRD95-90-90X	90W	335 x 278Ø	Ceiling	10120lm	4 x (M25 x 1,5)
HRD95-160-120X	120W	340 x 330Ø	Ceiling	13420lm	4 x (M25 x 1,5)
HRD95-160-160X	160W	340 x 330Ø	Ceiling	17930lm	4 x (M25 x 1,5)

- Toughened glass that can withstand 4J impact.
- Zone 1,2 and Zone 21, 22 For Gas/Oil industry and Hazardous Gas and dust areas.
- Certificates - DNV 12 ATEX 10807X, IECEx CQM 12.0009X

Fluorescent 230V - IP66 (Certificate No. S-XPL/04547)

ATEX: Group II category 2GD
Ideal for IIA, IIB, IIC locations
Suitable for Zone 1, 2 and 21, 22

Material: Polycarbonate diffuser
Full plastic body
Ex mark: Ex d e q IIC T4 Gb
Ex t IIIC T80°C Db IP66



Ballast for 2 x 36W



Ballast for 2 x 58W



Key

*** NB Note: For LED Zone 2,21 & 22 - Led Fitting complete with LED Tubes**

LED Fitting Mark: Ex nA IIC T5 Gc; Ex tb IIIC T80°C Db IP66

Accessories

Code (CFL) Ceiling Mount	Watts	Size (mm) L x W x D	Code (CFL) Emergency	* Code (LED) Ceiling Mount	Code	Description
BAY51-Q18X1X	1 x 18W (2FT)	780 x 196 x 128	BAY51-Q18X1X-EMG	BNY81-LED9X1X	5118002	Key for 18W BAY51 Fitting
BAY51-Q18X2X	2 x 18W (2FT)	780 x 196 x 128	BAY51-Q18X2X-EMG	BNY81-LED9X2X	5118004	Ballast EX. Proof for BAY51 18W
BAY51-Q36X1X	1 x 36W (4FT)	1380 x 222 x 134	BAY51-Q36X1X-EMG	BNY81-LED18X1X	5136004	Key for 36W BAY51 Fitting
BAY51-Q36X2X	2 x 36W (4FT)	1380 x 222 x 134	BAY51-Q36X2X-EMG	BNY81-LED18X2X	5136011	Ballast EX. Proof for BAY51 36W
BAY51-Q56X2X	2 x 58W (5FT)	1672 x 196 x 115	BAY51-Q56X2X-EMG	BNY81-LED28X2X		

(Lamps excluded.) See page ?? for spare lamps. Emergency duration 90min on one lamp.

Fluorescent 230V IP65

c/w Lamps



Description

ATEX: Group II category 2G Ideal for IIA, IIB, IIC locations suitable for Zone 1 and 2 Material: Aluminium body, glass lamp housing, stainless steel diffuser, carbon steel reflector

Ex mark: Ex d II C T6

Portable Explosion Proof Light IP65

c/w Battery



Description

Lamps included 6400k daylight
Rechargeable.
c/w wheels & 2 light levels selectable
Ex mark: Ex de II C T6

Code - Ceiling Mount	Watts	Size (mm) L x W x D	Code	BW3210
BAY51S-36X	1 x 36W	1470 x 130 x 130	Lamp Power	30W
BAY51D-72X	2 x 36W	1470 x 225 x 140	Battery Type	12Ah Sealed Lead acid
			Working Time	High: 16hrs/Low: 36hrs
			Material - Head/Battery Box	Aluminium Alloy/Aluminium Alloy

Ex d IIB T4

BAJ52 Series 40W LED-Emergency Light IP65

220 - 240VAC

Code	Size
BAJ52-20	340 x 300 x 125mm

Specifications

- 2 x 10W LED
- 6V, 6Ah NI-MH Batt.
- EMG Time 90min
- Charge Time 24H
- 2xM25 x 1.5 Entries
- Zone 1 & 2



- Toughened Glass
- Cable not included



c/w battery charger

Hand Lights & Torches - Zones 1 & 2

Code	Power Supply	Size (mm)	IP
BSX-60	≤100W (E27)	Ø138 x 433	IP65

- Ex II 2G Ex de II CT4
- Spare Glass: **BSX102**

Code	Power Supply	Size (mm)	IP
BAD-203	7.2V 2Ah Battery (incl.)	Ø40 x 208	IP68

- Ex II 2G Ex ib II CT6
- Spare Battery: **203-BAT**



5Year Warranty



NEW

EXPLOSION PROOF LED LIGHTS IP66

Explosion proof LED Flood Light for Zone 1 Zone 21 - IP66



Code	Supply	Power	Colour Temp.	Lumen	Weight (kg)	Size (mm)
CES-J40S	100-277V	40W	6500K	5200lm	4kg	200x200x147mm
CES-J60	100-277V	60W	6500K	7800lm	7.5kg	300x300 x165mm
CES-J80	100-277V	80W	6500K	10400lm	7.5kg	300x300x165mm
CES-J100	100-277V	100W	6500K	13000lm	7.5kg	300x300x165mm
CES-J120	100-277V	120W	6500K	15600lm	10.5kg	400x400x169mm
CES-J150	100-277V	150W	6500K	19500lm	10.5kg	400x400x169mm
CES-J200	100-277V	200W	6500K	23400lm	10.5kg	400x400x169mm

Features

- Industry-leading efficacy: up to 130lm/W±5
- -40°C to +55°C Ambient operating temperature
- Beam angle: 8°, 15°, 35°, 60°, 90°, 108°, 120°
- LED Driver: Meanwell HLG series
- EX II 2G Ex eb mb op is IIC T4 Gb
- Zone 1, 2, 21 and 22
- Lens – tempered glass
- Housing –Aluminum alloy
- Entry Size: M25X1.5 or NPT 3/4"-14
- EX II 2D Ex op is tb IIIC T95°C Db
- Certify No: IEP 19ATEX 0714
- Explosion Proof net Optional

Explosion proof LED Flood Light for Zone 1 Zone 21 - IP66

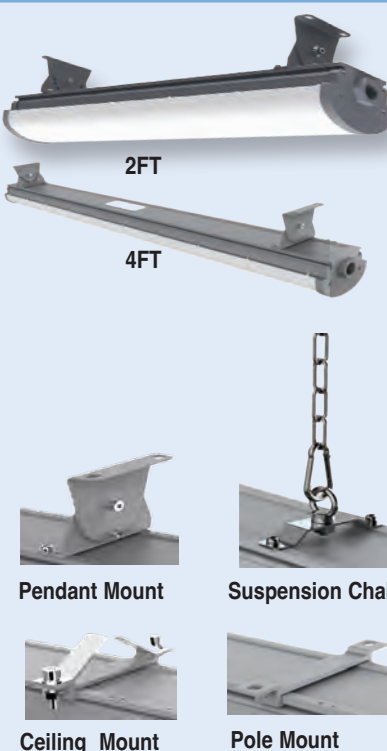


Code	Supply	Power	Colour Temp.	Lumen	Weight (kg)	Size (mm)
CES-EX-GB-02-40	100-277V	40W	6500K	5200lm	3kg	200x147mm
CES-EX-GB-02-80	100-277V	60W	6500K	10400lm	7kg	300x204mm
CES-EX-GB-02-100	100-277V	80W	6500K	13000lm	14.3kg	460x243mm
CES-EX-GB-02-150	100-277V	100W	6500K	19500lm	14.3kg	460x243mm
CES-EX-GB-02-200	100-277V	200W	6500K	26000lm	14.3kg	460x243mm

Features

- Industry-leading efficacy: up to 130lm/W±5
- -40°C to +50°C Ambient operating temperature
- LED Driver: Meanwell HLG series
- Class I, Division 2, Groups A, B, C and D
- Certify No: E475887
- Lens – tempered glass
- Housing –Aluminum alloy
- Entry Size: M25X1.5 or NPT 3/4"-14
- EX II 2D Ex op is tb IIIC T95°C Db
- Certify No: IEP 19ATEX 0714
- Explosion Proof net Optional

Explosion proof LED Flood Light for Zone 1 Zone 21 - IP66



Code	Supply	Power	Colour Temp.	Lumen	Weight (kg)	Size (mm)
CES-EX-LN-02P-20B	100-277V	20W	6500K	2600lm	3kg	625x125x169mm
CES-EX-LN-02P-40B	100-277V	40W	6500K	5200lm	3kg	625x125x169mm
CES-EX-LN-02P-40D	100-277V	40W	6500K	3900lm	5kg	1229x125x169mm
CES-EX-LN-02P-60D	100-277V	60W	6500K	7800lm	5kg	1229x125x169mm
CES-EX-LN-02P-80D	100-277V	80W	6500K	10400lm	5kg	1229x125x169mm

Features

- Industry-leading efficacy: up to 120lm/W±5
- -40°C to +45°C Ambient operating temperature
- LED Driver: High Efficiency Driver
- Zone 1, 2, 21 and 22
- Certify No: SEV 21 ATEX 0578 X
- Lens – PC Cover
- Housing –Aluminum alloy
- Entry Size: M25 x 1.5 or NPT 3/4"-14
- II 2G Ex eb mb IIC T5...T6 Gb
- Explosion Proof net Optional* Explosion

Extras Available

- Pendant Mounting
- Ceiling Mounting
- Suspension Chain Mounting* Ceiling
- Pole Mounting

HAZARDOUS AREAS & MINING

LED EXPLOSION PROOF LIGHTING

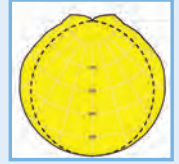
Ex eb mb op is IIC T4 Gb
Ex tb IIIC T67°C Db



Extra Ex LED Range IP66, Zone 1,21 - Supply: 110 - 254VAC / 220-250VDC

Code	Description	Power	Size (mm)	Lumen
V055290	EXTRA-Ex-LED-2500-218-4K	28W	670 x 155 x 105	2360lm
V055291	EXTRA-Ex-LED-5000-236-4K	55W	1280 x 155 x 105	4650lm
NEW V050610	EXTRA-Ex-LED-OP-4000-218-4K	28W	670 x 155 x 105	3139lm
NEW V050611	EXTRA-Ex-LED-OP-8000-236-4K	53W	1280 x 155 x 105	6561lm

- UV Stabilized Polycarbonate Housing & Diffuser
- IK10 Level of Impact Resistance
- Stainless Steel Clips & Mounting Brackets
- Operating Temp.: -20 to 50°C
- L80-B50 ta50 - 60000h
- c/w 1 x Gland, 3 x Sealing Plugs & Mounting Brackets
- Colour Temperature: 4000K



Ex db eb mb op is IIC T4 Gb
Ex tb IIIC T71°C Db



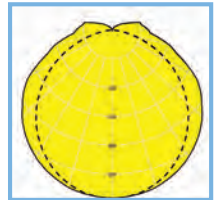
Extend Ex LED Range IP66, Zone 1,21 - Supply: 110 - 254VAC / 220 - 250VDC

Code	Description	Power	Size (mm)	Lumen
V054720	EXTEND-Ex-P-LED-D-2500-218-4K	28W	728 x 244 x 154	2307lm
V054721	EXTEND-Ex-P-LED-D-5000-236-4K	55W	1328 x 244 x 154	4454lm
NEW V053260	EXTEND-Ex-P-LED-D-4000-218-4K	28W	728 x 244 x 156	3158lm
NEW V053261	EXTEND-Ex-P-LED-D-8000-236-4K	53W	1328 x 244 x 156	6138lm

- Housing in Glass Reinforced Polyester (GRP) UV Stabilized
- Diffuser in UV Stabilized Polycarbonate
- IK10 Level of Impact Resistance
- c/w 1 x Gland, 3 x Sealing Plugs
- Operating Temp.: -20 to 50°C
- L80-B50 ta55 - 50000h
- Colour Temp.: 4000K

Accessories

Code	Description
V051200	Set of Ceiling Mounting Brackets
V053296	Set of Pole Mounting Brackets - Ø50mm



Ex db eb mb op is IIC T4 Gb
Ex tb IIIC T67°C Db



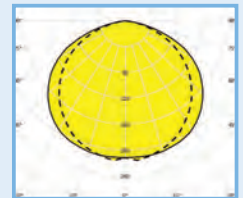
Pitbul Ex LED Range IP65, Zone 1,21 - Supply: 110-254VAC / 220-250VDC

Code	Description	Power	Size (mm)	Lumen
V053660	PITBUL-Ex-LED-D-2500-218-4K	28W	701 x 302 x 130	2200lm
V053662	PITBUL-Ex-LED-D-5000-236-4K	55W	1312 x 302 x 130	4400lm
V053661	PITBUL-Ex-LED-D-5000-418-4K	55W	701 x 362 x 130	4400lm
V053663	PITBUL-Ex-LED-D-2500-436-4K	103W	1312 x 362 x 130	8800lm
NEW V053700	PITBUL-Ex-LED-OP-D-4000-218-4K	30W	703 x 310 x 142	3373lm
NEW V053701	PITBUL-Ex-LED-OP-D-8000-418-4K	51W	703 x 369 x 142	6663lm
NEW V053702	PITBUL-Ex-LED-OP-D-8000-236-4K	53W	1313 x 310 x 142	6742lm
NEW V053703	PITBUL-Ex-LED-OP-D-16000-436-4K	102W	1313 x 369 x 142	13447lm

- White painted steel Housing & Tempered Safety Glass Diffuser
- Operating Temp.: -20 to 55°C
- Fitted with Disconnecter
- c/w 1 x Gland, 1 x Sealing Plug
- L80B50 ta55°C - 50000h
- L80B50 ta60°C - 50000h
- Colour Temperature: 4000K

Accessories

Code	Description
V054935	Set of Ceiling Mounting Brackets
V053940	Adjustable Mounting Bracket Set
V004642	Suspension Bracket M8 (1pc)
V051146	Pole Mounting Bracket - Ø50mm (1pc)



Ex db eb mb op is IIC T4 Gb
Ex tb op is IIIC T62°C Db



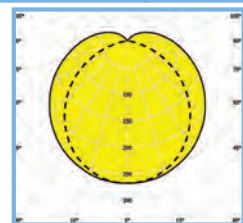
Aqua Ex LED Range IP68, Zone 1, 21 - Supply: 110-254VAC / 220-250VDC

Code	Description	Power	Size (mm)	Lumen
V084011	AQUA-70-Ex-LED-D-2500-118-4K	29W	1144 x 425 x 65	2389lm
V084012	AQUA-70-Ex-LED-D-5000-136-4K	52W	1755 x 478 x 65	4421lm
V084200	AQUA-70-Ex-LED-D-4000-118-4K	28W	1312 x 302 x 130	3061lm
V084201	AQUA-70-Ex-LED-D-8000-136-4K	51W	1312 x 362 x 130	5985lm

- Plastic tube with outer diameter of 70mm and wall thickness 4mm
- Housing in UV stabilised polycarbonate
- IK10 Level of Impact Resistance
- Operating Temperature: -20 to 55°C
- L80B10 ta40 - 70000h
- Colour Temperature: 4000K
- c/w 1 x Gland, 1 x Sealing Plug

Accessories

Code	Description
V053627	Stainless Steel Mounting Bracket (1pc)





LED EXPLOSION PROOF LIGHTING

Ex db mb op is IIC T4 Gb
Ex tb op is IIIC T59°C Db

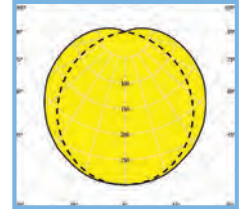
Rambo Ex LED Range IP67, Zone 1, 21 - Supply: 110-254VAC / 220-250VDC

Table with 5 columns: Code, Description, Power, Size (mm), Lumen. Rows include V084013, V084014, V084210, V084211.

- IK10 Level of Impact Resistance - Vandal proof
Housing in White Painted Steel
Diffuser in UV Stabilized Polycarbonate (4mm Thick)
Operating Temp.: -20 to 45°C
Colour Temperature: 4000K
L80B10 ta30 - 70000h
L70B10 ta30 - 100000h
c/w 1 x Gland, 3 x Sealing Plug
Mounting Bracket

Accessories

Table with 2 columns: Code, Description. Row: V002020 RAMBO Safety Key

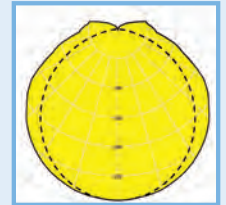


Ex nR IIC T6 Gc
Ex tc IIIC T62°C Dc

Extra N LED Range Zone 2, 22 IP66 - Supply: 220-240VAC/DC

Table with 5 columns: Code, Description, Power, Size (mm), Lumen. Rows include V055263, V055264, V055265, V055266, V055664, V055665, V055667, V055668.

- Housing and Diffuser in UV Stabilised Polycarbonate
Operating Temp.: -20 to 45°C
Stainless Steel Clips and Mounting Brackets
IK10 Level of Impact Resistance
L80B10 ta30 - 70000h
L70B10 ta30 - 100000h
Colour Temperature: 4000K
c/w 1 x Gland, 3 x Sealing Plugs & Mounting Brackets



Ex nR IIC T6 Gc
Ex tc IIIC T65°C Dc

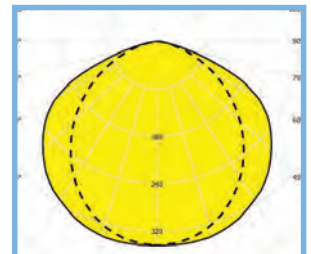
Saluka N LED Range Zone 2, 22 IP66 - Supply: 220-240VAC/DC

Table with 5 columns: Code, Description, Power, Size (mm), Lumen. Rows include V056352, V056355, V056356, V056357, V080004, V080005, V080007, V080008.

- Housing in White Painted Steel
Diffuser in Tempered Glass
IK08 Impact Resistance
Tempered Safety Glass
Operating Temp.: -20 to 45°C.
L80B10 ta40 - 70000h
L70B10 ta40 - 100000h
Colour Temperature: 4000K
c/w 1 x Gland, 1 x Sealing Plug, Suspension Kit

Accessories

Table with 2 columns: Code, Description. Rows: V051139 Set of ceiling brackets Stainless Steel, V051145 Pole Bracket Ø50mm (1pc)

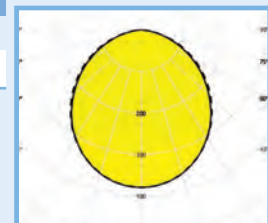
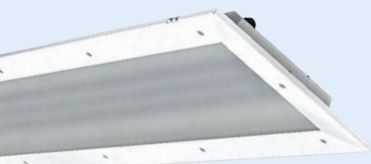


Ex nR IIC T6 Gc
Ex tc IIIC T63°C Dc

Nord-N-LED Range Zone 2, 22 IP66 - Supply: 220-240VAC/DC

Table with 5 columns: Code, Description, Power, Size (mm), Lumen. Rows include V055880, V055881.

- Built for Paintbays, Paintshops and Automotive Plants
Housing in White Painted Metal Sheet RAL9003
IK08 Impact Resistance
Diffuser in Opal, Tempered Safety Glass
Operating Temp.: -20 to 50°C
c/w 1 x Gland, 1 x Sealing Plug
L80B10 ta40 - 70000h
L70B10 ta40 - 100000h
Colour Temperature: 4000K



LED EXPLOSION PROOF LIGHTING

Ex nR IIC T6 Gc
Ex tc IIIC T68°C Dc

5 Year Warranty



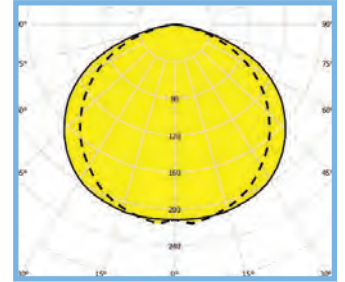
Pitbul N LED Range IP65 Zone 2, 22 - Supply: 220-240VAC/DC

Code	Description	Power	Size (mm)	Lumen
V053791	PITBUL-N-LED-10000-236-4K	71W	1312 x 302 x 130	8870lm
V053792	PITBUL-N-LED-15000-258-4K	106W	1611 x 302 x 130	13360lm
V053794	PITBUL-N-LED-18300-436-4K	121W	1312 x 302 x 130	15835lm
V053795	PITBUL-N-LED-29000-458-4K	197W	1611 x 302 x 130	24750lm

- White painted steel housing & tempered safety glass diffuser
- IK08 Level of Impact Resistance
- Operating Temp.: -20 to 50°C.
- c/w 1 x Gland, 1 x Sealing Plug
- L80B10 ta35 - 70000h
- L70B10 ta35 - 100000h
- Colour Temperature: 4000K

Accessories

Code	Description
V053940	Adjustable Mounting Bracket Set
V004642	Suspension Bracket M8 (1pc)
V051146	Pole Bracket - Ø50mm (1pc)
V054935	Set of Ceiling Mounting Brackets



FLUORESCENT EXPLOSION PROOF LIGHTING

Ex de ib mb IIC T4 Gb
Ex t IIIC Db T60°C IP65

5 Year Warranty



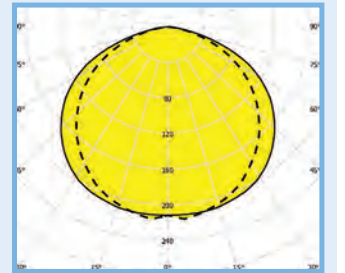
Pitbul Ex Fluorescent Range IP65 Zone 1, 21 - Supply: 220-250VAC/DC

Code	Description	Power	Size (mm)
V053804	PITBUL-Ex-136-D - 4ft Single Electronic Ballast	1 x 36W	1312 x 302 x 130
V053805	PITBUL-Ex-236-D - 4ft Double Electronic Ballast	2 x 36W	1312 x 302 x 130
V053808	PITBUL-Ex-158-D - 5ft Single Electronic Ballast	1 x 58W	1611 x 302 x 130
V053809	PITBUL-Ex-258-D - 5ft Double Electronic Ballast	2 x 58W	1611 x 302 x 130

- White painted steel housing & tempered safety glass diffuser
- Fitted with Disconnecter
- Operating Temp.: -20 to 40°C.
- c/w 1 x Gland, 1 x Sealing Plug

Accessories

Code	Description
V004642	Suspension Bracket M8 (1pc)
V054935	Set of Ceiling Mounting Brackets
V053940	Adjustable Mounting Bracket Set
V051146	Pole Mounting Bracket - Ø50mm (1pc)
V000302	Spare Ballast V053804
V000303	Spare Ballast V053805, V053808
V000305	Spare Ballast V053809



Ex nR IIC T6 Gc
Ex tb IIIC T62°C Dc

5 Year Warranty



Extra Ex Fluorescent Range IP66 Zone 2, 22 - Supply: 220-240VAC/DC

Code	Description	Power	Size (mm)
V055502	EXTRA-N-S-136-EP - 4ft Single Electronic Ballast	1 x 36W	1280 x 155 x 105
V055503	EXTRA-N-S-236-EP - 4ft Double Electronic Ballast	2 x 36W	1280 x 155 x 105
V055504	EXTRA-N-S-158-EP - 5ft Single Electronic Ballast	1 x 58W	1580 x 155 x 105
V055505	EXTRA-N-S-258-EP - 5ft Double Electronic Ballast	2 x 58W	1580 x 155 x 105

- UV Stabilized polycarbonate housing & diffuser
- Stainless Steel Clips and Mounting Brackets
- c/w 1 x Gland, 3 x Sealing Plugs & Mounting Brackets
- IK10 Level of Impact Resistance



EXPLOSION PROOF LIGHTING



Halle-High Bay - 230V Control Gear. 470mm ø Bowl IP65

GW83563S	250W	SE High Pressure Sodium	3A	E40
GW83564M	250W	ME Metal Halide	2.2A	E40
GW84814	Optional Wire Guard			

GW83563S - 250W II3GD Ex nA IIC T2 Gc Ex tc IIIC T113°C Dc -20°C ≤ Ta ≤ +25°C X IP65
 GW83564M - 250W 1kV II3GD Ex nA IIC T1 Gc Ex tc IIIC T137°C Dc -20°C ≤ Ta ≤ +25°C X IP65
 GW83566S - 400W II3GD Ex nA IIC T1 Gc Ex tc IIIC T156°C Dc -20°C ≤ Ta ≤ +25°C X IP65
 GW83567M - 400W 1kV II3GD Ex nA IIC T1 Gc Ex tc IIIC T137°C Dc -20°C ≤ Ta ≤ +25°C X IP65

ATEX PAINTED ENCLOSURES IP66

2 Year Warranty



Spare Clamps GW88255

Zone 2(G) Zone 22(D) Aluminium Enclosures

Enclosure Code	Internal Dimensions(mm)	Pack/Carton Qty	Chassis Plates	Box QTY
GW76291	91 x 91 x 54	40	-	-
GW76292	128 x 103 x 57	32	GW76272	10
GW76293	155 x 130 x 58	24	GW76273	10
GW76294	178 x 156 x 75	16	GW76274	10
GW76295	239 x 202 x 85	8	GW76275	5
GW76296	294 x 244 x 114	4	GW76276	5
GW76297	392 x 298 x 149	1	GW76277	5

c/w kit for external earthing



Atex Class: II 3GD Ex nA IIC Gc Ex tc IIIC Dc -20°C ≤ Ta85 °C U

TOXIC GAS SENSOR



COMPLETE UNIT

Toxic Gas Sensors - Non-Ex

c/w gas sensor with gasket, calibrated 4-20mA digital transmitter board and mounting posts. Gasket sensor diameter: 32.3mm

Code	Type	Colour
CO-BF-*	Carbon Monoxide	Green
H2S-BE-*	Hydrogen Sulphide	Orange
S02-BE-1	Sulphur Dioxide	Red

*Add sensor range to code: 1 (0-500ppm), 2 (0-2000ppm)
 Input voltage: 10-30VDC (loop powered)
 Connection: 2-Pin Molex (22-27-2021)
 CE Approval: BS EN 61326 (Industrial)

Designed for mounting in any enclosure



CH-A3-BF

Explosive Gas Sensor

Wheatstone bridge type combustible gas sensor
Sensor diameter: 20.25mm

Code	Type
CH-A3-BF	Explosive Gas Pellistor
440P55	PCB socket for Pellistor



440P55

CH-A3-BF detects: Propane, Ethylene, Nonane, Acetylene, Butane, Isobutylene, Hydrogen, n-Pentane and Carbon Monoxide

Order Pellistor and PCB Socket separately

EX II 2G Ex d IIC T4
SIRA 07 ATEX 1088X

EXPLOSION PROOF FANS



FAN



Fan



Grill

Explosion Proof IP55



Explosion Proof Fans	kW	Supply Voltage	Flow Rate	Size (mm) H x W x Ø	Grill Code
OW354	0.12	230VAC	900m³/h	340 x 340 x 260	OW595
OW355	0.14	230VAC	1500m³/h	390 x 390 x 312	OW596
OW356	0.16	230VAC	2250m³/h	460 x 460 x 365	OW597
OW350	0.18	230VAC	2900m³/h	510 x 510 x 415	OW598
OW351	0.21	230VAC	4500m³/h	630 x 630 x 515	OW599
OW361	0.18	400VAC	2900m³/h	510 x 510 x 415	OW598

Marking: II 2G c T4
 • Ex-Atex Approved CESI N.03 Atex 251
 • Maximum Operating Temperature 135°C

CCG EXPLOSION PROOF GLANDS

A2 Ex - Compression Gland IP65/66/68



Size	Code	Metric Entry Thread
00	053600	M20x1.5
0	0536-0	M20x1.5
1	053601	M20x1.5
2	053602	M25x1.5
3	053603	M32x1.5
4	053604	M40x1.5
5	053605	M50x1.5
6	053606	M63x1.5
7	053607	M75x1.5
8	053608	M80x2.0
9	053609	M90x2.0
10	053610	M100x2.0

Ex db IIC Gb, Class I Zone 1
Ex eb IIC Gb Zone 21
Ex ta IIIC Da, Class I Zone 2
Ex nR IIC Gc, IP66/67/68

Features

- Gland for use in Ordinary and Hazardous Locations
- Inner seal seals on the cable sheath
- Complete with a thread sealing gasket
- Operating Temperature : -60°C to +95°C /100°C

Ex Corrosion Guard - SWA Gland IP68



Size	Code	Metric Entry Thread
00	-	M20x1.5
0	0547-0	M20x1.5
1	054701	M20x1.5
2	054702	M25x1.5
3	054703	M32x1.5
4	054704	M40x1.5
5	054705	M50x1.5
6	054706	M63x1.5
7	054707	M75x1.5
8	054708	M80x2.0
9	054709	M90x2.0
10	054710	M100x2.0

Ex db IIC Gb
Ex eb IIC Gb
Ex nR IIC Gc
Ex ta IIIC Da

Features

- For highly corrosive, wet locations, Group II, III, Zone 1, 2, 20, 21 and 22 hazardous areas
- Precision manufactured from high-quality brass (Marine Grade Electroless Nickel Plated™)
- Operating Temperature : -60°C to +95°C /100°C

Posi Grip - Barrier Gland Compression Gland - IP65/66/68



Size	Code	Metric Entry Thread
00	054500	M20x1.5
0	0545-0	M20x1.5
1	054501	M20x1.5
2	054502	M25x1.5
3	054503	M32x1.5
4	054504	M40x1.5
5	054505	M50x1.5
6	054506	M63x1.5
7	054507	M75x1.5
8	054508	M80x2.0
9	054509	M90x2.0
10	054510	M100x2.0

Ex db IIC Gb
Ex eb IIC Gb
Ex nR IIC Gc
Ex ta IIIC Da

Features

- For highly corrosive Group II, III, Zone 1, 2, 20, 21 and 22 hazardous areas
- Brass parts are encapsulated in and protected by a corrosion-resistant material
- Operating Temperature : -20°C to +95°C

Posi Grip VX - Barrier Gland SWA Gland - IP68



Size	Code	Metric Entry Thread	Pack Size
00	56900-K	M20x1.5	8 Pack
0	0569-0-K	M20x1.5	6 Pack
1	056901-K	M20x1.5	5 Pack
2	056902-K	M25x1.5	2 Pack
3	056903-K	M32x1.5	2 Pack
4	056904	M40x1.5	1 Pack
5	056905	M50x1.5	1 Pack
6	056906	M63x1.5	1 Pack
7	056907	M75x1.5	1 Pack
8	056908	M80x2.0	1 Pack
9	056909	M90x2.0	1 Pack
10	056910	M100x2.0	1 Pack
11	056911	M110x2.0	1 Pack

Ex db IIC Gb
Ex eb IIC Gb
Ex nR IIC Gc
Ex ta IIIC Da

Features

- For highly corrosive Group II, III, Zone 1, 2, 20, 21 and 22 hazardous areas
- Brass parts are encapsulated in and protected by a corrosion-resistant material
- Operating Temperature : -20°C to m110 x2.0+95°C

FLP TR - Comp. Gland IP68



Size	Code	Metric Entry Thread
00	FCG-00	M20x1.5
0	FCG-0	M20x1.5
1	FCG-1	M20x1.5
2	FCG-2	M25x1.5
3	FCG-3	M32x1.5
4	FCG-4	M40x1.5
5	FCG-5	M50x1.5
6	FCG-6	M63x1.5
7	FCG-7	M75x1.5

Ex db I/IIC
Ex eb I/IIC
Ex ta IIIC
Ex nR IIC

Features

- Group I underground mines, Group II, III, Zone 1, 2, 21 and 22 hazardous areas
- Operating Temperature : -60°C to +95°C/100°C

FLP - SWA Gland IP68



Size	Code	Metric Entry Thread
00	FSG-00	M20x1.5
0	FSG-0	M20x1.5
1	FSG-1	M20x1.5
2	FSG-2	M25x1.5
3	FSG-3	M32x1.5
4	FSG-4	M40x1.5
5	FSG-5	M50x1.5
6	FSG-6	M63x1.5
7	FSG-7	M75x1.5

Ex db I/IIC
Ex eb I/IIC
Ex ta IIIC
Ex nR IIC

Features

- Group I underground mines, Group II, III, Zone 1, 2, 21 and 22 hazardous areas
- Operating Temperature : -60°C to +95°C/100°C

CCG EXPLOSION PROOF GLAND



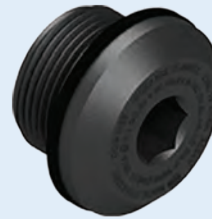
Ex db I Mb
Ex eb I Mb
Ex ta IIIC Da
Ex nR IIC

Metric to Metric Reducer - IP65/66/67/68

Code	Description
REDM25M16F	M20 to M16 Reducer
REDM25M20F	M25 to M20 Reducer
REDM32M25F	M32 to M25 Reducer
REDM40M32F	M40 to M32 Reducer
REDM50M25F	M50 to M25 Reducer
REDM63M50F	M63 to M50 Reducer

Features

- Precision manufactured from high quality brass (Marine Grade Electroless Nickel Plated™)
- Operating Temperature : -60°C to +95°C



Ex eb IIC Gb
Ex tb IIIC Db
Ex nR IIC Gc

Blanking Plug - Non-Metallic - IP65/66/67/68

Code	Dimensions
352720	M20x1.5
352725	M25x1.5
352732	M32x1.5
352740	M40x1.5

Features

- Precision manufactured from Nylon 6
- Used to blank off threaded entry holes
- May be used to blank off an unthreaded entry hole if secured in place with a locknut
- Operating Temperature : -20°C to +95°C



Ex db I Mb
Ex eb I Mb
Ex ta IIIC Da
Ex nR IIC

Thread Adaptor - IP65/66/68

Code	Description
ADA3/4NPTM25F	¾ NPT to M25 Adaptor
ADAM20M25F	M20 to M25 Adaptor
ADAM25M32F	M25 to M32 Adaptor
ADAM32M40F	M32 to M40 Adaptor

Features

- Precision manufactured from high quality brass (Marine Grade Electroless Nickel Plated™)
- Operating Temperature : -60°C to +95°C



Ex db I Mb
Ex eb I Mb
Ex db IIIC Gb
Ex eb IIC Gb

Blanking Stopper Plug - IP65/66/68

Code	Description
BPLGM20F	M20 Blanking Plug
BPLGM25F	M25 Blanking Plug
BPLGM32F	M32 Blanking Plug
BPLGM40F	M40 Blanking Plug
BPLGM50F	M50 Blanking Plug

Features

- Precision manufactured from high quality brass (Marine Grade Electroless Nickel Plated™)
- Operating Temperature : -60°C to +95°C

ARMoured CABLE CABLE GLAND SIZING CHART

Cable Size	2 Core		3 Core		4 Core		5 Core		6 Core		7 Core		10 Core		12 Core	
	Size	Thread	Size	Thread	Size	Thread	Size	Thread	Size	Thread	Size	Thread	Size	Thread	Size	Thread
1,5mm	0	M20	0	M20	0	M20	0	M20	0	M20	0	M20	1	M20	1	M20
2,5mm	0	M20	0	M20	0	M20	0	M20	1	M20	1	M20	2	M25	2	M25
4mm	0	M20	0	M20	0	M20	1	M20	1	M20	2	M25	2	M25	3	M32
6mm	1	M20	1	M20	1	M20	1	M20	2	M25	2	M25	3	M32	3	M32
10mm	1	M20	2	M25	2	M25	2	M25	2	M25	2	M25	3	M32	3	M32
16mm	2	M25	2	M25	2	M25	2	M25	3	M32	3	M32				
25mm	2	M25	2	M25	2	M32	3	M32	4	M40	4	M40				
35mm	2	M25	3	M32	3	M32	3	M32	4	M40						
50mm	3	M32	3	M32	3	M32	3	M32								
70mm	3	M32	3	M32	3	M32	4	M40								
95mm	3	M32	4	M40	4	M50										
120mm	4	M40	5	M50	5	M50										
150mm	4	M40	5	M50	5	M50										

CCG JUNCTION BOXES

Ex eb I Mb
Ex eb IIC T6 Gb
Ex ec IIC T6 Gc
Ex tb IIIC T70°C Db



Empty POSI FIT™ Junction Boxes - 4 Way IP66/68

Code	Size	Entry Thread	Overall Height	Clear Inside Ø
EX100301-*	1	M20x1.5	98mm	92mm
EX100302-*	2	M25x1.5	114mm	108mm

* Add Lid type to Code: **B** (Black Lid), **CL** (Clear)

Features

- IK10 Impact Rating
- For Group I Mining and Group II and III Applications
- Dust and watertight to IP66/68, when fitted with CCG sealed cable glands
- Operating Temperature : -60°C to +110°C
- **Ex Terminals fitted on request**

Ex eb I Mb
Ex eb IIC T6 Gb
Ex ec IIC T6 Gc
Ex tb IIIC T70°C Db



Empty Flameproof Bottom Entry Angle Junction Boxes IP66/68

Code	Size	Entry Thread	Overall Height	Clear Inside Ø
100921-BE	1	M20 x 1.5	105mm	101mm
100922-BE	2	M25 x 1.5	105mm	123mm
100923-BE	3	M32 x 1.5	140mm	181mm

Features

- IK10 Impact Rating
- Bottom Entry Angle™ Box for use in Group I mining (low impact areas), Group II and Group III applications
- DIN Rail mounting studs are provided for use with terminal blocks
- Dust and watertight to IP66/68, when fitted with CCG sealed cable glands
- Operating Temperature : -60°C to +100°C
- **Ex Terminals fitted on request**

Ex eb I Mb
Ex eb IIC T6 Gb
Ex ec IIC T6 Gc
Ex tb IIIC T70°C Db



Empty Flameproof Angle Box - 4 Way IP66/68

Code	Size	Entry Thread	Overall Height	Clear Inside Ø
100922-M20	1	M20x1.5	102mm	123mm
100922-M25	2	M25x1.5	102mm	123mm

Features

- IK10 Impact Rating
- Bottom Entry Angle™ Box for use in Group I mining (low impact areas), Group II and Group III applications
- DIN Rail mounting studs are provided for use with terminal blocks
- Dust and watertight to IP66/68, when fitted with CCG sealed cable glands
- Operating Temperature : -60°C to +100°C
- **Ex Terminals fitted on request**

Ex eb I
Ex eb IIC
Ex ec IIC
Ex tb IIC



Empty Flameproof Multi Box IP66/68

Code	Entry Thread	Overall Length	Overall Height	Overall Width
10050B	M16 to M32*	196mm	109mm	132mm
10050C	M16 to M40*	278mm	117mm	200mm

* Entry Thread: Multiple Configurations from M16 to M40

Features

- IK10 Impact Rating
- Multi Box for use in Group I mining (low impact areas), Group II and Group III applications.
- High-temperature resistance, corrosion resistant and anti-static properties.
- Drilling of cable entries to customer requirements. Internal earthing to all entries and rail.
- A lid with captive screws provides ease of installation.
- Operating Temperature: -60°C to +55°C
- **Ex Terminals fitted on request**

Ex d I Mb / IIC Gb T6
Ex tb IIIC T85°C Db



Empty Flameproof Angle Box - 4 Way IP66/68

Code	Size	Entry Thread	Overall Height	Clear Inside Ø
EX100801-M20	1	M20x1.5	87mm	96mm
EX100801-M25	2	M25x1.5	87mm	96mm

Features

- IK10 Impact Rating
- For Group I Mining and Group II and III Surface
- Dust and waterproof IP66/68
- Integrated mounting back plate
- Superior corrosion resistant flame paths
- External earth stud
- Operating Temperature: -20°C to +55°C
- **Ex Terminals fitted on request**

NEW

EX CCG JUNCTION BOXES WITH TERMINALS

Ex eb I Mb
Ex eb IIC T6 Gb
Ex ec IIC T6 Gc
Ex tb IIIC T70°C Db



POSI FIT™ - 4 Way Junction Boxes with Terminals IP66/68

Code	Size Reference	Entry Thread	Terminals Included	
100301A04P04P04X	1	M20 x 1.5	- 4 x 4mm Terminals - 2 x Partitions - 2 x End Stops - 1 x Rail	- 2 x 4mm Earth Terminals - 1 x End Plates - 12 x Markers - 2 x Stand offs
100301A04P68S04S	1	M20 x 1.5	- 8 x 4mm Terminals - 6 x Partitions - 2 x End Stops - 1 x Rail	- 1 x 4mm Earth Terminals - 1 x End Plates - 18 x Markers - 2 x Stand offs
100302W06P04P06S	2	M25 x 1.5	- 4 x 6mm Terminals - 2 x End Stops - 12 x Markers - 1 x Rail	- 2 x 6mm Earth Terminals - 2 x End Plates - 2 x Stand offs - 2 x 2 Way Links
100302W10P24P10S	2	M25 x 1.5	- 4 x 10mm Terminals - 2 x End Stops - 12 x Markers - 1 x Rail	- 2 x 10mm Earth Terminals - 1 x End Plates - 2 x Stand offs - 2 x 2 Way Links
100303W16P24P16S	3	M25 x 1.5	- 4 x 16mm Terminals - 2 x End Stops - 12 x Markers - 1 x Rail	- 2 x 16mm Earth Terminals - 2 x End Plates - 2 x Stand offs - 2 x 2 Way Links
100303W35P24P35S	3	M25 x 1.5	- 4 x 35mm Terminals - 2 x End Stops - 12 x Markers - 1 x Rail	- 2 x 35mm Earth Terminals - 1 x End Plates - 2 x Stand offs - 2 x 2 Way Links

Ex eb I Mb
Ex eb IIC T6 Gb
Ex ec IIC T6 Gc
Ex tb IIIC T70°C Db



Bottom Entry Angle - 3 Way Junction Boxes with Terminals IP66/68

Code	Size Reference	Entry Thread	Terminals Included	
100922W04P24P04Z	1	M20 x 1.5	- 4 x 4mm Terminals - 2 x Partitions - 2 x End Stops - 1 x Rail	- 2 x 4mm Earth Terminals - 1 x End Plates - 12 x Markers - 2 x Stand offs
100922W06P24P06Z	2	M25 x 1.5	- 4 x 6mm Terminals - 2 x End Stops - 12 x Markers - 1 x Rail	- 2 x 6mm Earth Terminals - 2 x End Plates - 2 x Stand offs - 2 x 2 Way Links
100923W16P24P16Z	3	M32 x 1.5	- 4 x 16mm Terminals - 2 x End Stops - 12 x Markers - 1 x Rail	- 2 x 16mm Earth Terminals - 2 x End Plates - 2 x Stand offs - 2 x 2 Way Links

Ex d I Mb / IIC Gb T6
Ex tb IIIC T85°C Db



Flameproof - 4 Way Junction Box with Terminals IP66/68

Code	Size Reference	Entry Thread	Terminals Included	
100801A04P24P04S	1	M20 x 1.5	- 4 x 4mm Terminals - 2 x Partitions - 2 x End Stops - 1 x Rail	- 2 x 4mm Earth Terminals - 1 x End Plates - 12 x Markers - 2 x Stand offs

EXPLOSION PROOF ACCESSORIES

	Cable Glands Explosive Areas IP68 5 Bar, With strain relief Black Polyamide Group II Category 2GD, ATEX1087X				For Armored Cable Double Seal IP66			Compression Glands IP65	
	Code	Size	Cable Size Ø		Size	Code		Size	Code
	124M20EX03	M20	6-12mm		20mm	EPG-709002		20mm	EPC-706001
	124M25EX03	M25	11-17mm		25mm	EPG-709004		25mm	EPC-706002
124M32EX03	M32	15-21mm	32mm	EPG-709006	32mm	EPC-706003			
			40mm	EPG-709008	40mm	EPC-706004			

Hole Plugs

Ex db IIC Gb Ex e IIC Gb Ex tb IIIC Db IP66		Ex db IIC Gb Ex e IIC Gb Ex tb IIIC Db IP66		Ex eb IIC Gb Ex e IIC Gb Ex tb IIIC Db IP66		
Size	Code Alum. Alloy	Length L (mm)	Code Brass Nickel Plated	Length L (mm)	Code PA66 (Polyamide)	Length L (mm)
20	BA-715001	17	BPT-715011	17	BZ-714002	10
25	BA-715002	17	BPT-715012	17	BZ-714003	12
32	BA-715003	20	BPT-715013	20	BZ-714004	12
40	BA-715004	20	BPT-715014	20	BZ-714005	14.5
50	BA-715005	20	BPT-715015	20	BZ-714006	15

FLAMEPROOF INDICATION LIGHTS

Live Line Indicators • M25 Cable Entry • Size: Ø60 x 110(L)mm		Indicator Lights Size: Ø 85mm x 25mm Thread Size: M25		LED Indication Lights Thread Size: M25 Size: Ø38mm	
Code	Description	Code	Description	Colour	Code
FLP-EV-1KV	3-LED Live Line Indicator In Brass Body • 1000VAC • RED Light	FLP-EP3-24	3-Row Cluster Light (Red, Green & Amber) • 12/24VDC • c/w Male & Female connectors	• Red • Blue • Green • White • Amber	FLP-EA-R* FLP-EA-BL* FLP-EA-GN* FLP-EA-WH* FLP-EA-A*
*Add voltage: 24 (12/24VDC), 110 (110VAC) or 230 (230VAC)					

FLAMEPROOF PUSH BUTTONS

Head Size: 25(H) x 30(Ø)mm Body Size: 80mm				
Description	Start	Stop	Test	Reset
Mounting Hole - M20	PBUTM20-ST	PBUTM20-STP	PBUTM20-TEST	PBUTM20-RES
Mounting Hole - M25	PBUTM25-ST	PBUTM25-STP	PBUTM25-TEST	PBUTM25-RES
Contact 10A@240V	1NO	1NC	1NO	1NO
Waterproof Push Buttons Head Size: 32.5(H) x 40(Ø)mm Body Size: 80mm				
Description	Start	Stop	Test	Reset
M20	PBUTM20-STWP	PBUTM20-STPWP	PBUTM20-TESTWP	PBUTM20-RESWP
M25	PBUTM25-STWP	PBUTM25-STPWP	PBUTM25-TESTWP	PBUTM25-RESWP
Contact 10A@240V	1NO	1NC	1NO	1NO
Emergency Stop Push Buttons Head Size: 43(H) x 60(Ø)mm Body Size: 80mm		Description M20 M25 Contact 10A@250V	E/Stop PBUTM20-ES PBUTM25-ES 1NC	
Push - Pull	Description M20 M25 Contact 10A@250V	E/Stop Lockable PBUTM20-ESLK PBUTM25-ESLK 1NC	Push - Pull	Description M20 M25 Contact 10A@250V

For additional contacts refer to Main Catalogue



EXPLOSION PROOF ACCESSORIES



90° Glands & Keeper Plates

Code	Description	Size Ø
GLND90050.8	90° Compression Glands & Keeper Plates FLP	50.8mm
GLND90063.5	90° Compression Glands & Keeper Plates FLP	63.5mm
GLND90076.2	90° Compression Glands & Keeper Plates FLP	76.2mm

Flameproof Bushings



BFLPM32MOT



BFLPM32THR



BFLPM20THR

Code	Description
BFLPM32MOT	M32 Motor Bushing with M12 Studs
BFLPM20THR	M20 through Bushing with 6 x 1.5mm² Wires (1m Total Length)
BFLPM25THR	M25 through Bushing with 12 x 1.5mm² Wires (1m Total Length)
BFLPM32THR	M32 through Bushing with 20 x 1.5mm² Wires (2m Total Length)

High Security Key Switches

Ronnis Key Switches



Abloy Key Switch Barrel



Abloy Key Switch

Brass Body



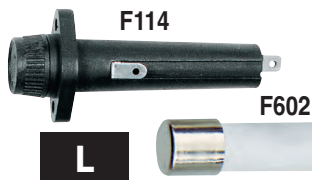
Code	Description	Code	Description	Code	Description
KEYSW-SR-1	Ronnis Keyswitch (Spring Return) x 2 Keys	KEYSW-AB3K	Abloy key switch barrel only with 3 keys	KEYSW-AB1	Abloy key switch barrel & brass body & 1NO 10A Contact incl 3 keys
KEYSW-SP-2	Ronnis Keyswitch (Stay Put) x 2 Keys	KEYSW-RB	Roof bolter key switch barrel & 3 keys (RB engraved)		
		KEYSW-SC	Shuttle car key switch barrel & 3 keys (SC engraved)		
		KEYSW-CM	Continuous miner key switch barrel & 3 keys (CM engraved)		
		KEYSW-PDS	PDS key switch barrel & 3 keys (PDS engraved)		
		Abloy Keys Only			
		KEY-AB	Abloy Keys Only - 3 Keys		
		KEY-ABMAS	Abloy Master Key - 3 Keys		



Flameproof Quick Connectors - with or without cable

Code	Description	Wire Length
FQC-PL-*-2M	Quick Connector Plug (Male)	2 meters
FQC-SC-*-3M	Quick Connector Socket (Female)	3 meters
FQC-SC-*-6M	Quick Connector Socket (Female)	6 meters

* Add no. of way to code: 04, 05, 19



1000V Fuse Holders & Fuses

Code	Description
P114	1000V Fuse Holder For 10 x 85 Fuse
F602*	1500V Fuse Size 10 x 85 Fuse

* Add Amps to code: 2A, 4A, 6.3A, 10A, 16A

FLAMEPROOF JUNCTION BOXES

Flameproof Junction Boxes



Code	Description	No of Cable Entries	Size Ø x H
KBE2M20L-2	K-Box - Empty with 2xM20 Hole	2 x M20	145 x 104
KBE2M25L-2	K-Box - Empty with 2xM25 Hole	2 x M25	145 x 104
KBE4M20L-2	K-Box - Empty with 4xM20 Hole	4 x M20	145 x 104
KBE4M25L-2	K-Box - Empty with 4xM25 Hole	4 x M25	145 x 104

NEW

ATEX WALL MOUNTING ENCLOSURES IP66

Ex e IIC Gb
Ex tb IIIC Db
LOM 12ATEX 3060U
ATEX94/9/CE



Wall Mounting Enclosures

Mild Steel Grey	Electric Orange	304L Stainless	Size (mm) H x W x D	Locks	Hinges
ATX0302515-G	ATX0302515-O	ATX0302515-INX	300 x 250 x 150	1	2
ATX0403020-G	ATX0403020-O	ATX0403020-INX	400 x 300 x 200	1	2
ATX0404020-G	ATX0404020-O	ATX0404020-INX	400 x 400 x 200	1	2
ATX0504020-G	ATX0504020-O	ATX0504020-INX	500 x 400 x 200	2	2
ATX0604020-G	ATX0604020-O	ATX0604020-INX	600 x 400 x 200	2	2
ATX0606025-G	ATX0606025-O	ATX0606025-INX	600 x 600 x 250	2	2
ATX0705025-G	ATX0705025-O	ATX0705025-INX	700 x 500 x 250	2	2
ATX0806030-G	ATX0806030-O	ATX0806030-INX	800 x 600 x 300	2	2
ATX1008030-G	ATX1008030-O	ATX1008030-INX	1000 x 800 x 300	3	3

- Zone 1 & 2, Zone 21
- -20°C to +60°C
- Grey RAL7035 - Mild Steel
- Electric Orange RAL2000 - Mild Steel
- Polished 304 L Stainless Steel
- Include chassis plate & 4 wall brackets

EXPLOSION PROOF JUNCTION & TERMINAL BOXES

Ex II 2G Ex e II T6

Aluminium Terminal Boxes IP65 - Material: Aluminium Alloy, Yellow Powder coated

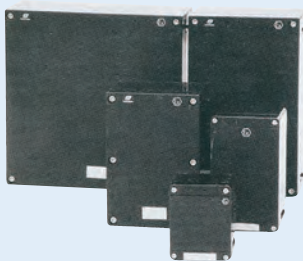


Code	Size (mm) L x W x D	No. of Terminals Fitting into box					No. of rows	No. of entries
		2.5mm ²	4mm ²	6mm ²	10mm ²	16mm ²		
BXJ-E-1	190 x 132 x 127	20	18	15	12	10	1	2 bottom
BXJ-E-2	190 x 190 x 127	20	18	15	12	10	1	2 bottom
BXJ-E-3	250 x 190 x 127	30	28	22	18	15	1	3 bottom
BXJ-E-4	250 x 250 x 127	60	56	44	36	30	2	3 bottom
BXJ-E-5	300 x 200 x 150	80	72	60	48	-	2	4 bottom

- Suitable for use in: Zones 1 & 2, 21 & 22
- Terminals not included
- For use with ATEX approved terminals
- Cable Entries: M20 x 1.5

Ex II 2G Ex e II T6

Polyester Terminal Boxes IP65 - Material: Glass fibre reinforced Polyester resin



Code	Size (mm) L x W x D	No. of Terminals Fitting into box					No. of rows	No. of entries	Cable Entry Size
		2.5mm ²	4mm ²	6mm ²	10mm ²	16mm ²			
BXJ8050-1	160 x 160 x 86	12	11	9	-	-	1	2 bottom	M20 x 1.5
BXJ8050-2	220 x 130 x 109	25	23	18	15	-	1	2 bottom	M40 x 1.5
BXJ8050-3	260 x 179 x 120.5	30	27	22	18	15	1	2 bottom	M25 x 1.5
BXJ8050-4	360 x 220 x 122	44	40	33	26	22	1	4 bottom	M40 x 1.5
BXJ8050-5	360 x 360 x 122	88	80	66	52	44	2	4 bottom	M40 x 1.5

- Suitable for use in: Zones 1 & 2, 21 & 22
- Terminals not included
- For use with ATEX approved terminals
- Cable Entries: M20 x 1.5



BXJ8050-20B/6-4



BHD51

BHD51-F

NEW

	Plastic 4 Way	Metal-1/2/3/4 Way	Metal - For Light Fittings
Code	BXJ8050-20B/6-4	BHD51-*/M20x1.5	BHD51-F/M25X1.5
Material	Glass fibre reinforced plastic	Copper-free Aluminium Alloy	Copper-free Aluminium Alloy
Zone	Zone 1, 2, 21, 22	Zone 1, 2, 21, 22	Zone 1, 2, 21, 22
EX-Mark	Ex e IIC T6 Gb	Ex db IIC T6 Gb, Ex tb IIIC T80 Db	Ex db IIC T6 Gb, Ex tb IIIC T80 Db
Certificates	IECEX; ATEX; CU-TR	IECEX; ATEX; CU-TR	IECEX; ATEX; CU-TR
Gland Size	M25 x 1.5	M20 x 1.5	M25 x 1.5
Size	120 x 120 x 60mm	122 x 122 x 80mm	134 x 146 x 70mm
Temperature Range	-20°C to +55°C	-60°C to +60°C	-60°C to +60°C

* A (1 Gland), B (2 Glands), C (3 Glands), D (4 Glands)



NEW

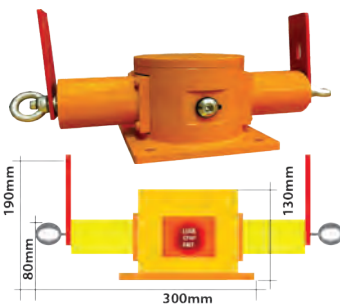
EXPLOSION PROOF LIMIT SWITCHES IP65

	Single-arm Roller	Dual-arm Roller	Roller Plunger	Push Button	Adjustable-arm Roller	Wobble Head
Code	BZX85-D	BZX85-S	BZX85-L	BZX85-Z	BZX85-K	BZX85-N

Features

- Ex d e IIC T6 Gb, Ex tb IIIC T80°C Db
- Can be used in Zone 1, 2, 21 and 22
- Copper-free Aluminium Alloy enclosure, powder coated surface.
- Gland hole size: M20 x 1.5
- Temperature: -20°C +55°C
- Increased safety enclosure with explosion-proof components.
- 1NO+1NC, 240VAC / 250VDC, 3A AC / 0.27A DC
- Rated Voltage: 240VDC 0.1A, 250VAC 1.5A, 380VAC 0,79A

PULLWIRE CONVEYOR TRIP SWITCH IP45



Code	Description	Amps	Weight	Cable Entries
CTSFLP-D	Double Ended Trip Switch	10A	18kg	1 x Side 20mm

Suitable for: Zone 1 & 2. Group IIA, IIB, IIC class T6. Contacts: 1NO + 1NC. 10A@250VAC per end
 NOTE: Available for Intrinsically Safe circuits. Also available with flashing light & accessory flashing lights.

Rope Accessories

MET

Code	PWR	SB209331/6	SB209332/6.5	SB209333/M8	SB209336/8
Description	Red Steel Wire - PVC sheath rope 100m Ø5mm	Thimble 6mm	Clamp 6.5mm	Eye Bolt M8	Tensioner 8mm

FLAMEPROOF CONTROL STATIONS

1 Way Control Stations - Zone 1 Group IIA, IIB, IIC



Code Cast Iron	Description	Enclosure Size (mm) External (H x W x D)
PBS71-START*	Start Station	140 x 100 x 135
PBS71-1*	Emergency Stop (spring return)	140 x 100 x 135
PBS71-2*	Padlockable Stop Station	140 x 100 x 135
PBS71-3*	Emergency Stop (push/pull)	140 x 100 x 135
PBS71-6*	Emergency Stop Padlockable	140 x 100 x 135
CT/KMS-93†	Mining Key Switch	120 x 120 x 90

*Add 'D' for 1 x Top & 1 x Bottom 20mm entries † Add **SC** = shuttle car key **DV** = feeder breaker
 'B' for 2 x 20mm bottom entries **CM** = continuous miner

2 Way Control Stations

PBS72*	Start/Stop Station	140 x 100 x 135
PBS72-3*	Emergency Stop (push/pull)/Start	140 x 100 x 135

*Add 'D' for 1 x Top & 1 x Bottom 20mm entries, 'B' for 2 x 20mm bottom entries

4 Way Fabricated FLP Control Stations - Material: 350WA - Silver Cadmium Plated



Code	Description	Base Size (mm) L x H x Ø	Weight	Cable Entries 20mm
RBS-81	Start Station	125 x 125 x 150	4.5kg	4 Way Entries
RBS-81-2	Start/Stop Station	125 x 125 x 150	4.5kg	4 Way Entries
RBS-82	Emergency Stop (spring return)	125 x 125 x 150	4.5kg	4 Way Entries
RBS-83	Padlockable Stop Station	125 x 125 x 150	4.5kg	4 Way Entries
RBS-84	Emergency Stop (push/pull)	125 x 125 x 150	4.5kg	4 Way Entries
RBS-85	Emergency Stop Padlockable	125 x 125 x 150	4.5kg	4 Way Entries
RBS-86*	Mining Key Switch	125 x 125 x 150	4.5kg	4 Way Entries

Zone 1 Group IIA, IIB+H²

* Add **SC** = shuttle car key, **CM** = continuous miner, **FB** = feeder breaker, **RB** = Roofbolter

NEW

KAMA BANSHEE S3 RANGE - ZONE 1 & 2



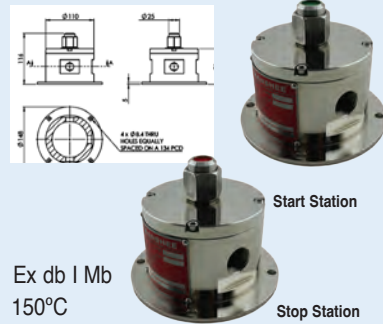
Ex db IIB +H2 T4 Gb
T4-135°C

Ex Terminal Box S3 Range

Code	Description	Gland Size	Size H x W x L	IP Rating
BXTB400	Banshee Ex Terminal Box S3	M20x1.5	98 x 160 x 160	IP54

Features

- Underground and surface hazardous areas such as mining, petrochemical plants and gas manufacturing
- Zone 1 and 2, Gas Group I, IIA, IIB



Ex db I Mb
150°C

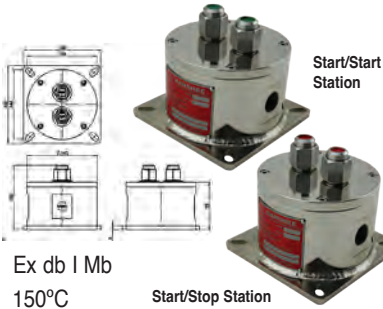
Ex Start Box S3 Range

Code	Description	Current Consumption	Duty Cycle	Gland Size	Size H x W	IP Rating
BXSA600	Banshee Ex Start Station	10A	Spring Return	M20x1.5	116xØ148	IP54

Note: Ex STOP station available on request

Features

- To safely initiate the operation of machinery and equipment used in underground mining applications. The unit consists of a flameproof enclosure that houses a switch operator which supplies power to the equipment.
- Zone 1 and 2 Gas Group I
- Rated Voltage: 600V



Ex db I Mb
150°C

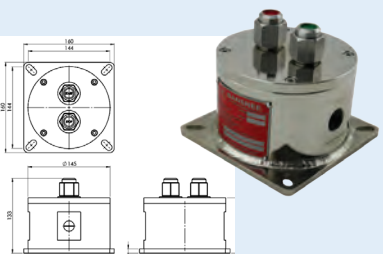
Ex Start Box S3 Range

Code	Description	Current Consumption	Duty Cycle	Gland Size	Size H x W	IP Rating
BXES900	Banshee Ex Start/Start Station	10A	Spring Return	M20x1.5	133xØ145	IP54

Note: Ex STOP/STOP station available on request

Features

- The Banshee E-Stop Stop-Start Station serves as a Multi-functional operator station for use in underground mining operations that require an E-stop for Isolating a circuit and a start operator to power a system circuit
- Zone 1 and 2 Gas Group I
- Rated Voltage: 600VAC/VDC



Ex db I Mb
150°C

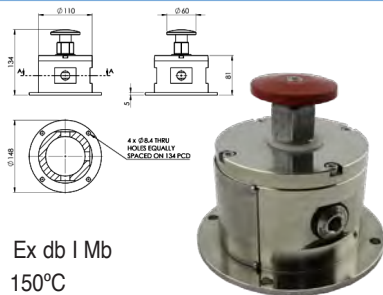
Ex Start Box S3 Range

Code	Description	Current Consumption	Duty Cycle	Gland Size	Size H x W	IP Rating
BXES800	Banshee Ex Start/Stop Station	10A	Spring Return	M20x1.5	133xØ145	IP54

Note: Ex STOP/STOP station available on request

Features

- Ex Start/Stop Station S3 serves as a safety control mechanism for use in underground mining operations by allowing operators to instantaneously stop or start equipment operations. The unit consist of a flameproof enclosure.
- Zone 1 and 2 Gas Group I
- Rated Voltage: 600V



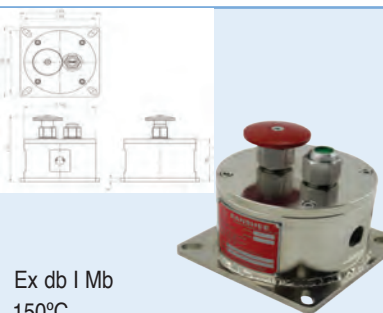
Ex db I Mb
150°C

Ex Start Box S3 Range

Code	Description	Current Consumption	Duty Cycle	Gland Size	Size H x W	IP Rating
BXES600	Banshee Ex Start/Stop Station	10A	Spring Return	M20x1.5	134xØ145	IP54

Features

- Safety device designed to interrupt the operation of machinery and equipment in Hazardous environment such as underground mining. The unit consist of a flameproof enclosure.
- Zone 1 and 2 Gas Group I
- Rated Voltage: 600V



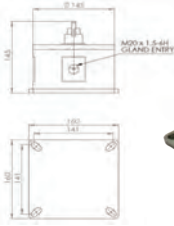
Ex db I Mb
150°C

Ex E-Stop/Start Station S3 Range

Code	Description	Current Consumption	Duty Cycle	Gland Size	Size H x W	IP Rating
BXES700	Banshee Ex E-Stop/Start Station	10A	Latch, Spring Return	M20x1.5	151xØ145	IP54

Features

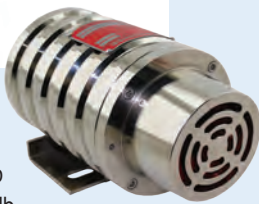
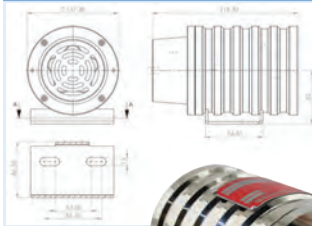
- Serves as a safety control mechanism for use in underground mining operations by allowing operators to instantaneously stop or start equipment operations. The unit consists of a flameproof enclosure.
- Zone 1 and 2 Gas Group I
- Rated Voltage: 600V

**NEW****KAMA BANSHEE S3 RANGE - ZONE 1 & 2**Ex db I Mb, Ex db IIB + H2 T4 Gb
T4-135°C**Ex Isolator S3 Range**

Code	Description	Current Consumption	Duty Cycle	Gland Size	Size H x W	IP Rating
BXIS400	Banshee Ex Isolator	25A	Switch Isolator	M20x1.5	151xØ145	IP54

Features

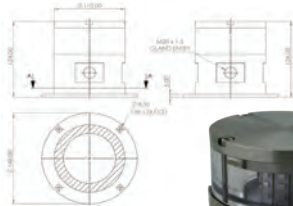
- Explosion-proof switch that provides users with a safe and reliable method for isolating electrical circuits or equipment. This specialized switch was designed for use in hazardous industries such as petrochemicals, refineries, and mining and consists of a flameproof enclosure
- Zone 1 and 2, Gas Group I, IIA, IIB
- Rated Voltage: 415V

Ex db ia I Mb
Ex db [ia] I Mb
T4-135°C**Ex Isolator S3 Range**

Code	Description	Sounder Frequency	Duty Cycle	Sounder Output	Voltage	IP Rating
BXMS012	Banshee Ex Sounder	800 - 2400Hz	Continuous Rated	110dB	12VAC/DC	IP54
BXMS024	Banshee Ex Sounder	800 - 2400Hz	Continuous Rated	110dB	24VAC/DC	IP54
BXMS110	Banshee Ex Sounder	800 - 2400Hz	Continuous Rated	110dB	110VAC	IP54
BXMS220	Banshee Ex Sounder	800 - 2400Hz	Continuous Rated	110dB	220VAC	IP54

Features

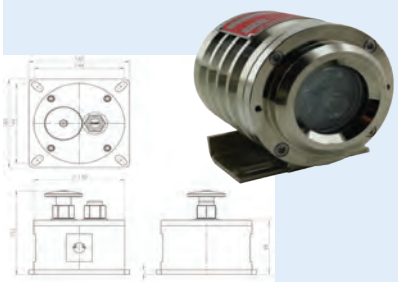
- Electronic sounder suitable for use in underground and surface applications or in areas where an explosion-protected device is required. The unit consists of an electroplated mild steel housing which contains an electronic sounder equipped with 32 user-selectable tones.
- Gas Group I, IIA, IIB
- Rated Voltage: 12-24VAC/DC | 110-220VAC

Ex db op is I Mb, Ex db I Mb, Ex db IIB + H2 T4 Gb
T4-135°C**Ex LED Beacon S3 Range**

Code	Description	Light Source	Duty Cycle	Voltage	IP Rating
BXVL*12	Banshee Ex LED Beacon	9W LED - 40 SMD 360°	Continuous Rated	12-24VAC/DC	IP65
BXVL*22	Banshee Ex LED Beacon	9W LED - 40 SMD 360°	Continuous Rated	110/220VAC	IP65

* Add Colour: ● **R** (Red), ● **A** (Amber), ● **G** (Green), ● **B** (Blue), ○ **C** (Clear)**Features**

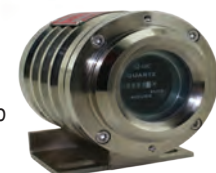
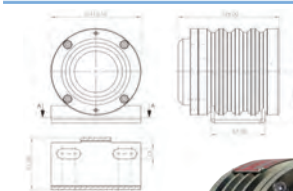
- Suitable for use in underground and surface mining vehicles and in areas that require an explosion-protected device. The unit consists of a flameproof enclosure, fitted with a toughened transparent glass lens, housing white, red and amber LEDs.
- Light Source: 3 High-Bright White LED's, 3 Red LED's, 1 Flashing Amber
- Zone 1, 2, 20, 21 and 22. Gas Group I, IIA, IIB, IIC, IIIA, IIIB, IIIC
- Rated Voltage: 12-24VAC/DC

Ex db op is I Mb, Ex db I Mb, Ex db IIB + H2 T4 Gb
T4-135°C**Ex Vehicle Light S3 Range**

Code	Description	Light Intensity	Duty Cycle	Voltage	IP Rating
BXDL124	Banshee Ex Vehicle Light	11 Watt 100Lux @ 10m	Continuous Rated	10-28VDC	IP54
BXDL12A	Banshee Ex Vehicle Light	11 Watt 100Lux @ 10m	Continuous Rated	10-28VAC/DC	IP54
HDLT24-15W	FLP Small Head Light	15 Watt 10Lux @ 20m	Continuous Rated	12/24VDC	IP65

Features

- Suitable for use in underground and surface mining vehicles and in areas that require an explosion-protected device. The unit consists of a flameproof enclosure, fitted with a toughened transparent glass lens, housing white, red and amber LEDs.
- Light Source: 3 High-Bright White LED's, 3 Red LED's, 1 Flashing Amber
- Zone 1 and 2, Gas Group I, IIA, IIB
- Rated Voltage: 12-24VAC/DC

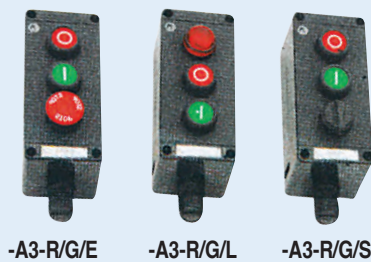
Ex db op is I Mb,
Ex db I Mb, Ex db IIB + H2 T4 Gb
T4-135°C**Ex Hour Meter S3 Range**

Code	Description	Current Consumption	Duty Cycle	Voltage	Size H x W	IP Rating
BXHM430	Banshee Ex Hour Meter	1A	Continuous Rated	4-30VAC/DC	126xØ112	IP54

Features

- Suitable for applications in underground and surface mining or areas where an explosion-protected device is necessary. The unit consists of an electroplated mild steel housing fitted with a clear polycarbonate lens, which houses forty high-bright LEDs, ensuring heightened visibility.
- Zone 1 and 2, Gas Group I, IIA, IIB
- Rated Voltage: 4 - 30VAC/DC

EXPLOSION PROOF CONTROL STATIONS IP65



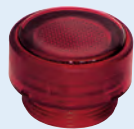
Code	Description	Gland Size	Enclosure Size H x W x D (mm)
BZA8050-K1	On/Off Selector Switch 1 x N/O (10A)	M25	107 x 85 x 87
BZA8050-A1-G	Start Pushbutton 1N/O	M25	107 x 85 x 87
BZA8050-A1-R	Stop Pushbutton 1 N/C	M25	107 x 85 x 87
BZA8050-A1-C	Emg. Stop Twist to release 1N/C	M25	107 x 85 x 87
BZA8050-A1-E	Emg. Stop Push-Pull 1N/C	M25	107 x 85 x 87
BZA8050-A2-C	Emg. Stop (Twist to release 1N/C) & Start Pushbutton 1N/O	M25	139 x 85 x 87
BZA8050-A2-R/G	Start/Stop 1N/O & 1N/C	M25	139 x 85 x 87
BZA8050-A3-R/G/L	Start/stop and LED pilot light c/w 1N/O + 1N/C per button	M25	185 x 85 x 87
BZA8050-A3-R/G/E	Start/stop and emergency stop (twist to release) c/w 1N/O + 1N/C per button	M25	185 x 85 x 87
BZA8050-A3-R/G/S	Start/stop & selector 2 position stay put switch c/w 1NO + 1NC per button	M25	185 x 85 x 87

Features

- Explosion Protection: Ex de IIC T6 Gb, Ex tb IIIC T80°C Db IP65
- Material: Glass fibre reinforced polyester
- Rated Working Voltage: 220VAC/380VAC
- Rated Working Current: 10A
- ATEX Classification Group II Category 2GD
- Suitable for Zone 1, 2 and 21, 22 locations

EXPLOSION PROOF PUSHBUTTONS & PILOT LIGHTS

Suitable for use in BZA8050 Control Stations



Colour	Pushbutton Flush	Pilot Light Head	Selector Switch	EMG-Stop Twist Release	EMG-Stop Push/Pull Button	On/Off Key Switch
Red ●	EX8050-R	EX8050-PLR	EX8050-SS	EX8050-EMG	EX8050-40093	EX8050-KS
Green ●	EX8050-G	EX8050-PLG				
Yellow ●	EX8050-Y	EX8050-PLY				
White ○	-	EX8050-PLW				

Contact Blocks



LED Lamp Blocks



Isolating Switch On/Off



* Add Colour to Code:

- G (Green), ● R (Red),
- W (White), ● Y (Yellow)

Description	Code	Description	Code	Description	Code
1N/O	EX8050-NO	24VAC	EX8050*-24VAC	2 Pole 10A	EX8050-2P
1N/C	EX8050-NC	110VAC	EX8050*-110VAC	4 Pole 10A	EX8050-4P
		230VAC	EX8050*-230VAC		



FLAMEPROOF ISOLATORS

Ex d e IICT6 Gb



Polyester Enclosed Isolators - Padlockable 8mm - Rated working voltage: 220VAC/380VAC

Code	Description	Entry	L x H x W - Size (mm)
BZZ8050-16/2	16A 2-Pole Isolator Padlockable	2 x M25	139 x 110 x 109
BZZ8050-16/3	16A 3-Pole Isolator Padlockable	2 x M25	139 x 110 x 109
BZZ8050-32/2	32A 2-Pole Isolator Padlockable	2 x M25	220 x 130 x 109
BZZ8050-32/3	32A 3-Pole Isolator Padlockable	2 x M25	220 x 130 x 109

- Material: Glass fibre reinforced polyester
- Suitable for Zones 1, 2
- Excluding Lock. For Locks, see ACDC Main Catalogue

Ex d IIB+Hz T6 Gb

Ex d I 150°C Mb

Zone 1, 2

Group I / IIB



ISO160

Steel Enclosed Isolators - Padlockable 8mm

Code	Description	Enclosure Size (mm) External (H x W x D)	Cable Entries
ISO80/1/20	20A 2-Pole Isolator	135 x 85 x 90	1 x Top & 1 x Bottom
ISO80/3/20	20A 3-Pole Isolator	135 x 85 x 90	1 x Top & 1 x Bottom
ISO80/3/40	40A 3-Pole Isolator	135 x 85 x 90	1 x Top & 1 x Bottom
ISO160/3/40	40A 3-Pole Isolator	188 x 145 x 120	2 x Bottom
ISO160/3/63	63A 3-Pole Isolator	188 x 145 x 120	2 x Bottom
ISO160/3/80	80A 3-Pole Isolator	188 x 145 x 120	2 x Bottom

- Excluding Lock. For Locks, see ACDC Main Catalogue • Other Configurations available on request

Note: Other combinations and specifications manufactured to your order.

Ex d I Mb T4

Ex d IIB+Hz Gb T4

Zone 1, 2 Group I



Steel Enclosed Isolators - Padlockable 8mm - Material 350WA - Silver Cadmium Plated

Code	Description	Size (mm) Ø x H	Weight	Cable Entries 20mm
RIS25/2P	25A 2-Pole Isolator	100 x 95	4.5kg	1 x Top & 1 x Bottom
RIS25/3P	25A 3-Pole Isolator	100 x 95	4.5kg	1 x Top & 1 x Bottom
RIS40/2P	40A 2-Pole Isolator	150 x 112	8.0kg	1 x Top & 1 x Bottom
RIS40/3P	40A 3-Pole Isolator	150 x 112	8.0kg	1 x Top & 1 x Bottom
RIS63/3P	63A 3-Pole Isolator	150 x 112	8.0kg	1 x Top & 1 x Bottom
RIS80/3P	80A 3-Pole Isolator	150 x 112	8.0kg	1 x Top & 1 x Bottom

- Excluding Lock. For Locks, see ACDC Main Catalogue • Other Configurations available on request

Note: Other combinations and specifications manufactured to your order.

FLAMEPROOF STARTERS

Ex d IIB+Hz T6 Gb

Ex d I 150°C Mb

Zone 1, 2 Group I / IIB



FDL25

Direct On Line Starter – No Terminal Box

AC3 kW		Overload Range	D.O.L. Code	*With Isolator	Enclosure Size (mm)	*Coil Voltage AC
400V	525V					
2.2	3	4 - 6A	FDL06 *	/S	180 x 145 x 120	U = 240V (170-280V)
4	5.5	7 - 10A	FDL09 *	/S	180 x 145 x 120	
5.5	7.5	9 - 13A	FDL12 *	/S	180 x 145 x 120	
7.5	10.5	12 - 18A	FDL18 *	/S	180 x 145 x 120	N = 415V (291-465V)
11	15	17 - 25A	FDL25 *	/S	180 x 145 x 120	
15	18.5	23 - 32A	FDL32 *	/S	180 x 145 x 120	
18.5	22	33 - 50A	FDL40 *	/S	180 x 145 x 120	SF = 550V (467-605V)
22	30	33 - 50A	FDL50 *	/S	180 x 145 x 120	
30	37	43 - 65A	FDL65 *	/S	180 x 145 x 120	
37	45	54 - 80A	FDL80 *	/S	180 x 145 x 120	
45	55	83 - 90A	FDL95 *	/S	180 x 145 x 120	

- Enclosure Size Codes: H x W x D (External)
- Note: Bigger and smaller starters can be manufactured on request
- 80kW and bigger starter dimensions: 245 x 170 x 150mm

Note: Other combinations and specifications manufactured to your order.

EXPLOSION PROOF SIRENS & BEACONS

Fulleon



Flameproof Sounders and Beacons

• Application: Class 1, 2 & 3 all groups. Division 1 and 2 areas

Code	Operating Voltage Range	Material	Max Current at Rated Voltage (A)	Min Sound at Rated Voltage (dB@1m)	IP Rating	Tone
DB5	24VDC	ABS	14mA	100	IP65	26 Tone
DB7	24VDC	Polyester	34mA	103	IP66	27 Tone
XB8	24VDC	Polyester	55mA	60F/M	IP66	Beacon

Manual Callpoint IP67

Code	Description
BG2	Switch Ratings: 0 to 30VDC – 5A (resistive) or 3A (inductive); 30 to 50VDC – 1A (resistive) or 3A (inductive); 0 to 254VAC – 5A (resistive) or 3A (inductive). Material: UV resistant glass reinforced polyester.

Auer Signal



Explosion Proof Signal Horn

Code	Operating Voltage	Material	Max Current at Rated Voltage (A)	Min Sound at Rated Voltage (dB@1m)	IP Rating	Tone
EXH 24VAC	24VAC	PC/ABS	450mA	105	IP55	Horn
EXH 115VAC	115VAC	PC/ABS	205mA	105	IP55	Horn
EXH 230VAC	230VAC	PC/ABS	70mA	105	IP66	Horn

LA SONORA s.n.c.



Flameproof Siren

Code	Operating Voltage	Material	Max Current at Rated Voltage (A)	Min Sound at Rated Voltage (dB@1m)	IP Rating	Tone
GR3T 24VAC	230VAC	Aluminium	70mA	110	IP55	Siren
GR3T 115VAC	115VAC	Aluminium	150mA	110	IP55	Siren
GR3T 24V	12-24VAC/DC	Aluminium	160mA	109	IP55	Siren

Above Sirens 100% continuous rated

Aluminium Explosion Proof Beacon IP66 Xenon Tube

Code	Colour	FPM	Connection
FHL113-A*	Amber	110	3/4 inch
FHL113-R*	Red	110	3/4 inch
FHL113-G*	Green	110	3/4 inch

*Add Voltage 24V (12-24VAC/DC), 110VAC, 230VAC

Spare PCB c/w Xenon Tube

Code	Description
113/FH-PCB	12/24VAC/DC P.C.B c/w Xenon Tube
113/FH-PCB 110V	110V P.C.B c/w Xenon Tube
113/FH-PCB 230V	230V P.C.B c/w Xenon Tube



113/FH-PCB 230V

E2S **2 Year Warranty**



Sounders Intrinsically safe zone 0, 1 & 2 Gas Group 11C

Code	Operating Voltage Range	Material	Max Current at Rated Voltage (A)	Min Sound at Rated Voltage (dB@1m)	IP Rating	Tone
E2SIS	24VDC	ABS Flame retardant UL94VO	25mA	100	IP65	49 Tone
E5YIS	24VDC	ABS Flame retardant UL94VO	93mA	105	IP66	32 Tone

Beacons

Code	Operating Voltage Range	Material	Max Current at Rated Voltage (A)	Min Sound at Rated Voltage (dB@1m)	IP Rating	Tone
E2BIS-*	24VDC	ABS Flame retardant UL94VO	25mA	–	IP65	Beacon

*Add colour: ●R (Red), ●A (Amber), ●G (Green), ●B (Blue)

Sounder/Beacons

Code	Operating Voltage Range	Material	Max Current at Rated Voltage (A)	Min Sound at Rated Voltage (dB@1m)	IP Rating	Tone
E25BIS-*	24VDC	ABS Flame retardant UL94VO	48mA	100	IP65	49 Tone

*Add colour: ●R (Red), ●A (Amber), ●G (Green), ●B (Blue)



2 Year Warranty



E2S Flameproof Manual Call Points



ECPG003



ECPP002



ECPT002

Code	Description	Duty Cycle	Voltage
ECPG003	EX Break Glass Call Point	Continuous Rated	24VDC
ECPG002	Call Point Spare Glass	-	-
ECPP002	EX Push Button Call Point	Continuous Rated	24VDC
ECPT002	EX Tool Reset Call Point	Continuous Rated	24VDC

Housing Material: Marine grade copper free LM6 Aluminium

FLAMEPROOF SIRENS & BEACONS IP67

EX11 Flameproof Sounders



EXS1012



EXS2012

Code	Description	Duty Cycle	Sound Output	Current Consumption	Tone
EXS1012	EX 11 Sounder 12VDC	Continuous Rated	110db	195mA	32 Tone
EXS1024	EX 11 Sounder 24VDC	Continuous Rated	110db	250mA	32 Tone
EXS1110	EX 11 Sounder 110VAC	Continuous Rated	110db	110mA	32 Tone
EXS1220	EX 11 Sounder 220VAC	Continuous Rated	110db	56mA	32 Tone

EX12 Flameproof Sounders

EXS2012	EX 12 Sounder 12VDC	Continuous Rated	120db	850mA	32 Tone
EXS2024	EX 12 Sounder 24VDC	Continuous Rated	120db	800mA	32 Tone
EXS2110	EX 12 Sounder 110VAC	Continuous Rated	120db	180mA	32 Tone
EXS2220	EX 12 Sounder 220VAC	Continuous Rated	120db	90mA	32 Tone

EX 05 Flameproof Beacons



EXB051



EXB101



EXB151

Code	Description	Duty Cycle	Light Source	Light Output
EXB051*	EX 05 Beacon 12VDC	Continuous Rated	Xenon Tube	5 Joule @ 1Hz
EXB052*	EX 05 Beacon 24VDC	Continuous Rated	Xenon Tube	5 Joule @ 1Hz
EXB053*	EX 05 Beacon 110VAC	Continuous Rated	Xenon Tube	5 Joule @ 1Hz
EXB054*	EX 05 Beacon 220VAC	Continuous Rated	Xenon Tube	5 Joule @ 1Hz

EX 10 Flameproof Beacons

EXB101*	EX 10 Beacon 12VDC	Continuous Rated	Xenon Tube	10 Joule @ 1Hz
EXB102*	EX 10 Beacon 24VDC	Continuous Rated	Xenon Tube	10 Joule @ 1Hz
EXB103*	EX 10 Beacon 110VAC	Continuous Rated	Xenon Tube	10 Joule @ 1Hz
EXB104*	EX 10 Beacon 220VAC	Continuous Rated	Xenon Tube	10 Joule @ 1Hz

EX 15 Flameproof Beacons

EXB151*	EX 15 Beacon 12VDC	Continuous Rated	Xenon Tube	15 Joule @ 1Hz
EXB152*	EX 15 Beacon 24VDC	Continuous Rated	Xenon Tube	15 Joule @ 1Hz
EXB153*	EX 15 Beacon 110VAC	Continuous Rated	Xenon Tube	15 Joule @ 1Hz
EXB154*	EX 15 Beacon 220VAC	Continuous Rated	Xenon Tube	15 Joule @ 1Hz

*Add colour: ●R (Red), ●A (Amber), ●G (Green), ●B (Blue)

EX 1105 Flameproof Beacons / Sounder Combo



EXC111

Code	Description	Duty Cycle	Sound Output	Current Consump.	Light Source	Light Output	Tone
EXC111*	EX 1105 Combo 12VDC	Continuous	110db	195mA	Xenon Tube	5 Joule @ 1Hz	32 Tone
EXC112*	EX 1105 Combo 24VDC	Continuous	110db	250mA	Xenon Tube	5 Joule @ 1Hz	32 Tone
EXC113*	EX 1105 Combo 110VAC	Continuous	110db	110mA	Xenon Tube	5 Joule @ 1Hz	32 Tone
EXB114*	EX 1105 Combo 220VAC	Continuous	110db	56mA	Xenon Tube	5 Joule @ 1Hz	32 Tone

*Add colour: ●R (Red), ●A (Amber), ●G (Green), ●B (Blue)

Flameproof Hand Operated Siren



Code	Frequency	Audible Range	dB @ 1m	Duty Cycle	IP Rating
H200CAGE	500Hz	2000m	120	100%	IP44

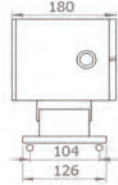
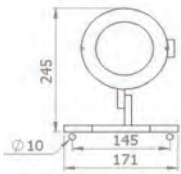
KAMA BANSHEE S1 RANGE - ZONE 1 & 2



5W, 7W



12V



S1 Range Flameproof Lights - IP65

Code	Description	LED Power	Light Output	Power mA	Cable Entry	Size (mm) H x W x L
S1-LFP-5W-* 12VDC	Banshee Ex Spotlight	5W	49 LUX @ 5m	28mA	1 x M20	195 x 171 x 166
S1-LFP-7W-* 12VDC	Banshee Ex Spotlight	7W	125 LUX @ 5m	20mA	1 x M20	195 x 171 x 166
S1-LFP-7W-* 230VAC	Banshee Ex Spotlight	7W	190 LUX @ 5m	72mA	1 x M20	195 x 171 x 166
S1-LFP-12W-* 12VDC	Banshee Ex Floodlight	12W	125 LUX @ 5m	97mA	1 x M20	245 x 171 x 180
S1-LFP-12W-* 230VAC	Banshee Ex Floodlight	12W	190 LUX @ 5m	111mA	1 x M20	245 x 171 x 180

*Add colour: ● R (Red), ● A (Amber), ● G (Green), ○ C (Clear)

Features

- Suitable for use in fiery mines, petro chemical plants, underground coal mining machinery and areas where an explosion-protected device is required. The unit consists of a stainless steel body with a M20 cable entry, a stainless steel protective cage and a unique screw on flange for cable connection.
- Gas Group: I, IIA, IIB, IIC, IIIA, IIIB, IIIC
- Ex db I Mb, Ex db IIC T4 Gb, Ex ta IIIC T110°C Da IP65



EP500

Mono & Duplo



EP1500



EP2000

S1 Range Flameproof Motorised Sirens - IP65

Code	Operating Voltage Range	Frequency (Hz)	Max Current at Rated Voltage (A)	Audible Range	Min Sound at Rated Voltage (dB@1m)
EP500*	110VAC	1200	2A	1000m	113 - Ex Duplo
EP500*	230VAC	1200	1A	1000m	113 - Ex Duplo
EP500†	12VAC/DC	1200	9A	1000m	113 - Ex Mono
EP500†	24VAC/DC	1200	4.8A	1000m	113 - Ex Mono
EP1500	110VAC	1600	2.6A	1500m	122
EP1500	230VAC	1600	2.1A	1500m	122
EP2000	110VAC	370/660	4.0A	2000m	128
EP2000	230VAC	370/660	3.0A	2000m	128

* Application: Class 1, 2 & 3 all groups. Division 1 & 2 areas
 † Duty Cycle 1min on, 8min off | * Duty Cycle - Continuous

Duty Cycle 30min on, 10min off

Flameproof Electronic Sounder - IP65



EXS Multi Sounder

Code	Description	Sound Output @1m
EXS*	Flameproof Multi Sounder	93-113dB

*Add Voltage to Code: 12VDC, 24VDC, 115VAC, 230VAC

Features

- Maintenance free solid state sounder
- Four sounds from one unit for different applications
- High sound output with volume control
- Application: Class 1, 2 & 3 all groups. Division 1 and 2 areas

Flameproof Beacon - IP65 - Xenon Strobe

Code	Description	Colour	FPM	Light
EXF-A*	Flameproof Beacon	● Amber	110	Xenon Tube
EXF-B*	Flameproof Beacon	● Blue	110	Xenon Tube
EXF-G*	Flameproof Beacon	● Green	110	Xenon Tube
EXF-R*	Flameproof Beacon	● Red	110	Xenon Tube

Flameproof Beacon - IP65 - LED Type

Code	Description	Colour	FPM	Light
EXFL-A*	Flameproof Beacon	● Amber	110	LED
EXFL-B*	Flameproof Beacon	● Blue	110	LED
EXFL-G*	Flameproof Beacon	● Green	110	LED
EXFL-R*	Flameproof Beacon	● Red	110	LED

*Add Voltage to Code: 12VDC, 24VDC, 110VAC, 230VAC

Features

- High quality steel casting, precision engineered
- Rugged multipurpose weatherproof device
- Application: Class 1, 2 & 3, all groups. Division 1 and 2 areas



EXF

Xenon & LED



EXFL



**2 Year
Warranty**



KAMA BANSHEE S1 RANGE - ZONE 1 & 2

BANSHEE

Multi Sounder & Beacon



Colours

EXCX*



Flameproof Beacon and Sounder Combination - IP65 - Xenon Strobe

Code	Description	Colour	FPM	Light
EXCX-A*	Flameproof Sounder and Beacon	Amber	110	Xenon Tube
EXCX-B*	Flameproof Sounder and Beacon	Blue	110	Xenon Tube
EXCX-G*	Flameproof Sounder and Beacon	Green	110	Xenon Tube
EXCX-R*	Flameproof Sounder and Beacon	Red	110	Xenon Tube

Flameproof Beacon and Sounder Combination - IP65 - LED Type

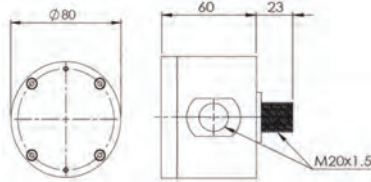
Code	Description	Colour	FPM	Light
EXCL-A*	Flameproof Sounder and Beacon	Amber	110	LED
EXCL-G*	Flameproof Sounder and Beacon	Green	110	LED
EXCL-R*	Flameproof Sounder and Beacon	Red	110	LED

*Add Voltage to Code: 12VDC, 24VDC, 115VAC, 230VAC

Features

- Suitable for use in fiery mines as well as petro chemical plants and areas where an explosion protected device is required. The unit consists of 304 Type Stainless Steel housing.
- Ex db IIC T6 Gb, Ex tb IIIC T85°C Db IP65
- Gas Group: IIA, IIB, IIC, IIIA, IIIB, IIIC

EX Terminal Box for S1 Lights - IP65 - Optional for S1 Spotlight



TBOX-S1

Code	Description
TBOX-S1	Banshee EX Terminal Box

Features

- The EX Terminal box can be used in most ex environments for flameproof wiring terminations. The unit is made of 304 type stainless steel.
- Ex d I 150°C Mb, Ex d IIC T4 Gb
- Gas Group: I, IIA, IIB, IIC

VEHICLE & WARNING LIGHTING

3-in-1 Sirencos Loco Light IP65		Sirencos IS Portable Beacon IP67	
	<p>Standard: Red (Static) White (Static)</p> <p>Optional: Green (Static) Amber (Flashing)</p>		
Code	SLLL-024*	Code	SF1EF1*
Supply Voltage	12-24VDC	Battery Voltage	3.7V Li-Ion
Light Source	3 High-bright White LED's (Driver Visibility), 3 Red LED's (Rear Indication), 1 Flashing Amber or Static Green. 20° Beam Angle	Classification	EX ia I 150°C MA
Power (White)	11 Watt (53 Lux @ 10m)	Certification	SAEx M/11-370X
		Dimensions (mm)	110 x 110 x 80
*Add configuration to code: ● GR (Green - Static + Red & White Static) ● A (Amber - Flashing + Red & White Static)		*Add colour to code: ● GR (Green), ● A (Amber), ○ WH (White), ● B (Blue), ● R (Red), ● Y (Yellow) Complete with Magnetic Base	

Heavy Duty Vehicle Lights

	6500K 450lm	4500K 680lm		Thread Size: 25mm	4500K NEW
Code	EHL-4LED	EHL-6LED	EHL-FEL*	EHL-STB*	SVLL124
Description	4 x 3W LED Lamp	6 x 3W LED Loco Lamp	Round LED Marker Lamp	Strobe Light	4 x 3W LED Lamp
Voltage	12 - 36VDC	12 - 36VDC	12 - 36VDC	12 - 36VDC	12 - 36VDC
Power	9W	12W	4.2W	7.6W	12W
Size (mm)	Ø70 x 80H	Ø150 x 60H	Ø70 x 80H	Ø90 x 70H	Ø79 x 80H

*Add colour to code: ● R (Red), ● GR (Green), ● B (Blue), ● A (Amber - For EHL-FEL-Range Only)

EXPLOSION PROOF LIGHTING



Flameproof Area Flasher with Battery Backup - 12VDC

Code	Description	Watts	Cable Entry	Size (mm) Ø x H
S2-FLP-R12VDC	Red Flasher Unit 12VDC c/w Battery Backup	20W	3 x M20	152 x 171

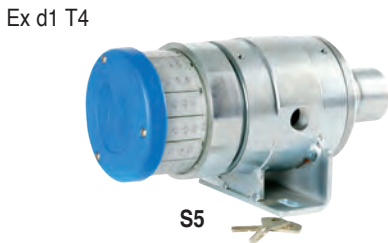
215mm max OD with Foot & Push Button



Flameproof Flasher / Siren Combo - 8 different settings, flashings, 3 speed rotating, 4 strobe settings

Code	Description	Watts	Size (mm) Ø x H
S3-CFLP-R*	Red Flasher/Siren Combo Flameproof	7.5W / 10W	140 x 259.5
S3-CFLP-BL*	Blue Flasher/Siren Combo Flameproof	7.5W / 10W	140 x 259.5
S3-CFLP-GN*	Green Flasher/Siren Combo Flameproof	7.5W / 10W	140 x 259.5
S4-SFLP*	Flameproof Siren Only 95dB		140 x 259.5

*Add voltage to code: **24** for (24/12VDC), **220** for (110/220VAC)



Flameproof Flashers with Keyswitch - c/w keyswitch body, lock & keys

Code	Description	Watts	Size (mm) H x L
S5-KFLP-R*	Flasher Unit with Keyswitch Red	7.5W / 10W	140 x 252
S5-KFLP-GN*	Flasher Unit with Keyswitch Green	7.5W / 10W	140 x 252
S5-KFLP-BL*	Flasher Unit with Keyswitch Blue	7.5W / 10W	140 x 252

*Add voltage to code: **24** for (24/12VDC), **220** for (110/220VAC)



Flameproof Flasher Units - 160mm Max OD with Foot

Code	Description	Watts	Size (mm) Ø x L
S6-FLP-R*	Red Flasher Units	7.5W / 10W	128 x 120
S6-FLP-BL*	Blue Flasher Units	7.5W / 10W	128 x 120
S6-FLP-GN*	Green Flasher Units	7.5W / 10W	128 x 120
S6-FLP-WH*	White Flasher Units	7.5W / 10W	128 x 120

*Add voltage to code: **24** for (24/12VDC), **220** for (110/220VAC)

Flameproof Timer Light - 160mm Max OD with Foot

Code	Description	Watts	Size (mm) Ø x L
S7-TFP-R-24	Flameproof resin timer light Red 12/24VDC	7.5W	128 x 120
S7-TFP-A-24	Flameproof resin timer light Amber 12/24VDC	7.5W	128 x 120
S7-TFP-GN-24	Flameproof resin timer light Green 12/24VDC	7.5W	128 x 120

LED EXPLOSION PROOF BEACONS IP65

Beacon / Sounder - ≥80dB

II 2G Exd [ib] ib II CT6



Beacon

II 2G Exd II CT6



Code	Colour	Code	Colour
BBJ-ZG*	● Green	BJD-ZG*	● Green
BBJ-ZR*	● Red	BJD-ZR*	● Red
BBJ-ZY*	● Yellow	BJD-ZY*	● Yellow
BBJ-ZB*	● Blue	BJD-ZB*	● Blue

*Add voltage to code: **110VAC**, **230VAC**

- LED lamp, low energy consumption, long service life
- IP-Rating **IP66**
- Flash frequency: 150/min
- Cable entry c/w cable seal-ring and locking device

- Suitable for use in Zones 1, 2, 21 & 22
- Glass cover resistant to temperature changes
- Enclosure in copper-free aluminium alloy, powder coated surface, yellow (RAL1021)
- Operating Temperature: -40 - +55°C



COMMUNICATION EQUIPMENT

Robust Telephones



Zenith



Ratel

Explosion Proof

Ex d I/II B + H₂ T6/
Ex m e [ia] I/II C T6



Phoenix

ABS Weatherproof IP54



I430-ICE



I448

Code	Z500	A120	A131
Rating	IP65	Weatherproof	Double Protection
Size (HxWxD)	260 x 120 x 100mm	230 x 140 x 110mm	280 x 15 x 140mm
Housing	ABS	M/Steel Powder Coated	Gun Metal Brass
Weight	1Kg	2.5Kg	9Kg

Automatic analogue industrial/mining telephone compatible with all 24V/48V PABX systems, pulse/tone switchable. Ring signal 45V-90VAC 17Hz-50Hz

Code	I430-ICE
Size: 310 x 220 x 130. Single Telephone Cable Pair, 2-80 telephone. Line Voltage: 48VDC. Distance: 10-12km. Max 80 phones per power supply.	

Code	I448
110/230-48VDC Power supply to be ordered separately with 48hr battery back up included	

Telephone Booths



Acoustic



Non Acoustic

Code	ATB100	TB100
Size (HxWxD)	670 x 500 x 450mm	670 x 450 x 500mm
Housing	Fibreglass	Polypropylene
Weight	7.5Kg	5Kg

Telephone Extension Light/Siren

Phone Ringer. For standard 2 wire analogue phones only.

SSLU
Weatherproof IP65
340 x 140 x 120
ABS
3Kg

- Operates in sympathy with the telephone ring signal.
- Powered by 110 or 220VAC
- Siren 116db o/p.
- Light 8 x super bright LED.



Light & Siren Unit

PAGE TELEPHONES



P300NHT



P300

Page Telephones

Code	P300	P300NHT
Handset	No	Yes
Rating	Weatherproof IP65	Weatherproof IP65
Size (HxWxD)	310 x 140 x 120mm	310 x 140 x 120mm
Housing	ABS	ABS
Weight	3kg	3.5kg

- 2-50 telephones connect in parallel with twisted telephone cable pair
- Operates on 230VAC/ 110VAC
- Central 12V PSU option available
- Simplex, open voice comms at 2 watt output

EX HOWL CALL TELEPHONE BOOTHS

Ex Howl Telephones - without power supply.

Sound-powered telephone systems for use in rough conditions, including areas with explosive atmospheres and fire-damp.

Code	Description
5069	Howl-Call Telephone without snap-in plug

Application - If you want or need to telephone in areas where this is normally not possible, you need a sound-powered telephone system. Operation without external power supply and complex equipment, sound-powered telephones are ideal for communications whenever there is no power supply available, e.g. at blast furnaces, in tunnelling or mining, or offshore on oil rigs or high-sea steamers, and provide a direct connection to the switchboard, base, bridge or colleagues on the surface or wherever. This surprisingly easy, but effective method is already used widely to call for material, report faults or save lives.



VICTOR PLUGS & SOCKETS 650/1100VAC

Flameproof 250Amp 4 Pin Screw Type Plugs

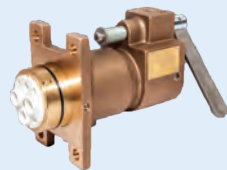


Non-Flameproof 250Amp 4 Pin Screw Type Plugs



Code	Description	Cable Size	Cable Type	Code	Description	Cable Size	Cable Type
Z100001/101	Flameproof Plug	4mm ²	41	Z7100001/101	Non-Flameproof Plug	4mm ²	41
Z100001/102	Flameproof Plug	6mm ²	41	Z7100001/102	Non-Flameproof Plug	6mm ²	41
Z100001/104	Flameproof Plug	16mm ²	41	Z7100001/104	Non-Flameproof Plug	16mm ²	41
Z100001/114	Flameproof Plug	16mm ²	61A	Z7100001/114	Non-Flameproof Plug	16mm ²	61A
Z100001/115	Flameproof Plug	25mm ²	61A	Z7100001/115	Non-Flameproof Plug	25mm ²	61A
Z100001/116	Flameproof Plug	35mm ²	61A	Z7100001/116	Non-Flameproof Plug	35mm ²	61A
Z100001/117	Flameproof Plug	50mm ²	61A	Z7100001/117	Non-Flameproof Plug	50mm ²	61A
Z100001/118	Flameproof Plug	70mm ²	61A	Z7100001/118	Non-Flameproof Plug	70mm ²	61A

Flameproof 250Amp 4 Pin Screw Type Sockets



Non-Flameproof 250Amp 4 Pin Screw Type Sockets



Code	Description	Cable Size	Cable Type	Code	Description	Cable Size	Cable Type
Z100002/101	Flameproof Socket	4mm ²	41	Z710002/101	Non-Flameproof Socket	4mm ²	41
Z100002/102	Flameproof Socket	6mm ²	41	Z710002/102	Non-Flameproof Socket	6mm ²	41
Z100002/104	Flameproof Socket	16mm ²	41	Z710002/104	Non-Flameproof Socket	16mm ²	41
Z100002/114	Flameproof Socket	16mm ²	61A	Z710002/115	Non-Flameproof Socket	25mm ²	61A
Z100002/115	Flameproof Socket	25mm ²	61A	Z710002/116	Non-Flameproof Socket	35mm ²	61A
Z100002/116	Flameproof Socket	35mm ²	61A	Z710002/117	Non-Flameproof Socket	50mm ²	61A
Z100002/117	Flameproof Socket	50mm ²	61A	Z710002/118	Non-Flameproof Socket	70mm ²	61A
Z100002/118	Flameproof Socket	70mm ²	61A				

EXPLOSION PROOF ANALOGUE ULTRASONIC LEVEL DETECTION

Dinel[®]

For continuous no-contact level measurement of various liquid and bulk solid materials in closed or open vessels, sumps, reservoirs etc.



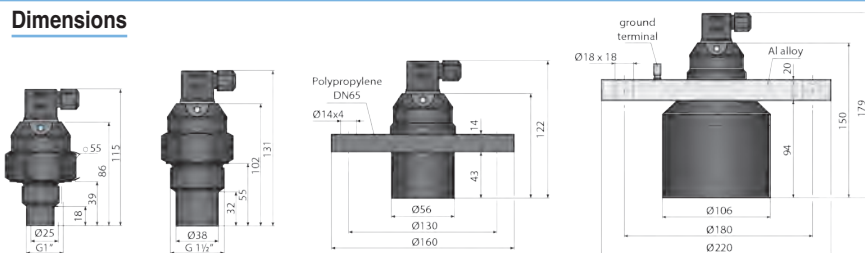
Sensing Distance

Output Type	0,2 - 2m	0,25 - 6m	0,4 - 10m	0,5 - 20m
-------------	----------	-----------	-----------	-----------

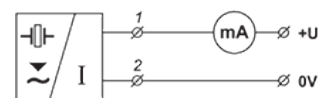
Explosionproof Field Adjustable Type - Must be used with IRU-420 (Below) c/w Connector Socket

	ULM-53XI-02-I	ULM-53XI-06-I	ULM-53XI-10-I	ULM-53XI-20-I
4 - 20mA (2-Wire)				
EX Rating	Ex II 1/2G Ex ia IIB T5 Ga/Gb	Ex II 1/2G Ex ia IIB T5 Ga/Gb	Ex II 1/2G Ex ia IIA T5 Ga/Gb	Ex II 2G Ex ia IIA T5 Gb
Mounting Type	G1"	G1½"	Polypropylene	Aluminium Alloy Flange
Supply Voltage	18 - 36VDC (18 - 30VDC For XI Versions)			
Accuracy	0.20%			
Ambient Temperature	-30° to 70°C		-30° to 60°C	

Dimensions



Wiring Diagram



Isolating Repeater - for use with ULM-53XD1

Code	IRU-420-I-*	IRU-420-H-*	IRU-420-U-*
Input Signal	0/4 - 20mA	4 - 20mA	4 - 20mA
Output Signal	0/4 - 20mA	4 - 20mA	0 - 10V
Bi-directional Trans	NO	YES	NO
Communication signal HART™			

*Add Voltage to Code: 24V (18-30VAC/18-40VDC) 230V (60-230VAC/85-230VDC)

Ex II(1)G[EEEx ia] IIB / IIC Ex I(M1)G[EEEx ia]

HAZARDOUS AREA GUIDE for ATEX & IECEx (Zones/Groups)

Typical Equipment Marking for Gas Atmospheres

2014/34/EU ATEX Directive Marking				EN/IEC 60079-0 General Requirements Marking			
CE	2503	Ex	II 2G	Ex d	IIB	T4	Gb
European Union compliance mark	I.D. Number of Notified Body responsible for surveillance	ATEX Symbol	Equipment Marker (ATEX Only)	Type of Protection	Gas Group	Temperature Class	Equipment Protection Level (EPL)

Typical Equipment Marking for Dust Atmospheres

2014/34/EU ATEX Directive Marking				EN/IEC 60079-0 General Requirements Marking			
CE	2503	Ex	II 2D	Ex tb	IIIC	T135°C	Db
European Union compliance mark	I.D. Number of Notified Body responsible for surveillance	ATEX Symbol	Equipment Marker (ATEX Only)	Type of Protection	Dust Group	Temperature Class	Equipment Protection Level (EPL)

Gas Zones

Gas Zones	Description	ATEX Category	EPL	Required Protection
Methane	Mines with methane and dust. Equipment remains energised in explosive atmosphere	M1	Ma	Two Faults
Methane	Mines with methane and dust. Equipment is de-energised in explosive atmosphere	M2	Mb	Severe Normal Operation
Zone 0	Explosive atmosphere present continuously or for long periods, frequently	1G	Ga	Two Faults
Zone 1	Explosive atmosphere is likely to occur under normal conditions, occasionally	2G	Gb	One Fault
Zone 2	Explosive atmosphere is unlikely to occur under normal conditions, short periods	3G	Gc	Normal Operation

Dust Zones

Dust Zones	Description	ATEX Category	EPL	Required Protection
Zone 20	Explosive atmosphere present continuously or for long periods, frequently	1D	Da	Two Faults
Zone 21	Explosive atmosphere is likely to occur under normal conditions, occasionally	2D	Db	Two Faults
Zone 22	Explosive atmosphere is unlikely to occur under normal conditions, short periods	3D	Dc	Normal Operation

Suitable for Zone 0, 1 & 2

ATEX Group & Category: **II 1G**

IECEx Equipment Protection Level: **Ga**

Types of protection (electrical): **ia, da, ma, op is**

Types of protection (non-electrical, ATEX): **c, b, k**

Types of protection (non-electrical, IECEx): **h**

Suitable for Zone 1 & 2

ATEX Group & Category: **II 2G**

IECEx Equipment Protection Level: **Gb**

Types of protection (electrical): **db, eb, ib, mb, ob, pxb,**

pyb, qb, op is, op pr, op sh

Types of protection (non-electrical, ATEX): **d, c, b, p, k, h**

Types of protection (non-electrical, IECEx): **d, p, h**

Suitable for Zone 2 only

ATEX Group & Category: **II 3G**

IECEx Equipment Protection Level: **Gc**

Types of protection (electrical): **dc, ec, ic, mc, nA, nC, nR, oc, pzc, qc**

Types of protection (non-electrical, ATEX): **fr, d, c, b, p, k, h**

Types of protection (non-electrical, IECEx): **fr, d, p, h**

Suitable for Zone 20, 21 & 22

ATEX Group & Category: **II 1D**

IECEx Equipment Protection Level: **Da**

Types of protection (electrical): **ta, ia**

Types of protection (non-electrical, ATEX): **c, b, k, h**

Types of protection (non-electrical, IECEx): **fr, d, p, h**

Suitable for Zone 21 & 22

ATEX Group & Category: **II 2D**

IECEx Equipment Protection Level: **Db**

Types of protection (electrical): **tb, ib, mb**

Types of protection (non-electrical, ATEX): **d, c, b, p, k, h**

Types of protection (non-electrical, IECEx): **d, h**

Suitable for Zone 22 only

ATEX Group & Category: **II 3D**

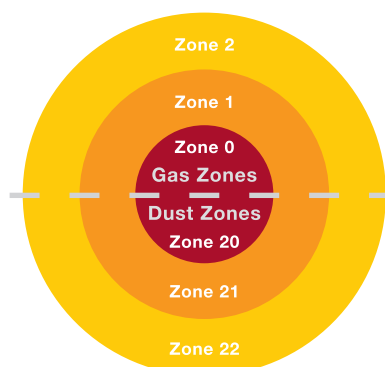
IECEx Equipment Protection Level: **Dc**

Types of protection (electrical): **tc, ic, mc**

Types of protection (non-electrical, ATEX): **fr, d, c, b, p, k, h**

Types of protection (non-electrical, IECEx): **h**

Zones of Use Explosive Atmospheres



HAZARDOUS AREA GUIDE for ATEX & IECEx (Zones/Groups)

Enclosure Ingress Protection (IP) Level: To EN/IEC 60529

First Number (Solid objects / dust)	Second Number (Water)
0 No protection	0 No protection
1 Objects > Ø50 mm	1 Vertically dripping water
2 Objects > Ø12.5 mm	2 Vertically dripping water with enclosure tilted by 15°
3 Objects > Ø2.5 mm	3 Sprayed water up to 60° from the vertical
4 Objects > Ø1.0 mm	4 Sprayed water from all directions
5 Dust protected	5 Water jets
6 Dust tight	6 Powered water jets 7 Temporary submersion < 1m depth

Gas Groups

Gases are classified according to the ignitability of the gas/air mixture as defined in EN/IEC 60079-20-1	
IIA	Acetic Acid, Acetone, Ammonia, Butane, Cyclohexane, Propane, Gasoline (petrol), Methane (natural gas, non-mining), Toluene, Xylene. Methanol (methyl alcohol), Propane-2-ol (iso-propyl alcohol)
IIB	Group IIA gases plus, Di-ethyl ether, Ethylene, Ethanol, Methyl ethyl ketone (MEK), Propane-1-ol (n-propyl alcohol)
IIC	Group IIA and IIB gases plus, Acetylene, Hydrogen

Dust Groups

Dusts are classified by the types of material that make up the dust	
IIIA	Combustible Fibres and Flyings
IIIB	Group IIIA dusts plus, Non-Conductive Dusts
IIIC	Group IIIA and IIIB dusts plus, Conductive Dusts

Equipment Groups

Group	Description
Group I	Electrical equipment intended for use in mines susceptible to fire damp
Group II	Electrical equipment intended for use in explosive gas atmospheres
Group III	Electrical equipment intended for use in explosive dust atmospheres

Ambient Temperature Range (Tamb)

Tamb = Temperature relating to the immediate surroundings of the equipment (assumed to be -20°C to +40°C, unless stated)

Protection Concepts

Type of Protection (electrical - gas)	Reference
General Requirements	EN/IEC 60079-0
Flameproof - Ex d / da / db / dc	EN/IEC 60079-1
Purge/Pressurised - Ex p / pxb / pyb / pzc	IEC 60079-2
Quartz/Sand Filled - Ex q / qb / qc	EN/IEC 60079-5
Oil Immersion - Ex o / ob / oc	EN/IEC 60079-6
Increased Safety - Ex e / eb / ec	EN/IEC 60079-7
Intrinsic Safety - Ex i / ia / ib / ic	EN/IEC 60079-11
Non Sparking - Ex nA / nC / nL	EN/IEC 60079-15
Encapsulation - Ex m / ma / mb / mc	EN/IEC 60079-18
Optical Radiation - Ex op is / op sh / op pr	EN/IEC 60079-28
Trace Heating Systems - Ex e / Ex 60079-30-1	EN/IEC 60079-30-1
Special Protection Ex s	EN/IEC 60079-33
Caplights	EN/IEC 60079-35-1
Controlled Spark Duration Power - i	TS 60079-39
Process Sealing	TS 60079-40
Flame Arresters	EN 16852
Diesel Engines	EN 1834-1,2,3

Type of Protection (electrical - dust)	Reference
General Requirements	EN/IEC 60079-0
Enclosure - ta / tb / tc	EN/IEC 60079-31
Purge/Pressurised - Ex p / pxb / pyb / pzc	EN/IEC 60079-2
Intrinsic Safety - Ex i / ia / ib / ic	EN/IEC 60079-11
Encapsulation - Ex m / ma / mb / mc	EN/IEC 60079-18

Type of Protection (non-electrical) (gas & dust)	Reference (ATEX only)	IECEx
General Requirements	EN 80079-36	IEC / ISO 80079-36
Flow Restricting Enclosure - fr	EN 13463-2	-
Flameproof - d	EN 13463-3	-
Constructional Safety - c / h	EN 80079-37	IEC / ISO 80079-37
Control of Ignition - b / h	EN 80079-37	IEC / ISO 80079-37
Pressurisation - p	EN 60079-2	-
Liquid Immersion - k / h	EN 80079-37	IEC / ISO 80079-37

Temperature Class (T Class)

Highest temperature achieved under the most adverse equipment rating and heating conditions. Flashpoint temperature of some gases)

T1: 450°C	Ammonia (630°C), Hydrogen (560°C), Methane (537°C), Propane (470°C)
T2: 300°C	Ethylene (425°C), Butane (372°C), Acetylene (305°C)
T3: 200°C	Cyclohexane (259°C), Kerosene (210°C)
T4: 135°C	Di-ethyl Ether (160°C)
T5: 100°C	-
T6: 85°C	Carbon Disulphate (95°C)

TECHNICAL INFORMATION

Standard F.L.C. data for 4 Pole motors

Rated Power		Standard 3-Phase 4 pole motors Line Connected				Phase Connected (Star-Delta)*		Single Phase Motors
kW	Hp	380V A	400V A	550V A	1000V A	380V A	400V A	230V A
0.37	0.5	1	1	0.72	0.4	-	-	3.4
0.55	0.75	1.6	1.5	1.16	0.64	-	-	4.6
0.75	1	2	1.9	1.4	0.75	-	-	5.8
1.1	1.5	2.6	2.5	1.9	1	-	-	8.4
1.5	2	3.5	3.3	2.5	1.3	-	-	11.2
2.2	3	5	4.7	3.6	1.9	-	-	16.4
3	4	6.6	6.3	4.8	2.5	-	-	21
4	5.5	8.5	8.1	6.2	3.3	4.9	4.7	28
5.5	7.5	11.5	10.9	8.6	4.5	6.7	6.3	37
7.5	10	15.5	14.7	11.5	6	9	8.5	-
10	13.5	20	19	14.3	7.5	11.6	11	-
11	15	22	21	16	8.7	12.8	12	-
15	20	30	28.5	22	12	17.4	16.6	-
18.5	25	37	35	27	14.3	21	20	-
22	30	44	42	32	17	25	24	-
30	40	60	57	43	23	35	33	-
37	50	72.5	69	53	28	42	40	-
45	60	85	81	62	33	49	47	-
55	75	105	100	76	40	64	61	-
75	100	138	131	100	53	79	75	-
90	125	170	161	123	65	99	94	-
110	150	205	195	152	78	119	113	-
132	175	245	233	179	91	142	135	-
160	220	300	285	218	117	174	165	-
200	270	370	351	268	149	215	204	-
220	300	408	388	296	161	237	225	-
250	350	475	451	344	200	275	262	-
315	430	584	555	422	240	339	322	-
355	480	636	604	477	265	369	350	-
375	500	670	636	503	278	389	369	-
425	580	760	722	548	303	441	419	-

* These are the values of F.L.C. as seen by the overload and main/delta contactors when phase connected within a Star-Delta starter.

Note: Always check the rating plate of the motor when commissioning *before* switching on.

Cable ratings

3 & 4 Core copper PVC/SWA/PVC 600/1000V cables - SABS 1507/1990

Cable Size (mm ²)	Electrical Properties				Gland Size Type ACG		
	Current Ratings		Volt Drop (mV/A/m)	3 Core			
	Ground A	Ducts A			Air A		
1.5	23	18	18	25.080	0	0	0
2.5	30	24	24	15.363	0	0/1	2
4	38	31	32	9.561	1	1	2
6	48	39	40	6.391	1	2	3
10	64	52	54	3.793	2	2	
16	82	67	72	2.390	2	2/3	
25	126	101	113	1.515	3	3	
35	147	120	136	1.097	3	3/4	
50	176	144	167	0.817	4	4	
70	215	175	207	0.576	4	4/5	
95	257	210	253	0.427	4/5	5	
120	292	239	293	0.348	5	5/6	
150	328	369	336	0.294	5	6	
185	369	303	384	0.250	6	6	
240	422	348	447	0.211	6	7	
300	472	397	509	0.189	6/7	7	

Borehole pump motor F.L.C. data

100mm submersible motors

kW	F.L.C.	
	230V Amps	400V Amps
0.25	3.1	-
0.37	3.9	1.3
0.56	5.0	1.6
0.75	6.0	2.2
1.12	8.8	3.0
1.50	11.8	3.9
2.20	17.0	5.9
3	-	7.2
4	-	9.3
5.5	-	13.2

Note:

Always check the rating plate of the motor when commissioning *before* switching on. Borehole pumps and motors require specialised protection. For a wide range of protection devices as well as special borehole control panels, see Main Catalogue.

Leading manufacturer, importer, and distributor of high-quality electrical and solar products tailored for both industrial and residential sectors. With an extensive network of distributors and franchises spanning across South Africa, we ensure superior service and widespread availability of our products, that meets the highest standards of performance and innovation.

LONGMEADOW

26 Nguni Drive
Longmeadow Business
Estate West, Edenvale
Gauteng

010 202 3300

info@acdc.co.za

GERMISTON

Sharland Street
Driehoek
Germiston
Gauteng

011 418 9600

germiston@acdc.co.za

RIVERHORSE

6 Riverhorse Close
Riverhorse
Valley Business Estate
Durban

031 492 4800

rvh@acdc.co.za

PINETOWN

Unit 10
Pine Industrial Estate
Pineside Road
New Germany

031 700 4215

kzn@acdc.co.za

CAPE TOWN

3(b) Richmond Southern
Close, Lenie Adams Ave
Richmond Park

021 492 2000

cape@acdc.co.za

National Sales Centre: **010 202 3400** | Technical: **010 202 3500** | Solar Hotline: **010 045 8002**



www.acdc.co.za



AC/DC SFC FLAMEPROOF



5th Edition September 2024

Note that specifications may undergo updates without prior notification in this publication. © ACDC Dynamics



THINK ELECTRICAL